

ergonic<sup>®</sup>  
inside 3



Ergonic<sup>®</sup> 3 – Modern concrete pumping:  
Precise, intuitive and reliable!

User-friendliness made by Putzmeister

**Non-CE Version**  
non EWR, no CE marking



Ergonic® 3 – highlights

# JUST AS EASY TO HANDLE AS ALWAYS – AND MORE INTUITIVE THAN EVER BEFORE **ERGONIC® 3**

The new Ergonic® 3 –  
clear, fast and safe

- # **Continuous operating concept** for all Putzmeister products with the same functions and displays – whether on the radio remote control or the Ergonic Graphic Display (EGD).
- # **Intuitive work and quick reactions** thanks to a clear menu structure and intuitively arranged functions.
- # **Full overview** of machine status on the radio remote control and EGD (incl. valves, sensors, LEDs on fuses).
- # **Detailed fault management:** Faults are easy to detect and rectify – even without a Putzmeister technician.
- # **Multi-level emergency operation** keeps the machine running even in the toughest conditions and in virtually every case.

ergonic®  
inside 3

## The best of two worlds

Ergonic® 3 is the logical evolution of Ergonic® 1 and Ergonic® 2.

Proven features are maintained, others developed further and additional, new and future-oriented functions are integrated.

The result has many benefits:

- # Experienced Putzmeister customers quickly become familiar with operation, making the switch incredibly easy.
- # New customers will need little training or instructions since operation is so intuitive.
- # Once learned, a wide variety of machine models can be operated.

## Pumping made smart

If our concrete pumps form the heart of Putzmeister machines, then the Ergonic® 3 system is the brain.

As a switching centre, the micro-processor-supported control systems regulate the functions of concrete pumps, mixers and placing booms.

## Always by your side – Ergonic® inside

- # **EBC – Ergonic Boom Control** Controls and regulates the movement of the placing booms, ensuring an increased placement rate and simple and safe operation.
- # **EPS – Ergonic Pump System** Takes over control of the concrete pump for all-round optimised pumping.
- # **EOC – Ergonic Output Control** Regulates the optimum motor speed, ensuring that the concrete pump operates smoothly with fuel efficiency and low wear.
- # **ESC – Ergonic Setup Control** The safety system regulates the interaction between the flexible support and working areas.
- # **EMC – Ergonic Mixer Control** Operates the mixer drum by radio remote control, including adding water and cleaning.

## # SIMPLE OPERATION

Intuitive and almost self-explanatory, including for less experienced machine operators

## # RELIABLE OPERATION

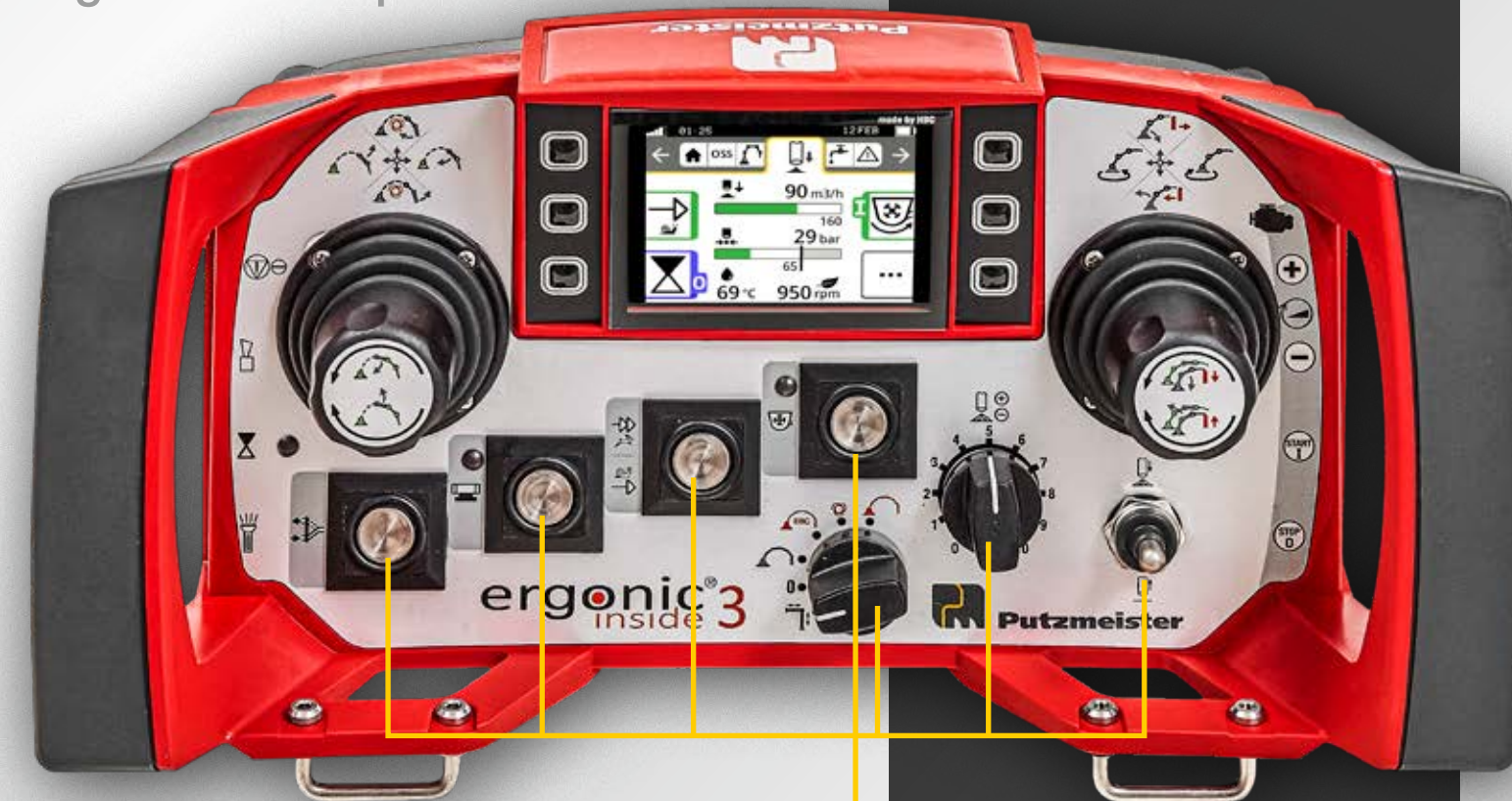
With a continuous operating concept and comprehensive fault management for a greater scope of action

## # DETAILED FAULT MANAGEMENT

To prevent downtime, there are comprehensible fault messages with suggested solutions – the job can almost always be completed with manual control.



## Ergonic® 3 – operation



**WORKING WITH A  
SMILE:  
INTUITIVE, EXACT  
AND EASY**

### Concrete action

- # Basic concrete pump functions can also be controlled via hardware buttons, independent from operation via the display.

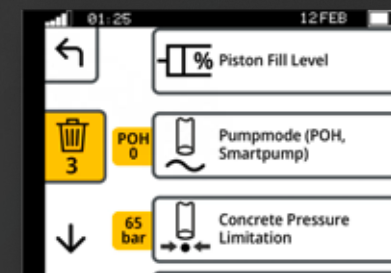
Quick-access buttons lead directly to results and are easy to operate even while wearing gloves.

### Keeping an overview – in every situation

- # The “static” menu bar guides users through the menu – with no chance of “getting lost”.
- # Neatly and intuitively arranged functions.
- # Simple menu structure with a maximum of two submenu levels.
- # Main menu with all standard functions and additional details in submenus.



Main menu



Submenu  
level 1



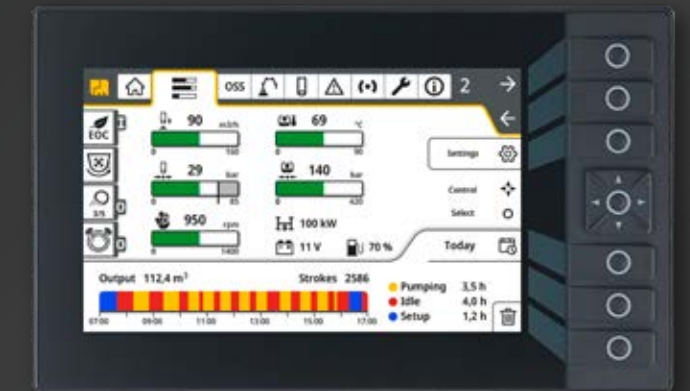
Submenu  
level 2

### Consistent concept on all “switching centres”

- # The menu structure is nearly identical on the remote control and the graphic display.
- # Hardware and software are perfectly matched at all operating positions.
- # The same intuitive operation on all Putzmeister products – without requiring a lot of training.



The additional screen on the control cabinet uses the same concept and offers a variety of information, settings and options.



Detailed setting options and a great deal of information makes it easier to understand the device.

### Dedication in every respect

Ergonic® inside means that the machines are quickly ready for use and they work with high power, fuel efficiency and low wear.

**And most importantly for machine operators: Work becomes easy!**



### # CONCRETE

Robust switches for basic functions ensure easy handling.

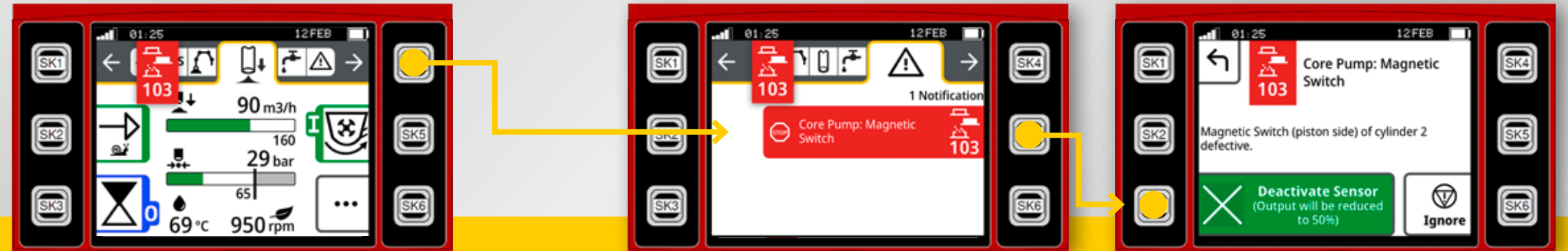
### # INTUITIVE

Easily comprehensible functions and work steps ensure focused working.

### # PRECISE

With the Ergonic® 3, you are using the powerful pump optimally and controlling the boom extremely precisely.





# NO DOWNTIME

## # SIMPLE FAULT MANAGEMENT – FAST HELP

- # If worst comes to worst, machine operators receive a clear and comprehensible fault message that includes possible causes.
- # The exact installation position of the affected component is specified with images and clear descriptions. This makes it easy to detect and replace defective fuses for example.
- # A great variety of suggested solutions are stored in the system. Machine operators can make many settings themselves directly on the machine to prevent a standstill.
- # Emergency operation with manual control enables machine operators to safely complete a job they have already started.

Clearly guided fault management on the radio remote control and the graphic display



## # REACTIVE

- # The comprehensive and reliable fault management perfectly prevents unwanted machine downtime.



# ERGONIC® 3

## ALWAYS READY FOR THE FUTURE

## # A FUTURE-ORIENTED SOLUTION

Interfaces for future expansions are already set up and software updates are easy to perform. So your Ergonic® 3 is always up to date.

## # SERVICE-FRIENDLY CONCEPT

Services can be access quickly and implemented efficiently to achieve maximum availability. That is true for the entire Putzmeister fleet.



# Ergonic® 3 – work with a smile

## Your benefits at a glance

- **Easy, intuitive and precise operation** – With a clear menu structure and intuitively arranged functions, work becomes quick and precise
- **Routine and reliable operation** – Thanks to the continuous operating concept for all Putzmeister products with the same functions and displays – whether on the radio remote control or the Ergonic Graphic Display (EGD) – machine operators can fully focus on their work.
- **Working without downtime** – Thanks to the intelligent fault management, faults are easy to detect and rectify – even without a Putzmeister technician. The multi-level emergency operation keeps the machine running even in the toughest conditions and in virtually every case.
- **Working with a smile** – All the positive experiences machine operators have made with our control systems are also found in the Ergonic® 3. What's new: Hardware and software are perfectly matched. The "static" menu bar comprehensively guides users, making it almost impossible to "get lost" in the menu. The menu structure with a maximum of two submenus is simple and clear. All standard functions are already contained in the main menu. This means machine operators can keep an overview in every situation.



## Putzmeister Concrete Pumps GmbH

Max-Eyth-Straße 10 · 72631 Aichtal / Germany  
P.O.Box 2152 · 72629 Aichtal / Germany  
Tel. +49 (7127) 599-0 · Fax +49 (7127) 599-520  
pmw@putzmeister.com · www.putzmeister.com

