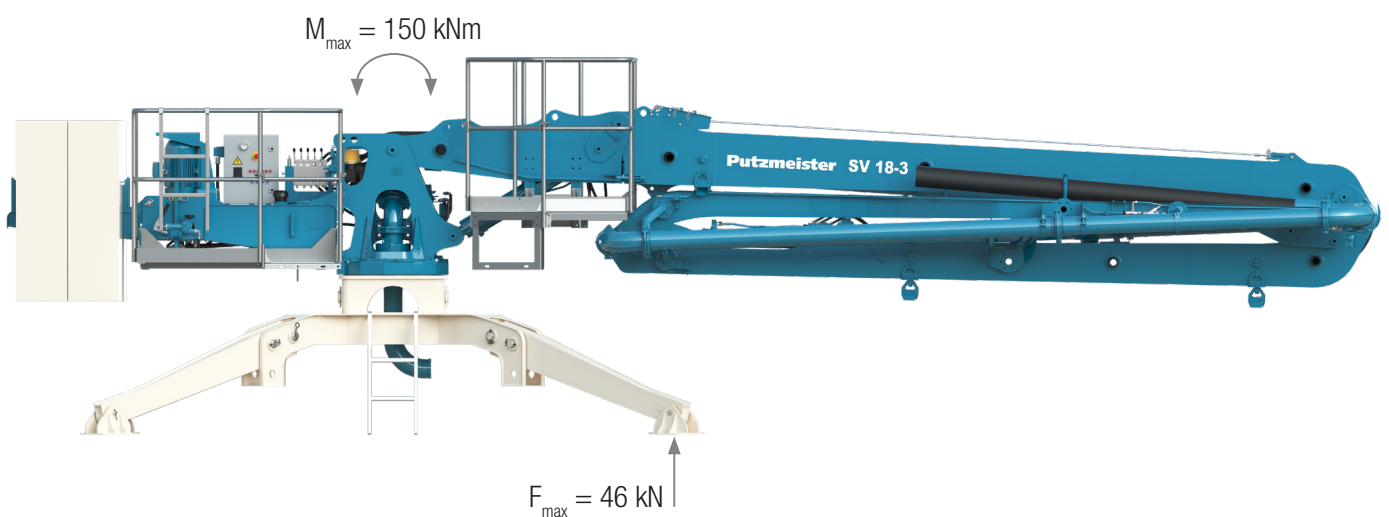
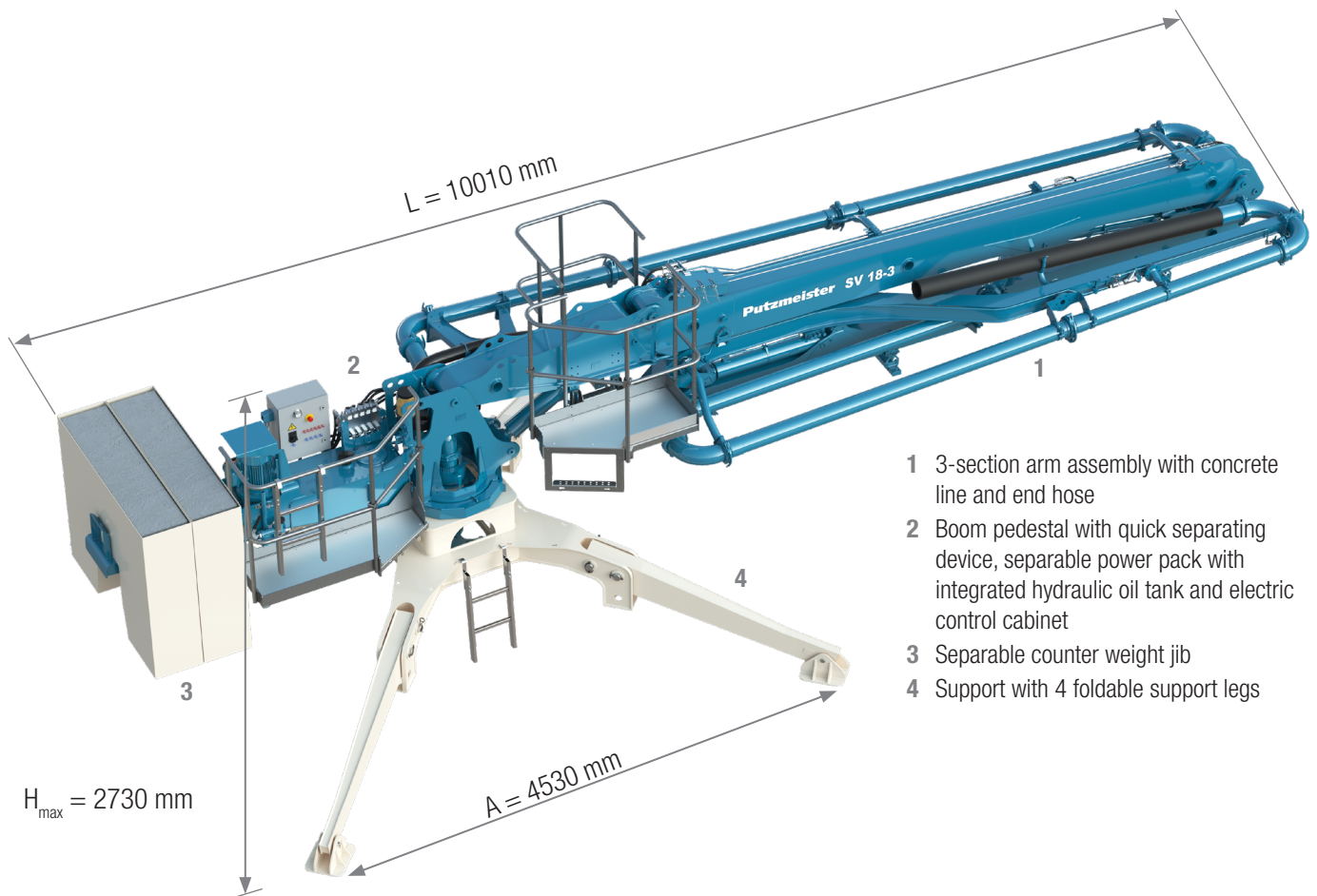
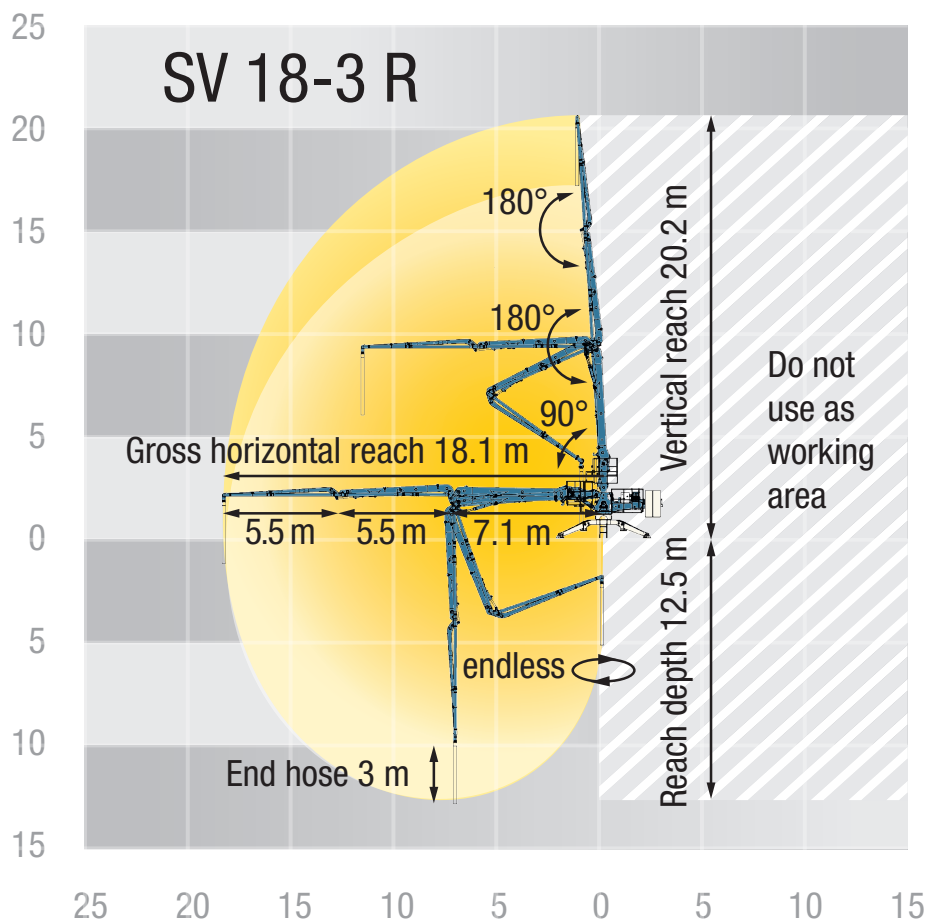


Stationary placing boom

SV 18-3 R



Reach information diagram



Technical data

Stationary distributor boom SV 18-3 R		
Sections		3
Reach height (approx.)	m	20.2
Horizontal reach	m	18.1*
Reach depth max.	m	12.5
Unfolding height	m	5.9
Delivery line		DN 125
End hose length	m	3
Slewing range	°	endless
Weight		
complete	t	4.23
compl. with counter weight	t	6.93
heaviest part	t	1.42
Transportation dimensions		
length	mm	10010
width	mm	2260
height	mm	2380

* center of slewing gear till end of boom

All data max. theor.

Dimensions can differ depending on configuration.

Serial delivery scope

2 × 1.35 t containers to be filled with concrete as counter weight

16 A CEE plug, power supply fused with 16 A

Arm assembly SV 18-3 R incl. transport frame

Delivery line DN 125 (1-layer)

El-hydraulic drive 7.5 kW / 400 V / 50 Hz

Electric motor with soft start

End hose 3 m DN 125 5.5"

Operating manuals (1 × paper, 1 × CD-ROM)

Painting: arm assembly RAL 5012 light blue

Painting: sub structure RAL 1015 light-ivory

Radio remote control

Sub structure with 4 foldable support legs

Working platforms incl. ladder

See quotation for exact serial delivery scope.
Comprehensive range of options available on request.