



SANY GROUP

QUALITY CHANGES THE WORLD

QUALITY CHANGES THE WORLD

Leadership



Liang Wengen

Chairman & CEO of SANY Group

Board of Directors



Liang Wengen



Tang Xiuguo



Xiang Wenbo



Yi Xiaogang



Zhou Fugui



Yuan Jinhua



Mao Zhongwu



Zhao Xiangzhang



Liang Linhe



Liang Zaizhong



Dai Qinghua



Yu Hongfu



Huang Jianlong

Human Beings Are Great For Their Dreams

I enjoy watching both sunsets and sunrises. I'm always moved by the splendor, beauty and sense of accomplishment of each day's colorful sunset also by the feeling of renewal and promise brought on by each morning's sunrise. In the same way, I have great dreams for my company, SANY. As a powerful inner driver, these dreams push me to succeed, to excel. I believe that my hard work can contribute to the success of SANY in the World's arena.

Because of its many risks and challenges, starting a business takes courage. But in less than two decades, SANY has grown from its humble beginnings to become a leader in construction machinery manufacturing. The SANY brand and its products are now recognized as High Quality. Encouraged by this success, I have become even more determined to fulfill

the monumental mission of expanding our product lines and improving our quality even more. We will be truly successful only when SANY's products are superior to those of our strongest competitors.

SANY's goal is to reshape China's construction machinery industry with advanced SANY technology, to build products recognized for their quality Worldwide while continuously improving them through innovation, to exceed our customers' expectations with unparalleled quality and services, then finally to make sure that Made in China means Top Quality to the rest of the World.

Human Beings Are Great For Their Dreams. SANY's dreams are being realized by its employees, step-by-step, one-by-one.

About

SANY Group

Founded in 1989, SANY Group has become a multi-national company that is pursuing the vision of "building a first-class company, fostering first-class talents, and making first-class contributions to society". Since its establishment, SANY is striving to build a global brand and become an industry-leading equipment manufacturer.

SANY's core businesses are design, manufacturing, sales, and support of heavy-duty engineering equipment, covering a full spectrum of products including concrete machinery (pump trucks, mixer trucks, trailer pumps, batching plants), earthmoving machinery (excavators, loaders), hoisting machinery (cranes), road machinery (soil compactors, motor graders, pavers), piling machinery (rotary drills), port machinery (reach stackers, telehandlers), petroleum equipment, mining machinery (mining trucks, roadheaders), wind harness system, and prefabricated equipment.

Through an acquisition of Putzmeister, a leading German concrete machinery manufacturer, SANY concrete machinery ranks No. 1 globally for 16 years consecutively. Regarding earthmoving equipment, the units of SANY excavators sold in 2020 ranked No. 1 among all OEMs, dominating 15% market share globally. SANY's large-tonnage truck cranes, crawler cranes, piling machinery and roadheaders all take No. 1 title in China.

SANY is also well recognized by prestigious publications. Nominated in Forbes Global magazine, SANY ranks 468th, the very first Chinese heavy-duty equipment manufacturer ever listed in Forbes. Plus, SANY was among world top 500 largest companies per Financial Times, the only company originated in China. In 2021, the total sales revenue of the company broke a record of 27 billion USD.

SANY Group operates 11 manufacturing complexes located in China, U.S.A., Germany, India, and Brazil. Our sales and service network covers over 150 countries and regions. SANY Group has three listed companies: SANY Heavy Industry, listed in Shanghai Stock Exchange, SANY International Development Ltd., listed in Hong Kong Stock Exchange and SANY Polytechnic College listed in NEEQ in China.

Sticking to our mission "Quality changes the world", SANY invests about 5% of its annual revenue on R&D. In terms of technology development, SANY has applied for a total of 13,694 patents, in which 10,613 has been awarded. There are three state post-doc research hubs, two national enterprise technical centers, and one state-approved testing center in SANY.

Vision

Build a first-class enterprise
Foster first-class talents
Make first-class contributions

Mission

Quality changes the world



1989

Starts from scratch

Liang Wengen, Tang Xiuguo, Mao Zhongwu and Yuan Jinhua founded Hunan Lianyuan Welding Material Factory in Lianyuan, Hunan province.



2003

A listed company

SANY Heavy Industry is successfully listed on the Shanghai Stock Exchange.
SANY Heavy Machinery Co., Ltd. is founded, focusing on excavators and oil drilling machinery.



2012

Putzmeister made a member of SANY Group

SANY acquires leading German concrete machinery manufacturer Putzmeister.



2021

Ranking 468th in Forbes Global 2000

SANY Heavy Industry ranks first among heavy equipment manufacturers in China and second in the world.



1994

Advances into heavy machinery industry

Hunan Lianyuan Welding Material Factory is officially renamed to Hunan SANY Group Co., Ltd. and its headquarters officially moves to Changsha.

2011

Recognized in a leading publication

SANY Heavy Industry enters the FT Global 500 ranking of the world's largest companies.



2020

Sales exceeded 100 billion RMB

SANY Heavy Industry becomes the first heavy equipment manufacturer with sales exceeding 100 billion RMB in China.
SANY sold 98,705 excavators in 2020, accounting for 15% of the total volume for excavator sales in the global market.

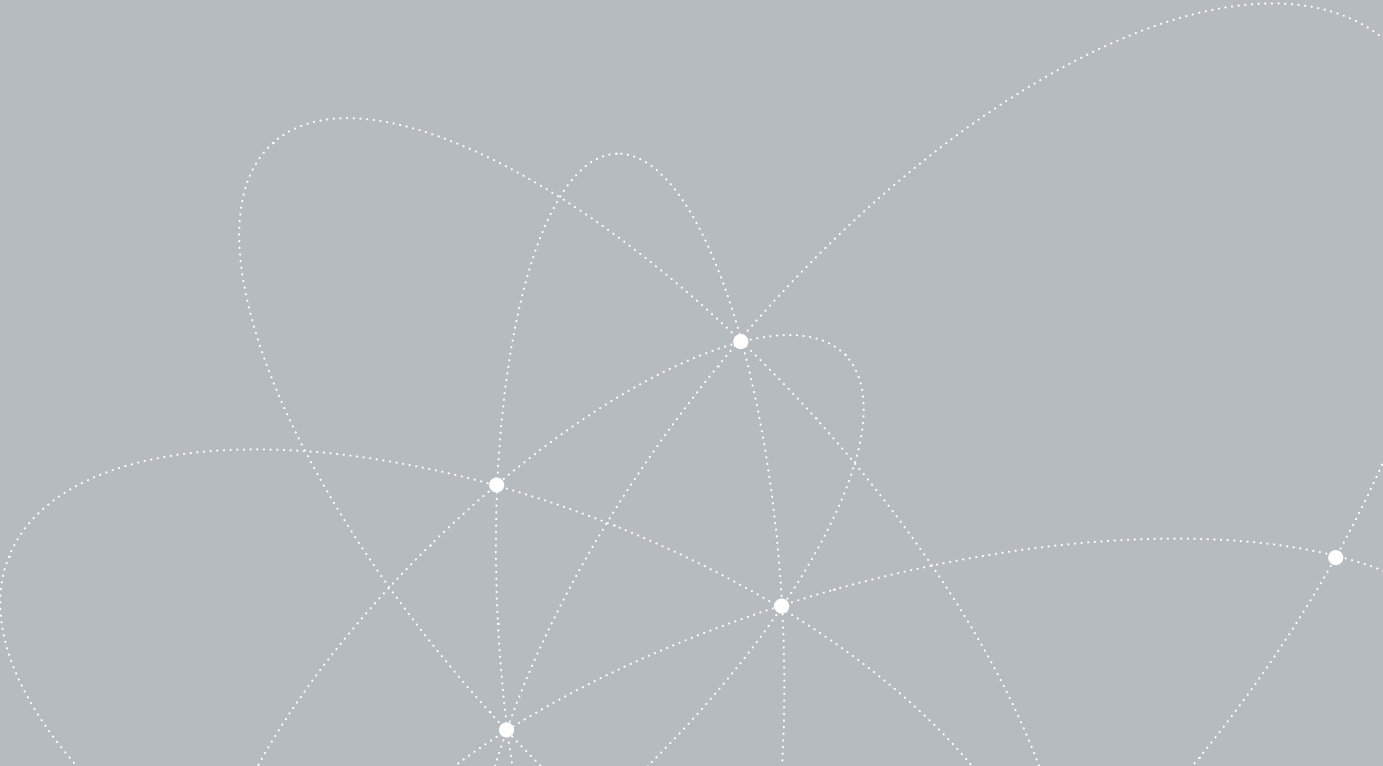


INDUSTRIAL LAYOUT



US
A
N
K

QUALITY CHANGES THE WORLD



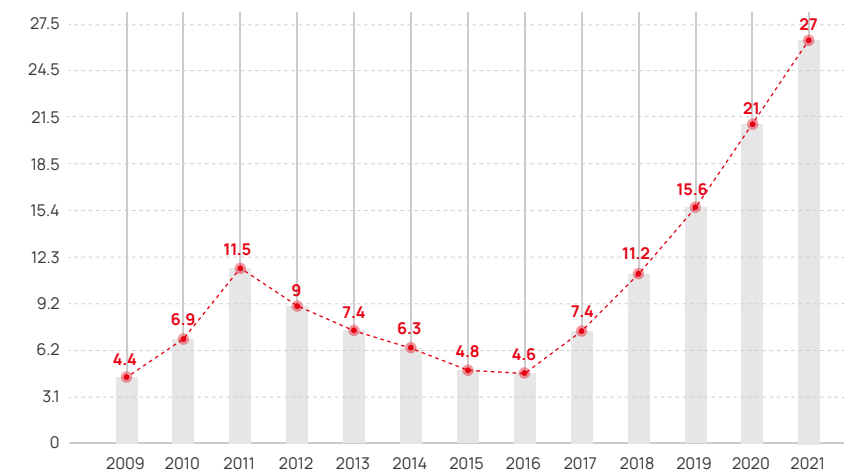
INDUSTRIAL LAYOUT

As a leading original equipment manufacturer of construction and mining machinery, renewable energy system, and cloud service provider, SANY expands international footprints with 11 industrial bases and 150+ offices and dealership networks around the globe, supporting our customers to fulfill their commitments.



Sales Revenue of SANY Group from 2009 to 2021

(in billion U.S. dollars)



25
Manufacturing Facilities

100+
Offices

400+
Agents

4
R&D Centers

8000+
Suppliers

150+
Sales Regions&Countries

11+
Industry Parks

100+
Member Companies

PEACHTREE, USA

Made for America, More Than Machines

More than 11 years committed to the local community, SANY America not only manufactures and services machinery popular in the market from a base in Peachtree, Georgia, but also contributes labor development and social responsibilities.



BEDBURG, GERMANY

Men & Machines

Versed in design and engineering, SANY Europe was inaugurated in Bedburg, Germany, in 2011. SANY Europe offers a wide range of CE compliant products, including hydraulic excavators ranging from 1.6t to 50t, mobile port machinery (reach stacker, empty container handler, heavy duty forklift), rotary drilling rig and crawler crane for the European market.



PUNE, INDIA

Incredible Industrial Implementation

The growing market in India is always attractive to global investors. SANY India, initiated in 2002, was the Group's first global market and is now growing into a major frontline with 7 offices and 28 dealers to cover South Asia, Southeast Asia, the Middle East, and North Africa. With just the right blend of advanced technologies and local best practices, we bring top-selling excavators, cranes, and concrete pumps to the market.



PUTZMEISTER

One Team, Dual Brands

Famous for its nickname "Elephant", Putzmeister joined SANY Group in 2012 and has continued its legendary story together with SANY concrete machinery. Below, the "Elephant" is supporting the most challenging project: renovation of a bridge mid-air across the Hoover Dam, USA.



BEIJING

Brain and IIOT

Headquartered in Beijing, SANY Heavy Industry Co., Ltd. (SANY) brings together the brain power of leadership and directs strategic moves of the company. In the world of industrial internet of things (IIOT), SANY's Rootcloud has augmented 100+ key accounts to elevate their OEE, reduce cost per unit, save energy, and boost corporate revenue by ways of data lifecycle management, industrial blockchain, cloud platform operation, and big data analysis.



SHANGHAI

Double-Base, Double-Force

Excavators are the king of construction machinery. SANY has been dedicated in the research, design, production, service support of earthmoving machinery for decades. From two manufacturing bases in Shanghai-metropolitan region, the most advanced and energetic economic zone in China, 250,000+ SANY excavators and wheel loaders are backing up the rapid development of infrastructure.



CHANGSHA

Square One, Aim High

Changsha was where SANY Heavy Industry took off in 1994. Since then, maintenance, repair, and overhaul have been relentlessly ongoing. Nowadays, production facilities are highly automated with robotic arms and computerized conveyors. Our innovation in manufacturing never stops and aims higher every day.



SHENYANG

Historical City, Mature Mining-Tech

Located in Shenyang, a city with 2318 years of history, SANY-branded mining equipment, including off-highway trucks, articulated dump trucks, roadheaders, and scraper conveyors are being deployed in open pit and underground mining sites worldwide. From computer-aided design and rapid prototyping to comprehensive test tracks, technologies are being applied to make our equipment tough and solid.



ZHUHAI

Port City, Port Machinery

Beautiful and peaceful, a city of sands and water, Zhuhai is geographically located in southern China, surrounded by metro cities like Hong Kong, Shenzhen, Guangzhou, and Macao. SANY strategically initiated a green field project of 300,000m² indoor and outdoor facilities to build port machinery in the city, supporting container-intensive port operation with reach stackers and material handlers as well as gantry cranes.



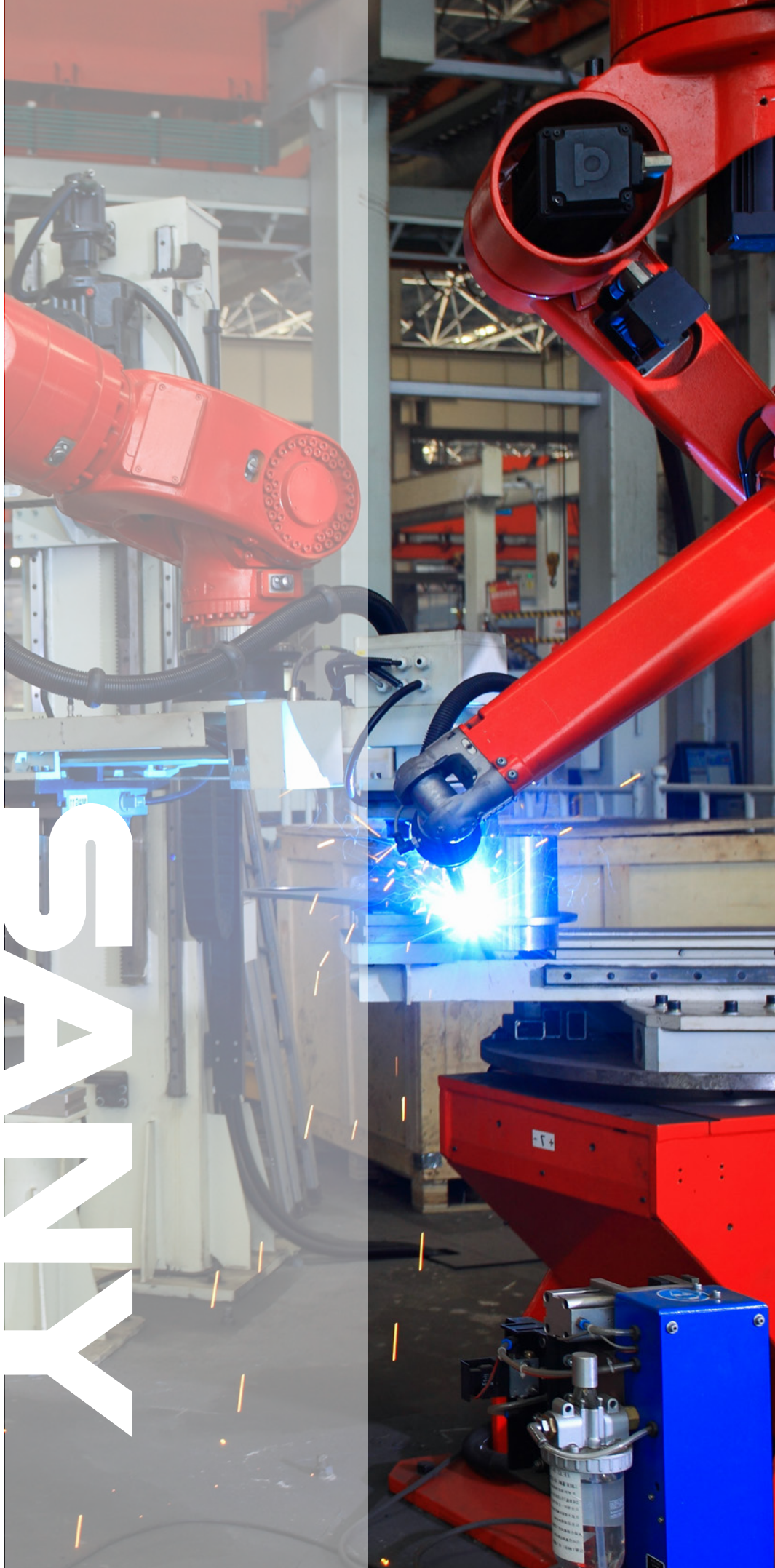
XINJIANG

Wild West, Golden Opportunities

SANY Northwest industrial complex is one of the strategic facilities that strengthens the connection of China and Eurasia. Rain or snow, the complex is supplying regions of northwest China, Central Asia, and Russia with a comprehensive product portfolio for construction and mining.

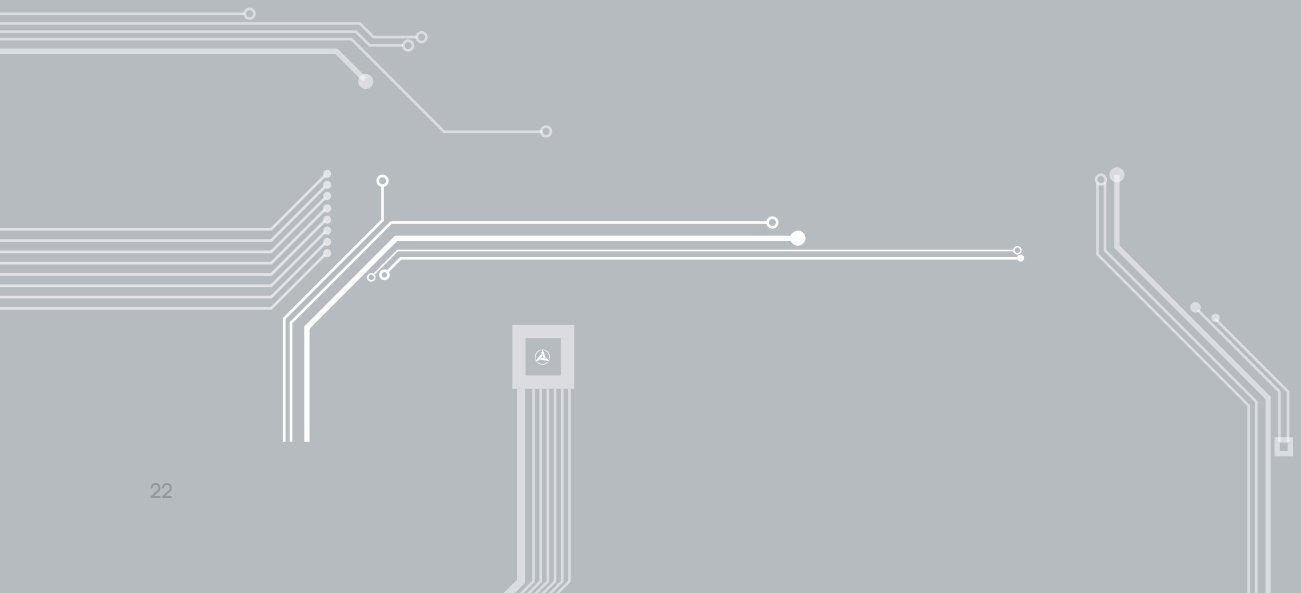


INTELLIGENT MANUFACTURING & DIGITALIZATION



SANY

QUALITY CHANGES THE WORLD





Lighthouse factory

SANY took the lead in the industry to construct more than 20 "lighthouse factories". Since the renovations and upgrades were completed, SANY's No. 18 plant has increased its production rate by 50%. A concrete pump rolls off the line every 45 minutes with a production capacity of over 10,000 per year.



The Davos World Economic Forum (WEF) published the latest batch of “Lighthouse” factories in the global manufacturing industry. SANY’s drilling machinery factory in Beijing made the list, becoming the first certified Lighthouse factory among heavy equipment manufacturers.

The digital transformation of SANY prompted the launch of a new subsidiary company, SANY Robot Technology Co., Ltd., which is propelling SANY Group towards accomplishing the mission of becoming the pioneer of intelligent manufacturing.

Back in 2019, when the existing drilling machinery factory was being upgraded to become the first world-class Lighthouse factory, there were no precedents – no examples for SANY to refer to nor existing technology or suppliers to rely on. Thus, SANY Robot Technology was born in the context of SANY’s digital transformation. By deeply participating in the phases of conceptual design, technological verification and construction, SANY Robot Technology grew alongside the rebirth of the drilling machinery Lighthouse factory.



PRODUCT PORTFOLIO



QUALITY CHANGES THE WORLD

Product Milestones

1994

The rollout of the first SANY trailer-mounted concrete pump ended China's dependence on imported units.

2000

SANY produced the world's first fully hydraulic motor grader.

2004

SANY developed the three-gradation trailer pump successfully.

2006

SANY successfully entered the port machinery market with its RSC45 5M Container Reach Stacker.

2008

A fully hydraulic rotary drilling rig of the largest tonnage in Asia and the most powerful whole-rock roadheader in Asia rolled off the line at SANY.

2010

The SANY SAC12000 1,200-ton truck crane, the largest in China, was manufactured.

2013

SANY's A8 Series Concrete Plant integrated top technology between China and Germany, which led the first Industrial Revolution in the construction concrete industry.

2015

SANY successfully launched the first 48-m long-span water tower fire truck, entering the field of firefighting equipment.

2017

SANY successfully launched China's first high-mobility multifunctional fire truck.

2019

SANY released the world's first 5G teleremote-controlled excavator, the world's first autonomous electric truck mixer, autonomous rollers and pavers, and autonomous cranes, leading the industry into the autonomous era.

2021

SANY broke the world's largest tonnage crane record for the 3rd time with the delivery of its 4500 ton crawler crane SCC45000A.

1998

SANY successfully developed the first 37-meter truck-mounted concrete pump.

2003

The launch of a complete product line of SANY road machinery marked a milestone in road construction technology in China.

2005

SANY launched the first 56-meter concrete pump in Asia.

SANY's cold planer represented a breakthrough in road construction technology in China.

2009

SANY produced the first 2 MW wind turbine and achieved grid-connected operation, making SANY a global wind power manufacturer with proprietary intellectual property rights and the capacity to produce the entire industrial chain.

SANY launched the SRT95, China's biggest large-tonnage off-highway truck, ending China's dependence on imported mining trucks.

2011

SANY set a new Guinness World Record of 86 m for the longest boom on a concrete pump.

Known as the "world's No. 1 crane", the SCC8 6,000 t-m crawler crane rolled off the line, having a maximum lifting capacity of 3,600 t.

2014

SANY entered the field of prefabricated construction equipment.

2016

SANY successfully launched three products including light-duty assault vehicles, truck-mounted mooring airships and light-duty unmanned combat platforms.

2018

SANY Heavy Truck was born, launching the first heavy truck of which 12,000 units were sold in the first year through online sales alone.

2020

SANY produced the SCC40000A, a 4,000-t capacity crawler crane with a max lifting moment of 9,000 t-m.

SANY released the 125-t large excavator SY1250H.

SANY developed the autonomous mining truck SKT90E, which can be coordinated with the 5G-controlled excavator.

2022

SANY's first 300-ton electric-drive front shovel, SY2600E and 200-ton electric-drive excavator SY2000H officially rolled off the production line.

CONCRETE MACHINERY



SANY is the world's largest manufacturer of concrete machinery including concrete pumps, trailer pumps, line pumps, truck mixers, batching plants, and more. The sales and manufacturing volume of concrete pumps have ranked No. 1 in the world. The sales volume of concrete batching plants has ranked No. 1 globally for 11 consecutive years. SANY's market

share of precast concrete equipment remains the largest in China.

With more than 20 years of technological innovation, SANY concrete machinery continually sets new Guinness World Records. Over 80% of skyscrapers worldwide over 500 meters in height are pumped by SANY.



Truck-mounted Concrete Pump



Truck Mixer



Batching Plant



Line Pump



Placing Boom



Trailer Pump



Mortar Pump



Wet Spray Machine

ROAD MACHINERY



SANY road machinery is sold worldwide. The market share of fully hydraulic rollers, asphalt batching plants and pavers ranks No. 1 in China. SANY paver sales volume has ranked No. 1 for 6 consecutive years in China

EXCAVATOR



SANY excavators have topped market share in China for over 11 consecutive years. SANY sold 98,705 excavators in 2020, accounting for 15% of the total volume for excavator sales in the global market.



Roller



Motor Grader



Paver



Cold Planer



Asphalt Batching Plant



Mini Excavator



Small Excavator



Medium Excavator



Large Excavator



Wheeled Excavator



Wheel Loader

PILING MACHINERY



One out of every two rotary drilling rigs in China is made by SANY. SANY has set the record for the deepest offshore drilling with its 149-m rotary drilling rigs. SANY has successfully met the need for large-scale and ultra-deep pile foundation construction previously lacking in the domestic rotary drilling equipment industry.



Rotary Drilling Rig



Hydraulic Grab

HOISTING MACHINERY



SANY is a record breaker in the manufacturing of large-tonnage crawler cranes around the globe including the first 1,000-t crawler crane in Asia, the first 1,200-t all-terrain

crane in Asia, the 4000-t crawler crane debuted in 2020 and the 4500-t in 2021. SANY hoisting machinery also sets and maintains the wind power hoisting height record of 162 meters.



Truck Crane



All-terrain Crane



Truck-mounted Crane



Rough-terrain Crane



Telescopic Boom Crawler Crane



Tower Crane



Lattice Boom Crawler Crane

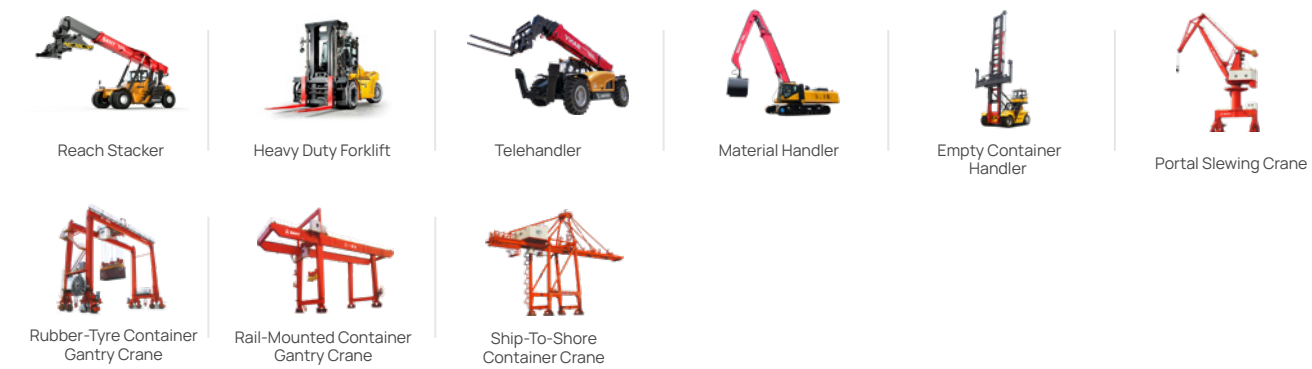


Base Construction Crawler Crane

PORT MACHINERY



SANY is China's leading port machinery manufacturer. SANY's reach stackers and empty container handlers have topped the market share at over 60% since 2008. SANY ship-to-shore container cranes and automatic container gantry cranes have a good reputation around the world.



COAL MINING MACHINERY



The first SANY roadheader rolled off the line in 2005. Now SANY roadheaders range from 100 kW to 757 kW in total power. SANY's market share in China has exceeded 50% (with hard rock tunnel boring machines over 70%) and ranks No. 1 for 11 consecutive years.



MINING TRUCK



SANY has three major series of mining trucks with load capacities from 33 t to 360 t. Having high standards for safety, reliability, economy and durability, SANY has become the leader of China's new generation of mining trucks.

DUMP TRUCK



In 2015, SANY began manufacturing dump trucks. In 2018, the sales revenue of SANY dump trucks exceeded 5 billion yuan with the 100,000th dump truck rolling off the production line. SANY dump trucks have been sold in over 40 countries with many being exported to the Middle East, Africa, Latin America, Southeast Asia and Central Asia.



Off-highway Truck



Wide-body Mining Truck



Articulated Truck



Dump Truck

FIRE-FIGHTING EQUIPMENT



SANY is a leading equipment manufacturer and service provider in the emergency rescue industry. The long-span water tower fire truck is the world's first fully-folded long-span water fire truck with a 3.3-m minimum support system.

PRECAST CONCRETE



In 2008, SANY officially marched into the precast concrete industry and became one of the earliest Chinese companies engaged in research on construction industrialization technology and prefabricated building systems. To date, the

national market share of SANY's PC product line exceeds 50%. The structural technology of the SPCS system developed by SANY has become an industry standard.



Elevating Platform Fire Truck



Forcible Entry Fire Truck



Heavy Emergency Rescue Fire Truck



High-Mobility Multi-Functional Fire Truck



Large Tank Water Tower



Long Span Water Tower Fire Truck



Precast Concrete Production Line



Complete Set of Reinforcement Equipment



PC Special Heavy Tower Crane



Special Transport Vehicles For Prefabricated Members



Mobile Impact Crusher



Heavy Duty Forklift



PC Special Batch Plant

WIND TURBINE



SANY has emerged as a leading and competitive manufacturer of wind turbines and wind farm services for global markets. SANY manufactures major components such as blades, generators, gear box components, control systems and other

sub-systems as part of our vertical integration strategy. Quality control, efficient service, spare parts availability, improved power curve and comprehensive test systems guarantee the quality of SANY wind turbine generators.

SEMI-TRAILER TRACTOR



SANY Semi-trailer Tractor is an Internet-based truck product that integrates comfort, intelligent programming and cost effectiveness. Launched in 2018, SANY Semi-trailer Tractor creates a new truck ecosystem model designed to develop interconnection, intelligence, sharing and ecosystem

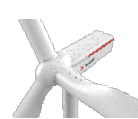
collaboration to build a better, more intuitive product for customers. The new sales channel of SANY Semi-trailer Tractor has opened up a new chapter for web-based sales of commercial vehicles.



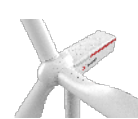
2.XMW Platform WTGS



3.XMW Platform WTGS



4.XMW Platform WTGS



5.XMW Platform WTGS



Semi-trailer Tractor



Hydrogen Semi-trailer Tractor



Electric Semi-trailer Tractor

PETROLEUM EQUIPMENT



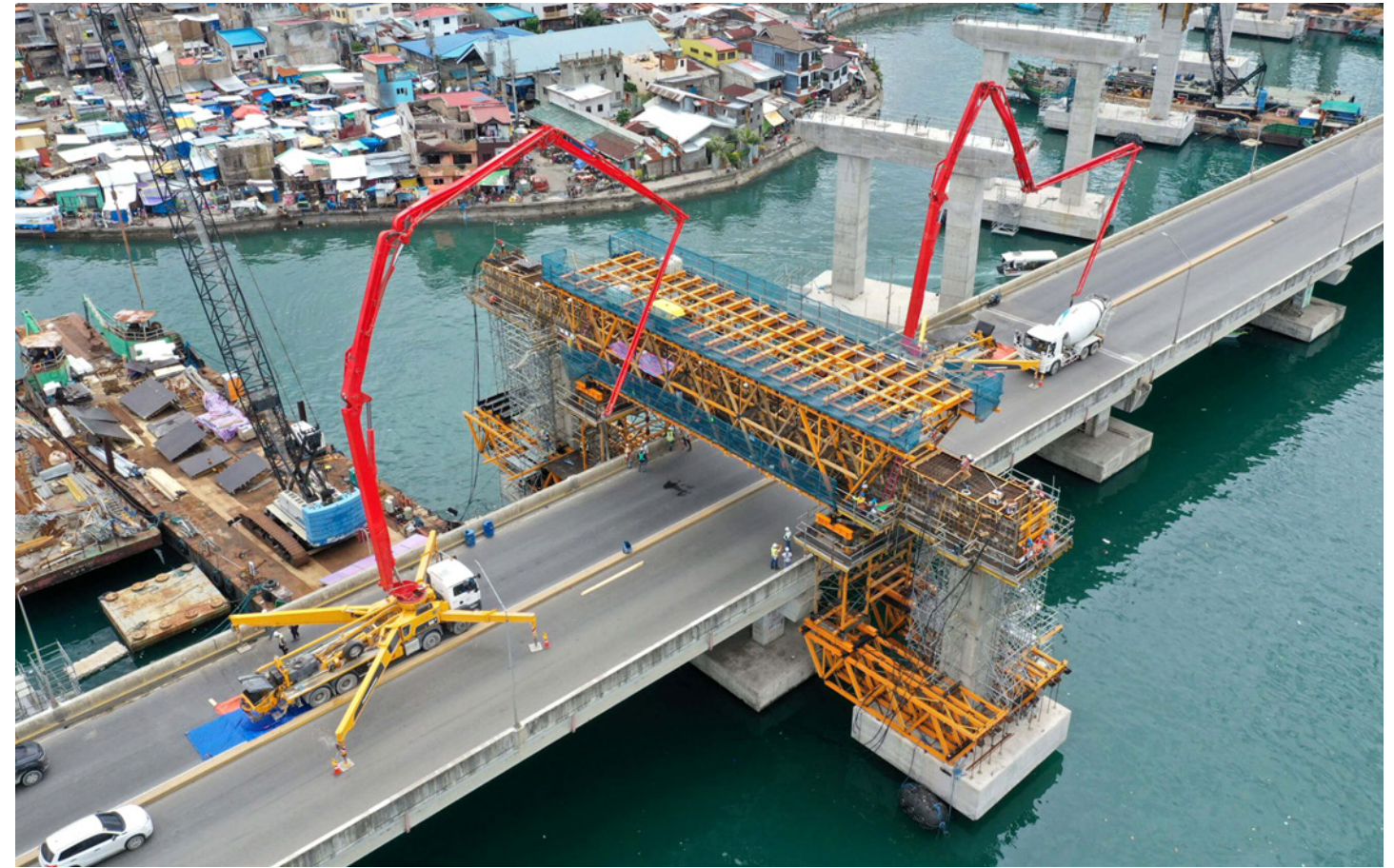
Established in 2013, SANY Petroleum Equipment is engaged in the R&D and manufacturing of oil and gas cementing and fracturing equipment and of drilling and production automation equipment, EPC general contracting and technical services for oilfields.

SANY Petroleum has developed complete sets of fracturing equipment (including fracturing trucks, electric drive

fracturing skids, mixed distribution vehicles, instrument cars, coiled tubing rollers, etc.), and complete sets of drilling and servicing automation equipment (including high altitude automated pipe-racking manipulators, floor automated pipe-packing manipulators, remote automatic operation platforms, centralized control systems, etc.).

We are committed to providing safe, intelligent and environmentally friendly digital integration solutions for global petroleum exploration and development.

PUTZMEISTER



Founded in 1958, Putzmeister Holding GmbH is headquartered in Stuttgart, Germany and is now a wholly-owned subsidiary of SANY Group. Putzmeister develops, manufactures and sells a full range of concrete pumps, industrial pumps and auxiliary equipment, and provides complete placing schemes for concrete prefabrication plants and concrete construction

projects. Putzmeister has subsidiaries for service and support in more than a dozen countries around the world. In 2012, Putzmeister merged with SANY Heavy Industry and experienced rapid growth. In the first year after the merge, sales rose by 30%. In 2016, Putzmeister was declared "the Best Employer in Germany" for the very first time.



Mechanical Fracturing Truck



Hydraulic Fracturing Truck



Barrel Fracturing Blender Equipment



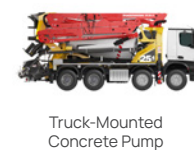
Blender Truck With Capacity



Intelligent Data Equipment



Coil Tubing Truck



Truck-Mounted Concrete Pump



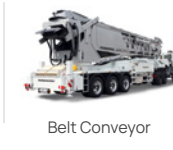
Shotcrete Machine



Line Pump



Concrete Pumps Stationary

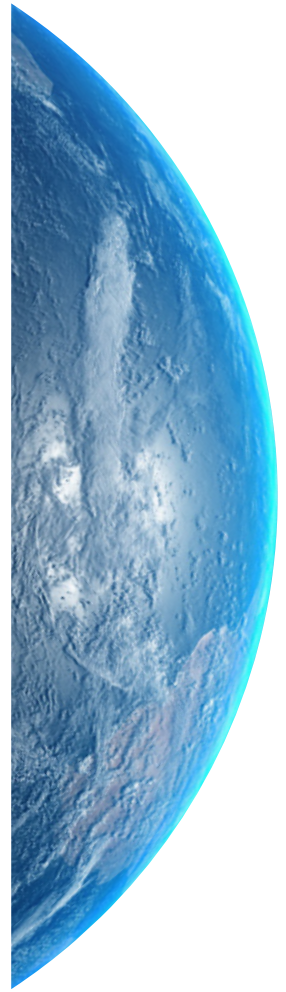
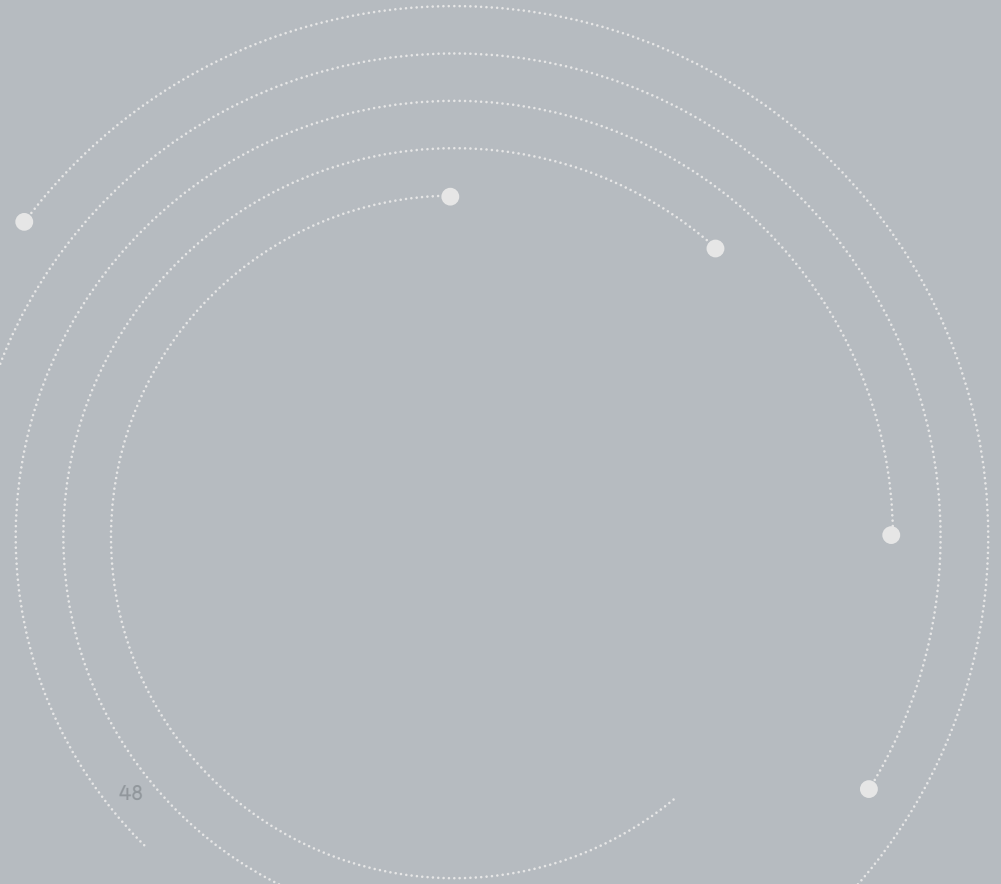


Belt Conveyor



Placing System

GLOBAL PARTNERS



S
A
N
N
Y



GLOBAL PARTNERS

SANY has established a sales network in more than 150 countries worldwide and has partnered with more than 400 dealers and subsidiaries. Together with its global partners, SANY is dedicated to offering better products and services to its global customers under one of the company's strategies - Globalization.



CONSTRUCTION CASES



SANNY

QUALITY CHANGES THE WORLD



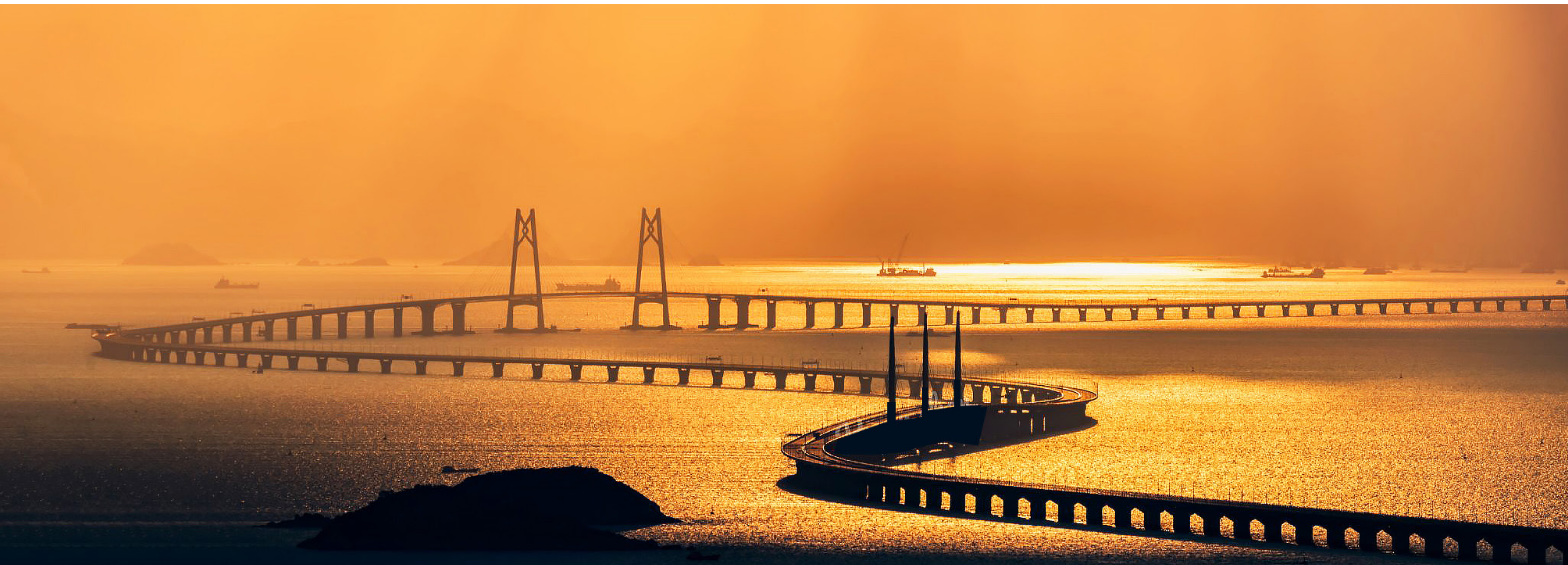
ASIA



Three Gorges Dam, China



Landmark 81, Vietnam





Burj Khalifa Tower, UAE



Shanghai Center, China



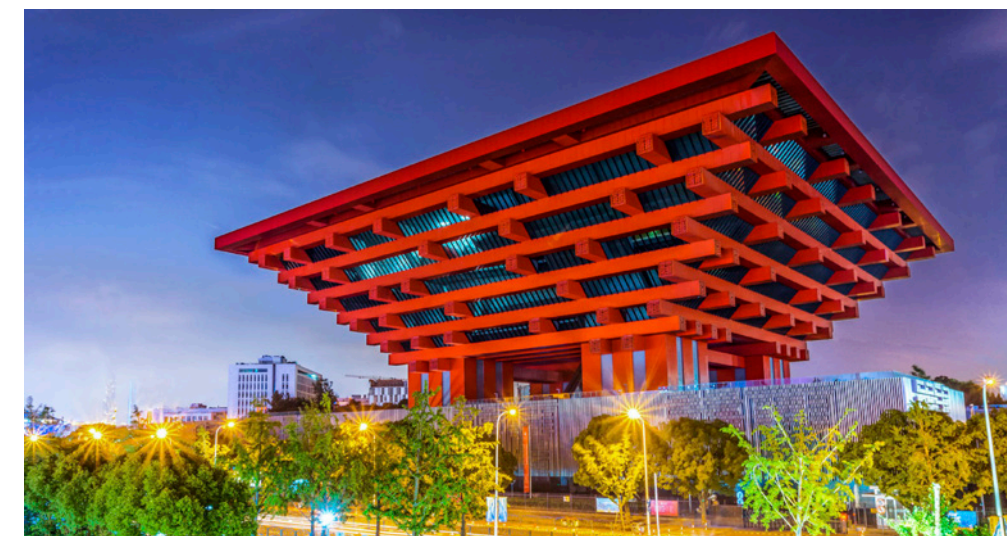
Qinghai-Tibet Railway, China



Beijing Daxing International Airport, China



Beijing National Stadium, China



China Pavilion at Expo 2020, China



AMERICA



Mato Grosso, Brazil



Rio Olympic Sites, Brazil

EUROPE



2009 World University Games Project, Serbia and Montenegro



Pelješac Bridge, Croatia

1915 Çanakkale Bridge, Turkey



Budapest-Belgrade Railway, Hungary and Serbia



Istanbul Airport, Turkey

MIDDLE EAST

Neom City Project, Saudi Arabia



The Avenues Park, Bahrain



Al Janoub Stadium, Qatar



AFRICA



East-West Highway, Algeria



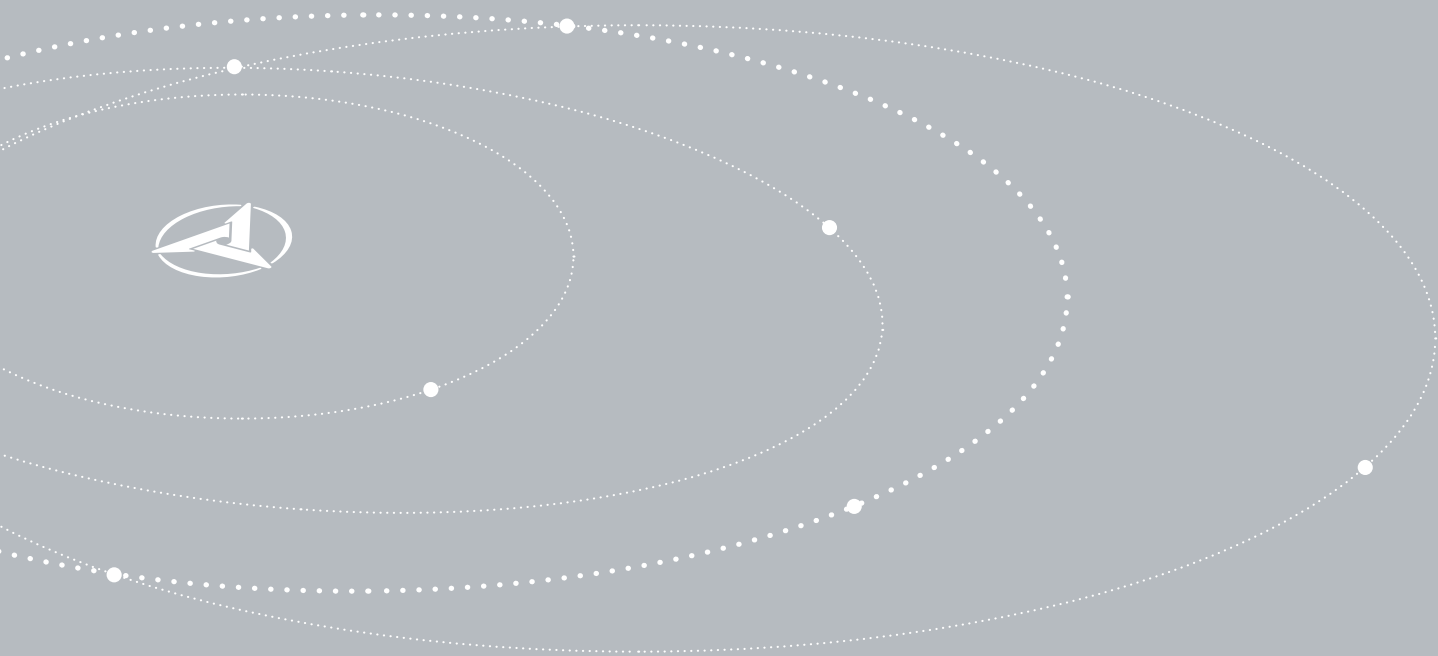
Green Point Stadium, South Africa



Adama Wind Farm II, Ethiopia



SOCIAL RESPONSIBILITY



S
A
N
I
T
Y



Empowering Women in Mining Sector in South Africa

Nkwe Platinum and SANY Southern Africa started a week-long program and provided an entry-level excavator training program for six women from their mining communities. Through the program, the six trainees gained both theoretical knowledge and hands-on operation experience in lectures and practice classes.



Tinkering Education

The recently launched project by SANY Foundation Walawala Tinkering Education is a pilot program of an advanced education idea that emphasizes the training of creativity and hands-on learning. Through the activity, a group of preschool-aged children in rural China knows what a crank-link mechanism is and how it works. SANY Foundation will expand and develop additional curricula customized for children in rural China, with the promotion of educational equality being a fundamental goal.





Excavator Light Show Raises Money for Families in Need

On Christmas Eve 2020, SANY America held its first drive-by light show. Two SANY excavators decorated in lights were pulled by a lit-up flatbed through the streets, raising over \$5,000 in food for families in need.

The Dream Project of SANY Foundation

SANY Foundation helps talented underprivileged students get the education they deserve. In 2014, SANY Foundation initiated the Dream Project with an annual investment of 400,000 USD to help give good students from underprivileged families an equal chance at a good education and a better future.





Donation of Medical Supplies Across the World

During the worldwide outbreak of COVID-19, SANY donated over 300 million medical masks to over 30 countries including Italy, France, Germany, Japan, Austria, and Sweden, among others, fighting COVID-19 in 2020.

A German proverb was written on the box of the masks that SANY donated to Germany: "Mountains and valleys don't come together, but humans do." The quote means "Our destiny is closely connected in both good and hard times."

2020 Race Against the Pandemic

In January 2020, with the outbreak of the COVID-19 pandemic in China, SANY rushed to assist in the construction of Fire God Mountain hospital and Thunder God Mountain hospital in Wuhan. SANY promptly delivered 41 cranes, 8 concrete pumps, 22 excavators and over 40 service engineers to the site. They completed two months' worth of work in four days, ensuring the delivery of the two hospitals in record time and making contributions to the fight against the pandemic.





Rescue in 2011 Fukushima Nuclear Disaster

In 2011, SANY donated a 62-meter concrete pump to the Tokyo Electric Power Company to help tackle the crisis of the Fukushima nuclear disaster.

At that time, SANY was the only manufacturer having remote control technology for concrete pumps. The machine was operated from a distance of two kilometers. A small water hose and a remote camera were installed at the end of the concrete boom. Through this process, the reactors were sufficiently cooled down with the continuous pumping of water.



Hunan Ice Storm Rescue in 2008

In January 2008, Hunan Province, the location of the SANY Group headquarters, suffered a major ice storm. SANY immediately initiated de-icing rescue operations with 23 of its motor graders and 51 machine operators on the Jingzhu Expressway. After 10 days and nights of operations, 586 miles (943 kilometers) were cleared, resulting in the SANY motor grader being recognized as the "meritorious motor grader".