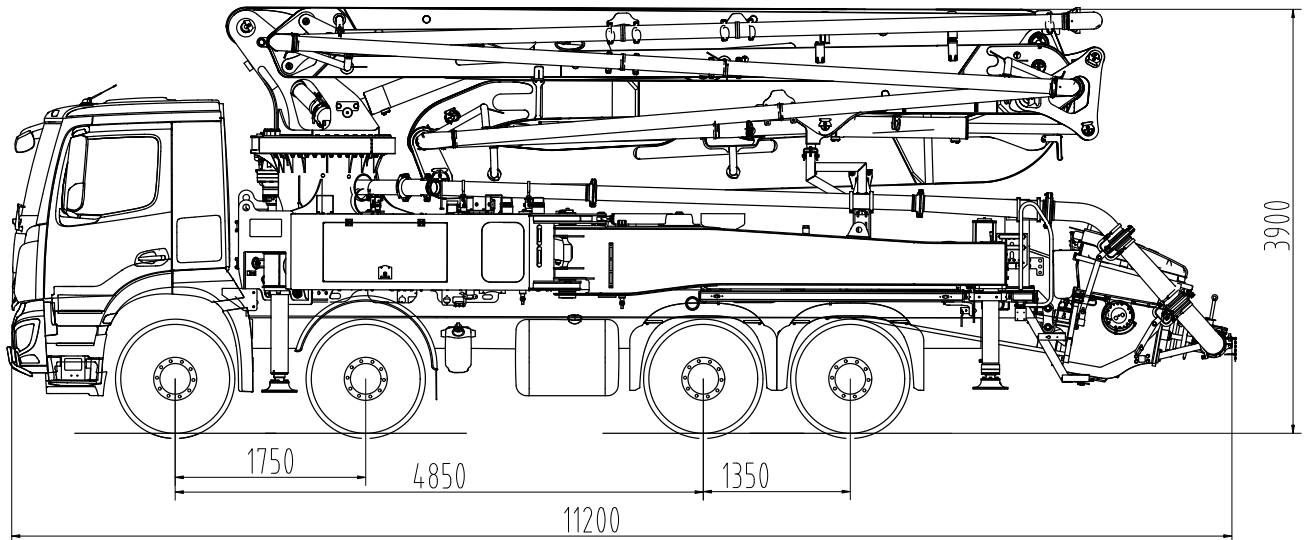


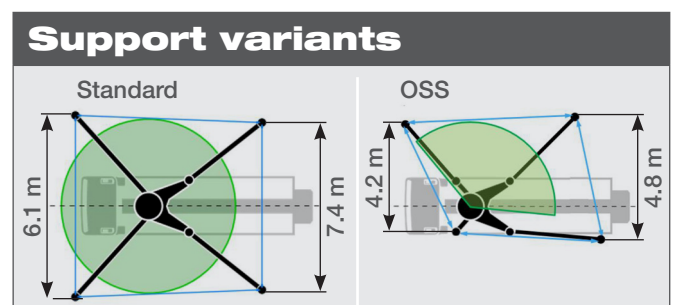
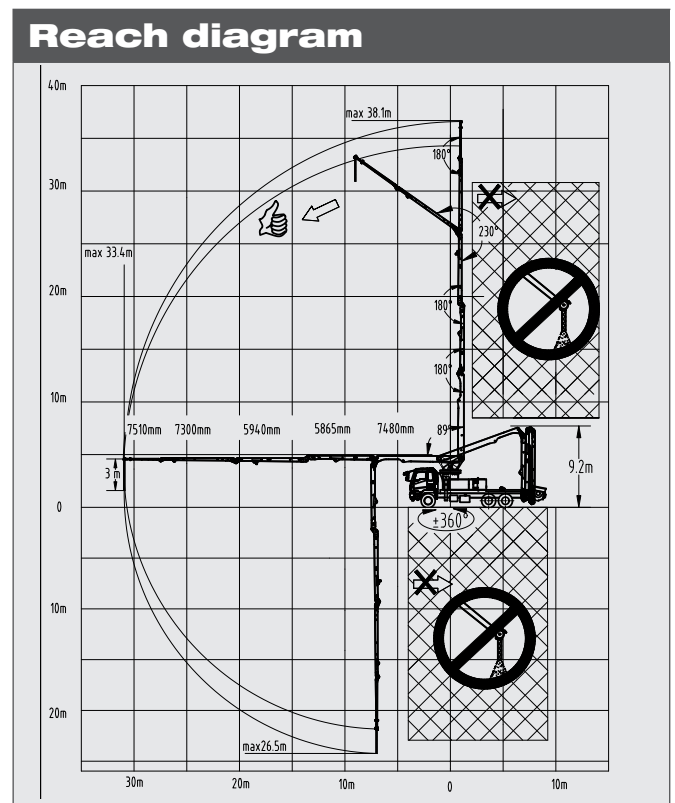
Truck-mounted concrete pump

SY39 RZ5-165



Note: Standard version. Dimensions and weights depend on truck, pump model and equipment. For illustration only.

Technical data			
Boom	Folding system	5-arm RZ	
	Vertical reach	38.1 m	
	Horizontal reach	33.4 m	
	Reach depth	26.5 m	
	Unfolding height	9.2 m	
	End hose length	3 m	
Support	Outrigger spread front / rear	6.1 m / 7.4 m	
Dimensions	Overall length	11.2 m	
	Width	2.5 m	
	Height	3.9 m	
Core pump		Rod side	Piston side
	Output	163 m ³ /h	96 m ³ /h
	Pressure	70 bar	120 bar
	Strokes/min	35	20
	Delivery cylinder Ø	230 mm	
	Stroke length	1900 mm	



Boom delivery line max. 85 bar. All data max. theor.
Support width based on center of support leg.
OSS left and right possible

Standard Equipment SY39 RZ5-165

Chassis	Towing eye	Support	Boom pedestal (X-type outrigger and swing out legs)
	Transfer Gear Box		OSS one side support (assistance device)
Cleaning	Water hose 10 m with holder	Safety	Support plates (4x) in open magazine
	Water pump 50 l/min 12 bar		Chassis horn via remote control on hopper
	Water tank 600 l		Cleaning steps, right & left side
Delivery line	2-layer delivery line – DN 125, 5.5"	Safety	Handrail on rearstep
	End hose 3 m DN 125, 5.5"		Horn at the boom, button on hopper
Hopper	Agitator safety switch off, lever switch		Miscellaneous
	Central auto lubrication hopper	Painting: arm assembly and delivery line in RAL 9003 Signal white	
	Concrete hopper with agitator	Painting: pedestal and hopper in RAL 9003 Signal white	
	Hard metal wear parts kit	Road approval KIT	
	Hopper cover, foldable	Side deck aluminum	
	Switchover cylinder diameter = 100 mm	Stowage box	
	Vibrator on hopper grid radio remote/on-site controlled	Underrun protection, rear, foldable with integrated lighting	
Lighting	Side marker lamps	User manual and spare part list	
	Working light for illuminating hopper	Interior panels on platform	
Pump	Delivery cylinder chrome-plated		
	Delivery piston premium		
	Linear measurement system		
Control System	Radio remote control incl. spare transmitter		
	30 m cable for wired operation		
	SANY SYSD 10" user interface display		
	SANY SYMC control system		

See quotation for exact serial delivery scope.

Materials and specifications are subject to change without further notice in accordance with our continuous technical innovations. Photos and illustrations may include additional equipment.
All rights reserved. 2603

PMO Putzmeister Oceania Pty Ltd.

10-12 Kimpton Way · Altona VIC 3018 · Australia
Phone: +61 3993 1420 0 ·
oceania@putzmeister.com · www.putzmeister.com