



Putzmeister

Modular construction 4.0.
At the precast plant of Deutsche Modulhausfabrik GmbH (DMF), employees are reconceptualising construction with the production of Lechner cubes.

Have you ever concreted a whole apartment in one go? The DMF precast plant, located in Uehlfeld, Germany, is not just producing precast parts but complete living systems.

The mixing plant feeds the ready-for-use concrete directly into the extension hopper. The concrete pump delivers the concrete via delivery lines and diversion valve to individual manual rotary distributors. Lines and pipes are installed on a walkway. To switch between the rotary distributors, the concrete is pulled back to the diversion valve and then switched over.

The concrete was previously transported to the building with a bucket conveyor and filled into a buffer storage tank located there. A concrete pump distributed the concrete to the rotary distributors.

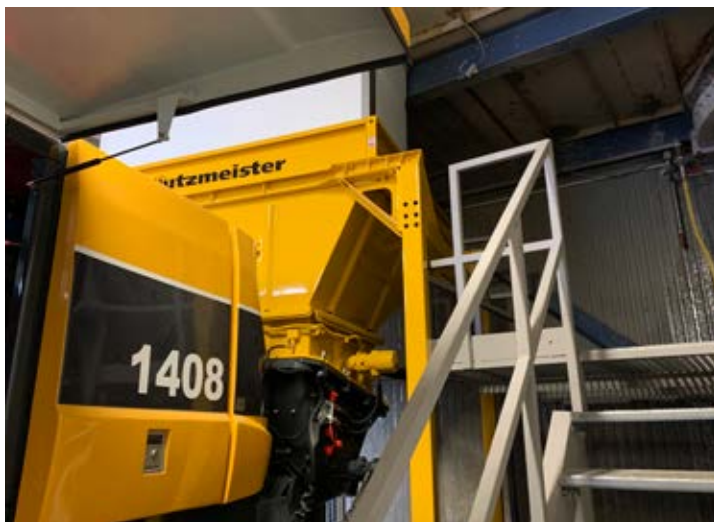
Industrialisation of residential building construction Deutsche Modulhausfabrik GmbH precast plant



Two rotary distributors above formwork ▶

▼ Stairs to extension hopper for easy cleaning

▼ Stationary concrete pump with extension hopper under mixing plant



Advantages

Combining the experience of DMF in precast construction with Putzmeister's expertise in concrete pump technology resulted in the following benefits:

- **Faster delivery of concrete without bucket conveyor and intermediate storage**
- **Extension hopper with capacity for two batches**
- **Continuous and homogeneous formwork filling with efficient pump solution**
- **Reduction of the noise emissions in the hall**
- **Concrete transport in a closed system**
- **Overall improvement of working conditions in the hall**



▲ Pipeline on walkway with diversion valves to switch over to the individual rotary distributors and a hydraulic power pack (on the right) for operating the diversion valves

◀ Rotary distributor being fitted above formwork

Machines / equipment

BSA 1408 E stationary concrete pump

Extension hopper with a capacity of 3.8 m³

Hydraulic power pack

Manual rotary distributor

Delivery line system



Putzmeister Concrete Pumps GmbH

Max-Eyth-Straße 10 · 72631 Aichtal / Germany

P.O. Box 2152 · 72629 Aichtal / Germany

Tel. +49 (7127) 599-0 · Fax +49 (7127) 599-988

pit@putzmeister.com · www.putzmeister.com

