

ergonic[®]
inside 3


Putzmeister



Ergonic[®] 3 – Modern concrete pumping:
Precise, intuitive and reliable!

User-friendliness made by Putzmeister



Ergonic® 3 – highlights

**JUST AS EASY TO
HANDLE AS ALWAYS –
AND MORE INTUITIVE
THAN EVER BEFORE**

ERGONIC® 3

Pumping made smart

If our concrete pumps form the heart of Putzmeister machines, then the Ergonic® 3 system is the brain.

As a switching centre, the micro-processor-supported control systems regulate the functions of concrete pumps, mixers and placing booms.

Always by your side – Ergonic® inside

- # **EBC – Ergonic Boom Control** Controls and regulates the movement of the placing booms, ensuring an increased placement rate and simple and safe operation.
- # **EPS – Ergonic Pump System** Takes over control of the concrete pump for all-round optimised pumping.
- # **EOC – Ergonic Output Control** Regulates the optimum motor speed, ensuring that the concrete pump operates smoothly with fuel efficiency and low wear.
- # **ESC – Ergonic Setup Control** The safety system regulates the interaction between the flexible support and working areas.
- # **EMC – Ergonic Mixer Control** Operates the mixer drum by radio remote control, including adding water and cleaning.

The new Ergonic® 3 – clear, fast and safe

- # **Continuous operating concept** for all Putzmeister products with the same functions and displays – whether on the radio remote control or the Ergonic Graphic Display (EGD).
- # **Intuitive work and quick reactions** thanks to a clear menu structure and intuitively arranged functions.
- # **Full overview** of machine status on the radio remote control and EGD (incl. valves, sensors, LEDs on fuses).
- # **Detailed fault management:** Faults are easy to detect and rectify – even without a Putzmeister technician.
- # **Multi-level emergency operation** keeps the machine running even in the toughest conditions and in virtually every case.



ergonic® inside 3

The best of two worlds

Ergonic® 3 is the logical evolution of Ergonic® 1 and Ergonic® 2.

Proven features are maintained, others developed further and additional, new and future-oriented functions are integrated.

The result has many benefits:

- # Experienced Putzmeister customers quickly become familiar with operation, making the switch incredibly easy.
- # New customers will need little training or instructions since operation is so intuitive.
- # Once learned, a wide variety of machine models can be operated.

SIMPLE OPERATION

Intuitive and almost self-explanatory, including for less experienced machine operators

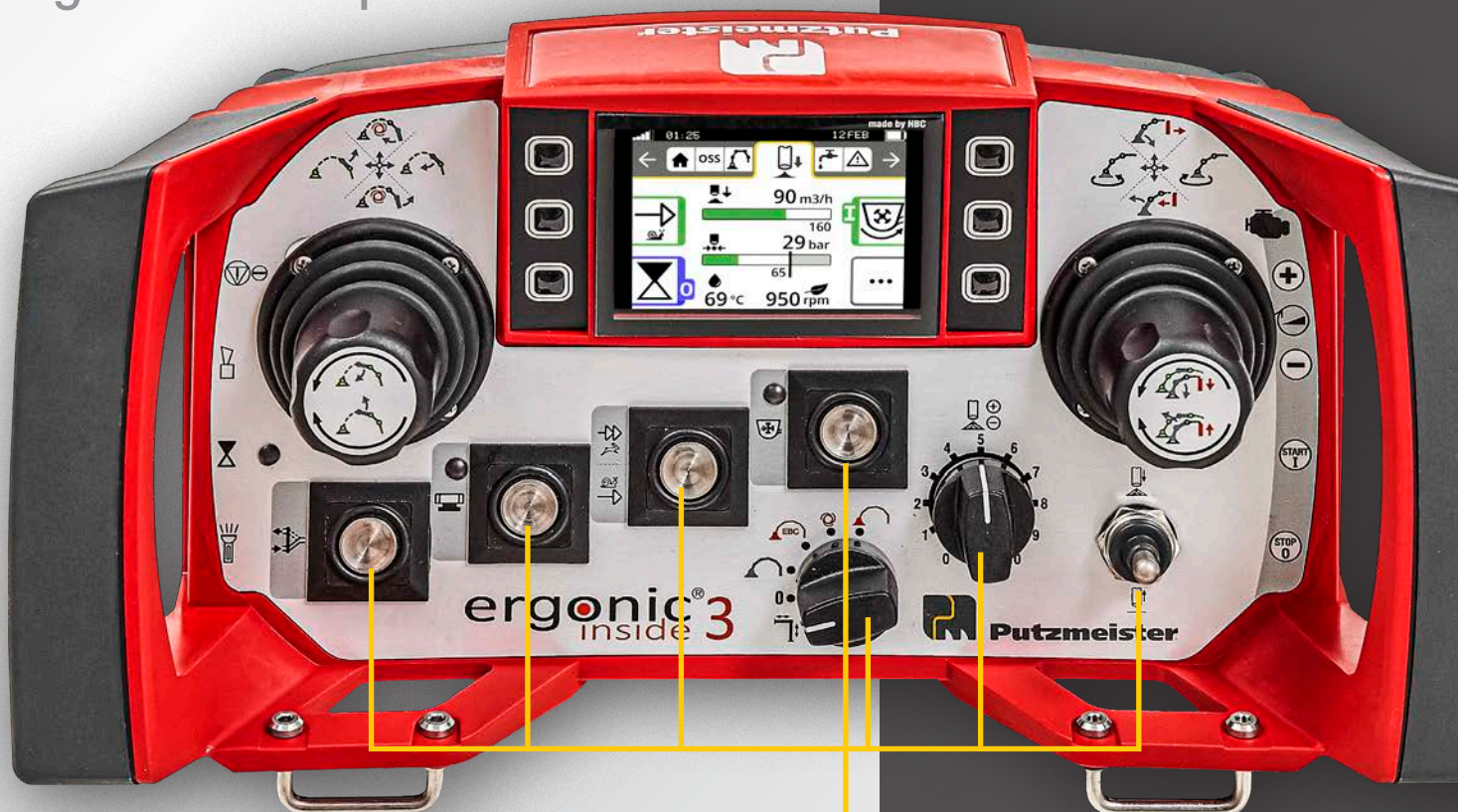
RELIABLE OPERATION

With a continuous operating concept and comprehensive fault management for a greater scope of action

DETAILED FAULT MANAGEMENT

To prevent downtime, there are comprehensible fault messages with suggested solutions – the job can almost always be completed with manual control.

Ergonic® 3 – operation



WORKING WITH A **SMILE:** INTUITIVE, EXACT AND EASY

Concrete action

Basic concrete pump functions can also be controlled via hardware buttons, independent from operation via the display.

Quick-access buttons lead directly to results and are easy to operate even while wearing gloves.

Dedication in every respect

Ergonic® inside means that the machines are quickly ready for use and they work with high power, fuel efficiency and low wear.

And most importantly for machine operators: Work becomes easy!

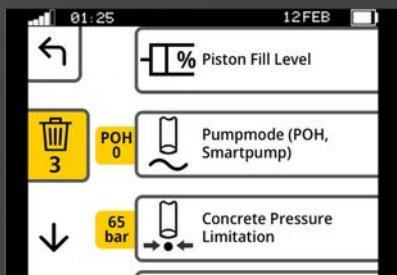


Keeping an overview – in every situation

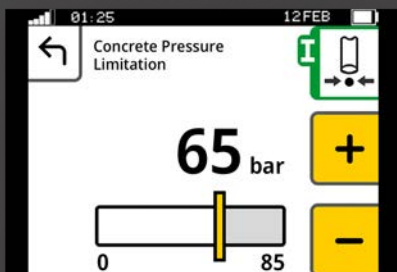
- # The “static” menu bar guides users through the menu – with no chance of “getting lost”.
- # Neatly and intuitively arranged functions.
- # Simple menu structure with a maximum of two submenu levels.
- # Main menu with all standard functions and additional details in submenus.



Main menu



Submenu level 1



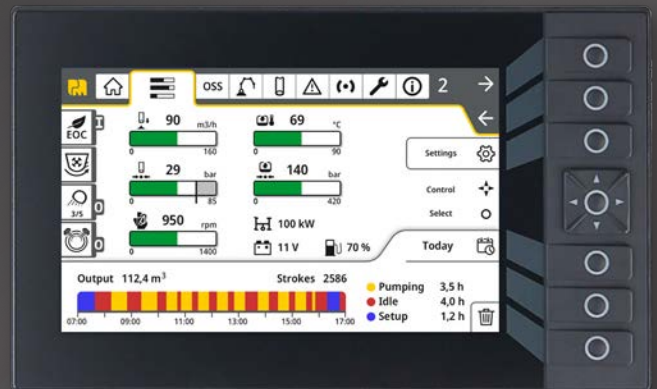
Submenu level 2

Consistent concept on all “switching centres”

- # The menu structure is nearly identical on the remote control and the graphic display.
- # Hardware and software are perfectly matched at all operating positions.
- # The same intuitive operation on all Putzmeister products – without requiring a lot of training.



The additional screen on the control cabinet uses the same concept and offers a variety of information, settings and options.



Detailed setting options and a great deal of information makes it easier to understand the device.

CONCRETE

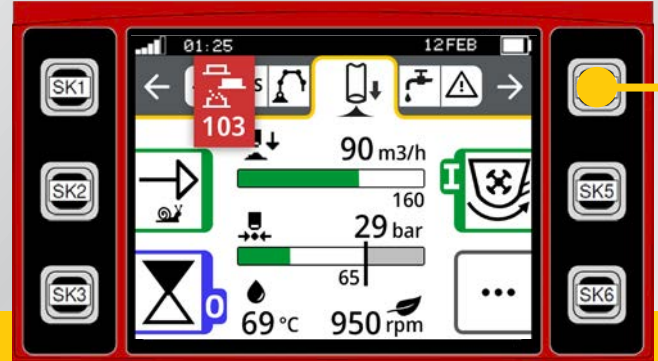
Robust switches for basic functions ensure easy handling.

INTUITIVE

Easily comprehensible functions and work steps ensure focused working.

PRECISE

With the Ergonic® 3, you are using the powerful pump optimally and controlling the boom extremely precisely.



NO DOWNTIME

SIMPLE FAULT MANAGEMENT – FAST HELP

- # If worst comes to worst, machine operators receive a clear and comprehensible fault message that includes possible causes.
- # The exact installation position of the affected component is specified with images and clear descriptions. This makes it easy to detect and replace defective fuses for example.
- # A great variety of suggested solutions are stored in the system. Machine operators can make many settings themselves directly on the machine to prevent a standstill.
- # Emergency operation with manual control enables machine operators to safely complete a job they have already started.

ERGONIC® 3

ALWAYS READY FOR THE FUTURE

A FUTURE-ORIENTED SOLUTION

Interfaces for future expansions are already set up and software updates are easy to perform. So your Ergonic® 3 is always up to date.



Clearly guided fault management on the radio remote control and the graphic display



REACTIVE

The comprehensive and reliable fault management perfectly prevents unwanted machine downtime.



SERVICE-FRIENDLY CONCEPT

Services can be access quickly and implemented efficiently to achieve maximum availability. That is true for the entire Putzmeister fleet.

Ergonic® 3 – work with a smile

Your benefits at a glance

- **Easy, intuitive and precise operation** – With a clear menu structure and intuitively arranged functions, work becomes quick and precise
- **Routine and reliable operation** – Thanks to the continuous operating concept for all Putzmeister products with the same functions and displays – whether on the radio remote control or the Ergonic Graphic Display (EGD) – machine operators can fully focus on their work.
- **Working without downtime** – Thanks to the intelligent fault management, faults are easy to detect and rectify – even without a Putzmeister technician. The multi-level emergency operation keeps the machine running even in the toughest conditions and in virtually every case.
- **Working with a smile** – All the positive experiences machine operators have made with our control systems are also found in the Ergonic® 3. What's new: Hardware and software are perfectly matched. The "static" menu bar comprehensively guides users, making it almost impossible to "get lost" in the menu. The menu structure with a maximum of two submenus is simple and clear. All standard functions are already contained in the main menu. This means machine operators can keep an overview in every situation.



Putzmeister Concrete Machines Pvt. Ltd

Plot No. N4, Phase 4, Verna Industrial Estate, Salcette - Goa 403 722. INDIA
Tel.: +91 (832) 6696 000 · Fax: +91 (832) 6696 300 WhatsApp: +91 91585 34123
www.putzmeister.com · For all your support needs, contact.india@putzmeister.com

Regional Offices: NORTH: 011 4200 5600, EAST: 033 6614 2525,
WEST: 022 2636 0181 / 82, SOUTH: 040 4010 1015

Service Call Centre: NORTH: 99100 25721, EAST: 84200 59909,
WEST: 90821 04420, SOUTH (AP, TN): 78939 22727,
SOUTH (KA, KL): 90080 65829

