

**SANY**

# TRUCK-MOUNTED CONCRETE PUMPS



**POWERFUL. EFFICIENT. ROBUST.**

Non-CE version  
non EWR, no CE marking

**SANY**



## **SURPRISING VALUE**

**STRONG  
POWER**

**FLEXIBLE  
SERVICES**

**BEST-SELLING  
CONCRETE PUMPS**

**BEST  
PERFORMANCE**

**LATEST  
TECHNOLOGY**

**SIMPLY  
WORKING**

## SANY GLOBAL

**33 745**  
EMPLOYEES

**The SANY Group –  
Construction machinery manufacturers**

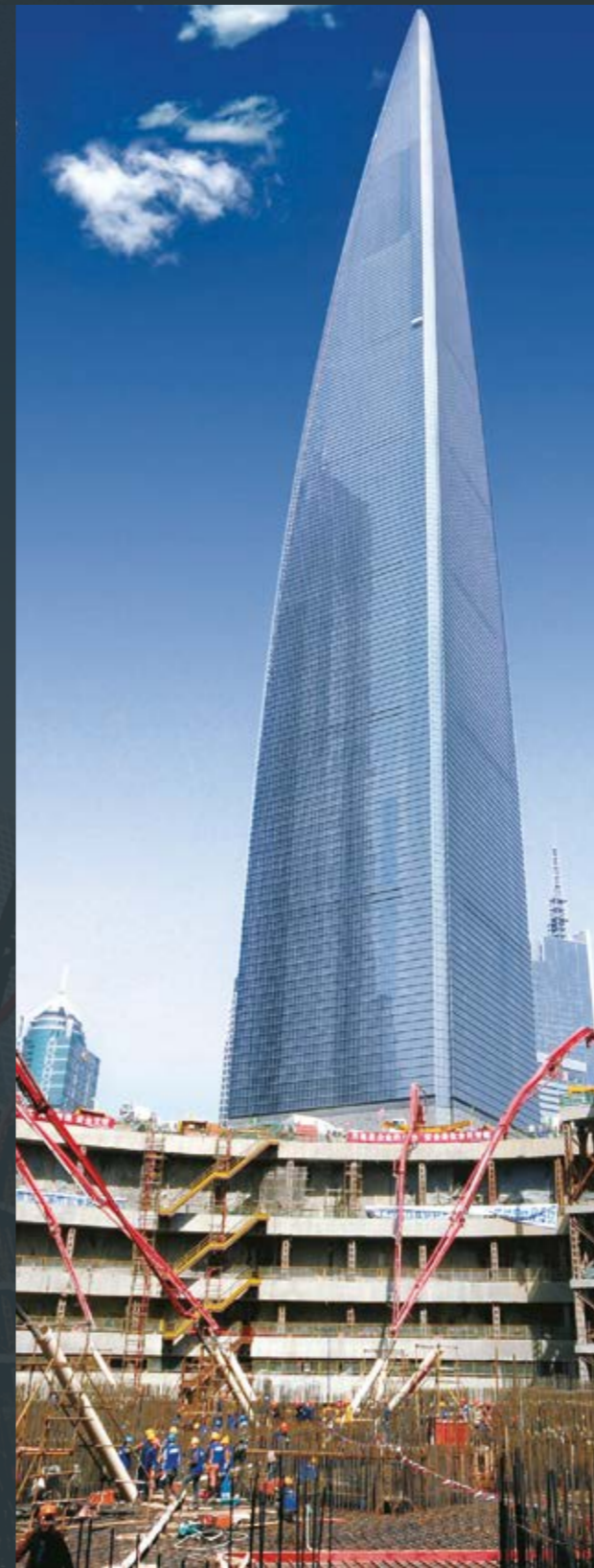
- Founded in 1989
- Headquarters in Changsha, China.
- 33 745 employees
- Putzmeister is part of the SANY Group since 2012

**MORE THAN  
3 000**  
TRUCK-MOUNTED  
CONCRETE PUMPS  
SOLD PER YEAR

**SANY truck-mounted concrete pumps**

- No. 1 in China: 3 000 truck-mounted concrete pumps sold per year
- Best-selling in over 20 countries worldwide – No. 1 in volume sales
- Largest production facility for concrete pumps with lean processes and standardized products
- 35 000 concrete pumps sold during the last 10 years

**35 000**  
CONCRETE PUMPS  
SOLD DURING THE  
LAST 10 YEARS



## SANY VALUES

**SANY truck-mounted concrete  
pumps offer simply more.**

### Reliability

- Respectable quality
- Robust and heavy duty machines
- Strong performance even with high challenges

### User-friendliness

- High standard tailored to customer requirements
- Meeting international standards
- Parts and service supported by Putzmeister

### Best price-performance ratio

- Low-cost entry-level models through lean, efficient series production
- Complements existing pump fleets
- Efficient series production ensures fast delivery

## QUALITY CHANGES THE WORLD – THE WORLD'S BIGGEST CONCRETE PUMP FACTORY

At SANY's main plant „lean production“ is redefined: The automated production line increases the quality of high-quality assembly by using an MES (Manufacturing Execution System) production management system.

A fully automated distribution and warehousing system enhances accuracy and efficiency. Robotic welding systems ensure ultra-precise, uniform welds.

Every step in the manufacturing process has been refined to meet high quality expectations of international customers and to offer added value.

Consequently, the Chinese engineered SANY products are not only No. 1 in their domestic market, but also the best-selling truck-mounted concrete pumps in the world.



# STRONG POWER

**Robust heavy duty design gets the job done: SANY machines prove their reliability even under the most difficult conditions. It is not for nothing that SANY is the market leader in China.**

The SANY product quality has been proven in the global markets. Continuous improvement and testing under the hardest conditions guarantee high lifetime expectancy.

The powerful truck-mounted concrete pumps with an output of up to 160 m<sup>3</sup>/h and 85 bar pressure perform reliably on almost every jobsite. Even on coarse concrete, they show their powerful side.

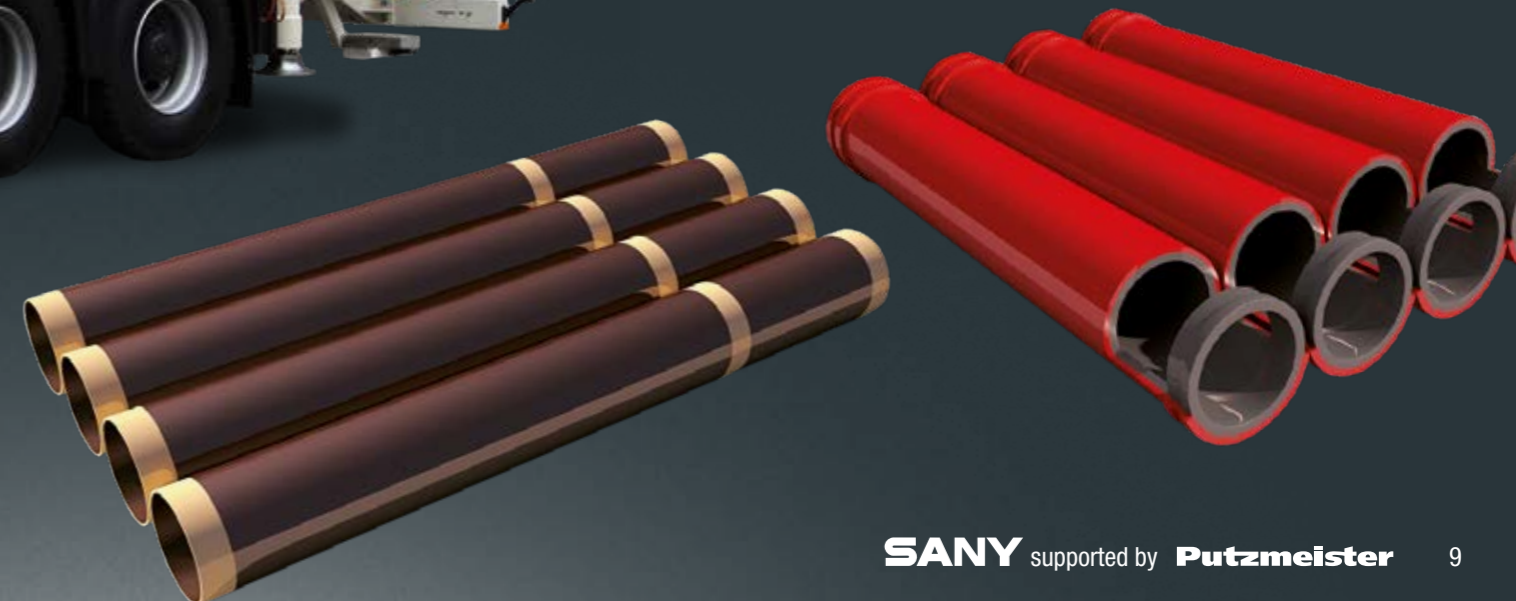


# BEST PERFORMANCE

SANY applies in-house manufactured components and parts produced by renowned suppliers such as Bosch Rexroth, Danfoss, Hawe and HBC. This well-balanced mix ensures low service costs and high uptime – all in all, this offers added value throughout the entire life cycle of the machine – and unbeatable advantages for our customers.

SANY stands for reliable, robust parts and components. To this end, the entire production process of its pipe and component plants is strictly monitored - and thus meets the global quality standard.

Carbide wear parts, two-layer tubes and the Single Piston are standard at SANY. This offers a long service life and maximum economic efficiency.



# FOR DEMANDING TASKS...

**SANY machines offer comprehensive equipment as standard, that meet almost all requirements.**

All SANY truck-mounted concrete pumps are specified to meet the needs of customers all over the world. Convenience starts with a machine that is ready to pump. This means that every SANY truck-mounted concrete pump is fully operational right from the start when it leaves the factory.

What SANY customers appreciate? On the one hand, the unique price-performance ratio based on thoroughly solid quality. On the other hand, these benefits:

- **Availability** of predefined chassis types
- **High-quality standard configuration** with SANY standard pistons, double layer SANY pipes, carbide wear parts and much more

# ...YOU NEED A FIRST-CLASS PARTNER

**Quality changes the world – for the customers' benefit.**

SANY is the No. 1 in China and also offers the right solution for customer requirements worldwide.

Customers can rely on this: SANY truck-mounted concrete pumps comply with the regulations and safety standards of international markets.



# STATE OF THE ART TECHNOLOGY

**“SANY supported by Putzmeister” meets the global market standards:**

- **Open-loop hydraulics** – effective oil management, simple components and easy to service
- **Concrete hopper, whether the back end kit, the agitator or the S-tube** – less wear, high reliability and good parts availability
- **Variety of folding variants** – easy to operate Z- and RZ-fold from 4 to 6 boom segments
- **Flexible support system** – OSS support ensures the best combination of support width and boom reach
- **Intuitive control system** – colour display provides current pressures, temperatures and allows quick trouble shooting



## FOR EASY WORK

### First-class solutions from SANY

The SYMC SANY Motion Controller is a good example for an advanced, intuitive SANY control system. The SYMC is easy to apply: With this unique features, the operator is able to diagnose all in- and outputs via the SANY control box to identify potential faults.

The SYMC controller has been designed for self-diagnosis and to do maintenance of the machine on site – and it is so easy to use.

With regards to servicing, all SANY machines are equipped with an easy piston exchange function (dual piston retract function) to accelerate the changing or cleaning of the pistons.

**An intuitive, standard HBC radio remote control** for basic functionalities allows to operate the truck-mounted concrete pump safely and efficiently – even from a distance.

**The SANY boom** has the ability to lock the first and the first and second arm for working safely even on tightest job sites. In case of emergency, the boom with the HAWE-valves is able to finish the job via a **separate emergency control**.

The support legs are easy and intuitive to operate by hand lever. At the same time, the support system complies with all applicable standards to guarantee safe working.





**SY25 Z4-150**

**SY38 Z5-200**

**SY43 RZ5-200**

<b>Boom</b>			
Folding system	4-arm Z	5-arm Z	5-arm RZ
Vertical reach	24.6 m	38.0 m	43.3 m
Horizontal reach	21.0 m	34.0 m	38.3 m
Reach depth	11.6 m	21.5 m	25.5 m
Unfolding height	6.2 m	11.3 m	13.9 m
End hose length	3 m	3 m	3 m

<b>Support</b>				
Outrigger spread	front	5.2 m	6.2 m	9.3 m
	rear	3.4 m	7.1 m	9.6 m

<b>Dimensions</b>			
Overall length	10.2 m	11.7 m	12.5 m
Width	2.5 m	2.5 m	2.55 m
Height	3.6 m	3.9 m	4.0 m

<b>Core pump</b>			
Output	120 m <sup>3</sup> /h	160 m <sup>3</sup> /h	160 m <sup>3</sup> /h
Delivery pressure	70 bar	85 bar	85 bar
Strokes/min	30	26	26
Delivery cylinder Ø	230 mm	260 mm	260 mm
Stroke length	1600 mm	1900 mm	1900 mm

Note: Standard version. Dimensions and weights may vary depending on vehicle, pump and equipment. Illustrations contain optional equipment.



**SY49 RZ5-200**

**SY56 RZ6-200**

**SY62 RZ6-200**

<b>Boom</b>			
Folding system	5-arm RZ	6-arm RZ	6-arm RZ
Vertical reach	48.6 m	56.0 m	61.1 m
Horizontal reach	43.6 m	51.0 m	56.7 m
Reach depth	30.8 m	36.6 m	41.7 m
Unfolding height	13.9 m	15.2 m	16.2 m
End hose length	3 m	3 m	3 m

<b>Support</b>				
Outrigger spread	front	8.6 m	9.5 m	11.4 m
	rear	9.0 m	12.7 m	13.9 m

<b>Dimensions</b>			
Overall length	12.2 m	14.1 m	15.8 m
Width	2.55 m	2.55 m	2.55 m
Height	4.0 m	4.0 m	4.0 m

<b>Core pump</b>			
Output	160 m <sup>3</sup> /h	160 m <sup>3</sup> /h	160 m <sup>3</sup> /h
Delivery pressure	85 bar	85 bar	85 bar
Strokes/min	26	26	26
Delivery cylinder Ø	260 mm	260 mm	260 mm
Stroke length	1900 mm	1900 mm	1900 mm

Note: Standard version. Dimensions and weights may vary depending on vehicle, pump and equipment. Illustrations contain optional equipment.

**SURPRISING VALUE**

# RELIABLE SERVICES

- The global Putzmeister service infrastructure offers optimum service and spare parts supply for the SANY concrete pumps – supported by Putzmeister
- Standardized, thoughtful services for increased productivity, reduced operational costs and high safety
  - Maintenance and repair work
  - High availability of spare parts via the Putzmeister and SANY service network
  - Training by experienced Putzmeister trainers for SANY machine support



SANY machines are the **best-selling concrete pumps in the world**, by far not only because of the **financial and service flexibility**, but also because of their **proven power** under tough conditions: SANY concrete pumps guarantee **best performance**. The **SANY technology is state of the art and yet works very simply**.

This gives you amazing added value in your daily work.



**SANY** supported by **Putzmeister**

# SANY

**Putzmeister Concrete Pumps GmbH**  
Max-Eyth-Straße 10 · 72631 Aichtal, Germany  
P.O.Box 2152 · 72629 Aichtal  
Tel. +49 (7127) 599-0 · Fax +49 (7127) 599-520  
pmw@putzmeister.com · www.putzmeister.com

Materials and specifications are subject to change without further notice in accordance with our continuous technical innovations. Photos and illustrations may include additional equipment. All rights reserved. © by Putzmeister Concrete Pumps GmbH 2023 2023/04 SY0071 EN (MEWA)