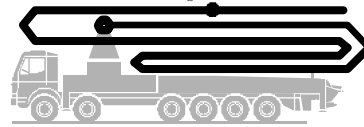


# Truck-mounted concrete pump

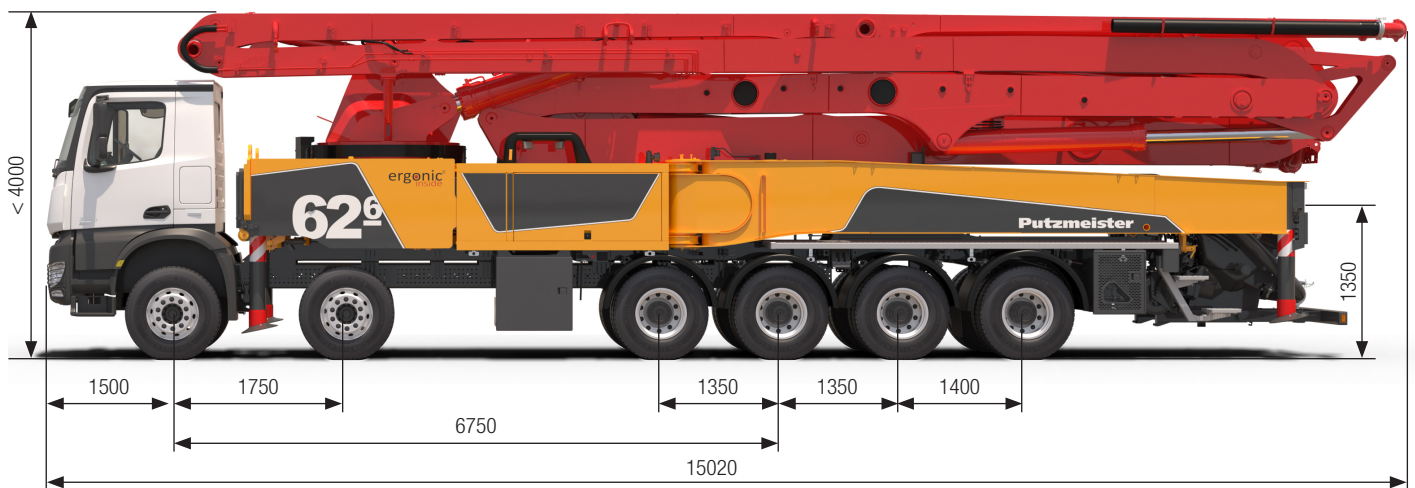
## BSF 62-6.16 H

Output up to 190 m<sup>3</sup>/h  
Delivery pressure up to 130 bar\*



.16 H LS  
.17 i LS  
.19 i LS

**ergonic<sup>®</sup>**  
inside 3



Note: Serial version. Dimensions and weights depend on truck.  
Dimensions in mm, MB-Arocs 6553 12x4 R6750 E6 as example.  
For illustration only.

## Technical data

| Boom M 62-6      |       |   |                         |
|------------------|-------|---|-------------------------|
| Sections         |       |   | 6                       |
| Reach height     |       | m | 61.1 <sup>1</sup>       |
| Horizontal reach | gross | m | 57.1                    |
|                  | net   | m | 52.4                    |
| Reach depth max. |       | m | 44.3                    |
| Unfolding height |       | m | 23.0                    |
| End hose length  |       | m | 3                       |
| Folding system   |       |   | RZ                      |
| Delivery line    |       |   | DN 125/117 <sup>2</sup> |

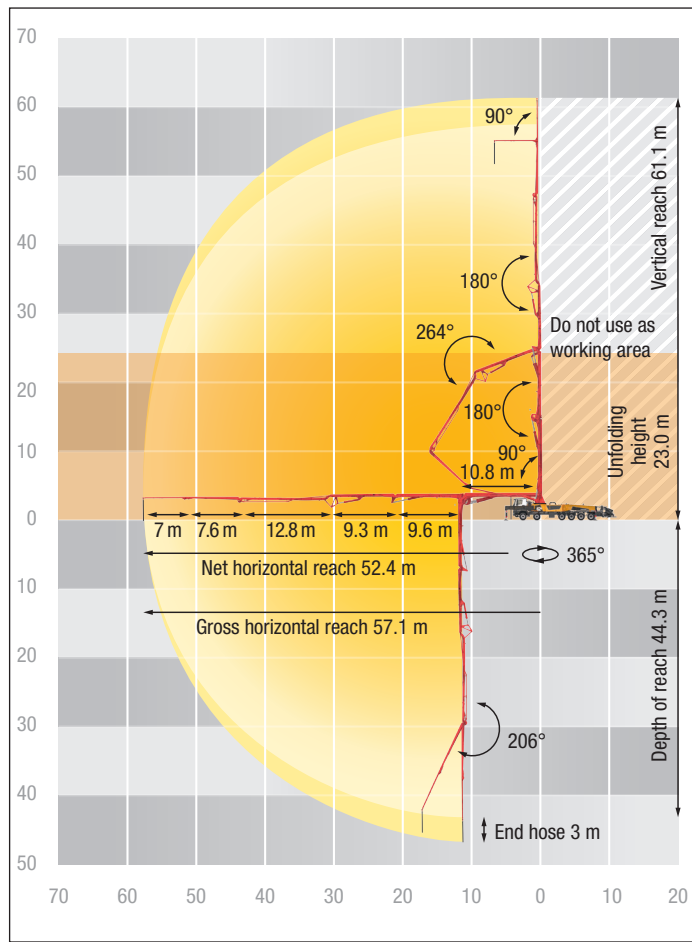
| Pump        |                   | BSF               | .16 H | .16 H LS | .17 i LS | .19 i LS |
|-------------|-------------------|-------------------|-------|----------|----------|----------|
| Rod side    | Output            | m <sup>3</sup> /h | 160   | -        | -        | -        |
|             | Delivery pressure | bar               | 85    | -        | -        | -        |
|             | Strokes           | 1/min.            | 31    | -        | -        | -        |
| Piston side | Output            | m <sup>3</sup> /h | 108   | 160      | 170      | 190      |
|             | Delivery pressure | bar               | 130   | 85       | 85       | 85       |
|             | Strokes           | 1/min.            | 21    | 26       | 27       | 30       |
|             | Delivery cylinder | Ø mm              | 230   | 250      | 250      | 250      |
|             | Stroke            | mm                | 2100  | 2100     | 2100     | 2100     |

<sup>1)</sup> with endhose elbow

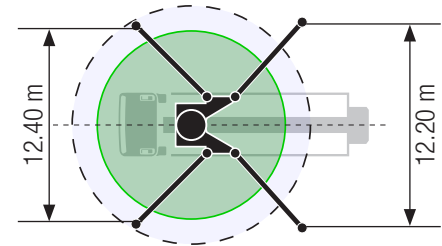
<sup>2)</sup> Sections 1+2 DN125, sections 3 to 6 DN117

\*) Delivery line boom max. 85 bar.  
All data maximum theoretical.

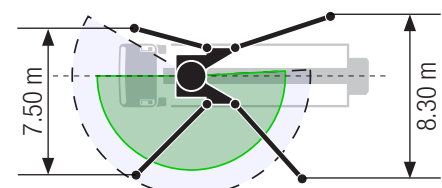
## BSF 62-6 Reach information diagram, support



### Standard – Full support



### OSS – One-side support



Dimensions can differ depending on configuration.  
Support width based on center of support leg.

## Delivery scope Standard Line

### Support

Full support system  
Support plates (4x), in 2 magazines

### Control systems

Agitator, controllable via remote control or local  
EOC 2.0 (Ergonic Output Control)  
Ergonic 3 control system  
Ergonic Graphic Display 9.7" incl. Ergonic diagnosis interface  
Radio remote control with display

### Hopper

Agitator rotation automatic, dep. on pump direction  
Agitator safety switch off (RFID)  
Central hopper lubrication, electric  
Delivery cylinder, chrome-plated  
Hinged elbow with cleaning port  
Rubber collar on concrete hopper  
Spectacle wear plate DURO 22

Steps left and right, zinc-plated  
S-valve transfer switchover fast/slow  
Wash-out port lid with locked slide pin

### Cleaning

Cleaning hose 8 m + 2 m incl. bracket and nozzle  
Compressed air connection, rear side  
Connection for water tank filling, both-sided  
Container for sponge balls  
Operating position at hopper to drain water pipe  
Water outlet on hopper, for small quantities (1/2")  
Water pump, 160 l/min 25 bar  
Water tank 700 l

### Delivery line

Deck delivery line in boom delivery line quality  
Delivery line PROLINE 1000 (1-layer)  
End hose 3 m DN125

### Safety

Connections for hydraulic emergency supply (boom)  
Guardrail right side  
Mushroom button for horn, yellow  
Towing eye

### Lighting

Control points lighting, LED  
Hopper lighting, LED  
Light for illumination pump and water box, LED  
Lighting of control box, LED

### Miscellaneous

Delivery note box plastic  
Hydraulic hose for replacement in hose pack  
Operating instruction and spare parts manual (1x paper, 1x CD-ROM)  
Paintwork Putzmeister Standard  
Tool kit