



Putzmeister



BSF 42-5 Truck-Mounted Concrete Pump

New generation high performance machine

The New Substructure with Intelligent Technology

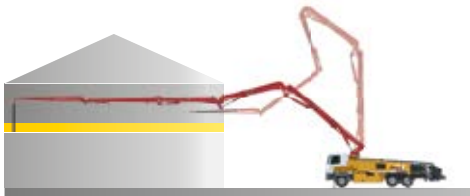


The new I frame concept offers improved torsional properties in comparison to the fixed frames. It has the same elasticity as the chassis. Driving thus becomes a pleasure and service life of the vehicle is extended.

Maintenance free components, the comprehensive bolted concept as well as the consistent use of standard component, make the operating and maintenance costs pleasantly unassuming and easy to calculate.

Unique Flexibility and Reach!

Putzmeister



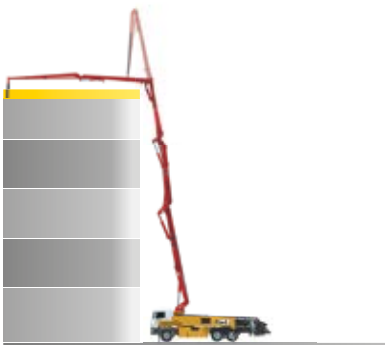
RZ-Fold with 5-arm

Unbeatable manoeuvrability with RZ-Fold system

**Large horizontal, vertical and downward reach –
5 flexible short arms use the working space optimally**

The 5 arm boom in the RZ-Fold system has an impressive action radius: 41.6 m vertical reach for all requirement in building construction; 30.7 m reach depth is considerably more than with a comparable 4-arm version. Concreting without dead zones directly from the driver's cab with a forward horizontal reach of up to 34.7 m.

The mobile 5-arm boom provides the machine operator with more manoeuvrability under difficult conditions, e.g. in low buildings, tight inner city areas or in the event of obstacles between the truck and the site of concrete placement.

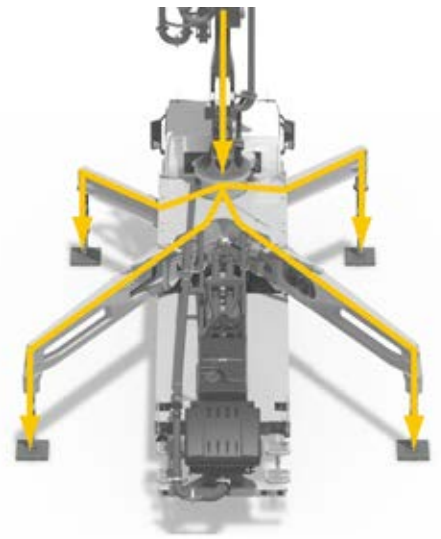


RZ-Fold at work

Cross Outriggers - for a longer life of the chassis

The truck is protected from damage by the transmission of forces to the support legs.

The forces from the boom are transmitted directly to the four support legs. The truck chassis is not used for force transmission and is therefore not loaded with torsion. This ensures not only quieter pumping operation but also a long service life of the whole truck.



High-quality wear components ensure machines have a long service life



The S-Valve for Placing Difficult Concrete

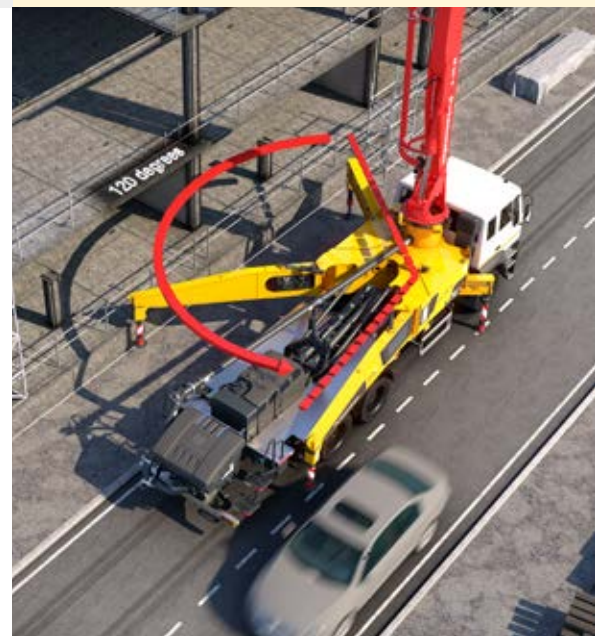
- The S-Valve that is manufactured out of thick-walled special cast steel is designed for difficult, abrasive concrete.
- The automatic wear ring compensates for the uniform wear of parts and therefore prolongs service life.
- The wear ring optimally seals the system. This prevents the bleeding out of concrete fines and effectively reduces the danger of blockages.
- All parts of the S-Valve are easy to change: no need to dismount the hopper for changing wear parts.

OSS and Radio remote features

Save space-be safe

The cross support developed by Putzmeister which is stable and reliable, saves time and space without compromising on safety.

Construction sites generally have restricted set-up conditions because they are located in urban areas or along busy roads. Therefore, with the optional OSS (One Sided Support), the telescopic support legs can be securely placed in minimal spaces between obstacles and hence reduce the width by 1/3 from the original 7 m. An important advantage of the OSS is that the full use is made of the net reach for the fully supported side.



Radio remote control with display

- * More user friendly interface
- * Precise Handling
- * Accurate pumping & boom control
- * Well defined controls for smoother operations.



BSF 42-5 Key Benefits

- Improved control of boom, due to reduced boom weight
- One Sided Support
- Optimized for service
- Chrome plated delivery cylinder
- Grab rails on both sides
- Hinged elbow with cleaning port
- Non-skid platform
- Environment-friendly
- Rubber collar at hopper
- Advantages of TRDI
- Remote control with 40 m cable and radio remote
- Improved safety and compliance
- Automatic greasing system
- Standard delivery line boards of 90° and 45° with extended collars for longer service life.
- Support plates for outrigger legs in easy accessible holder.

Unique Putzmeister Cleaning Lid!

Easy Maintenance!



Upto 50% Oil Savings!

Life Long Savings on Every Oil Change!

OTHER BRANDS
550 Lts



Putzmeister
265 Lts

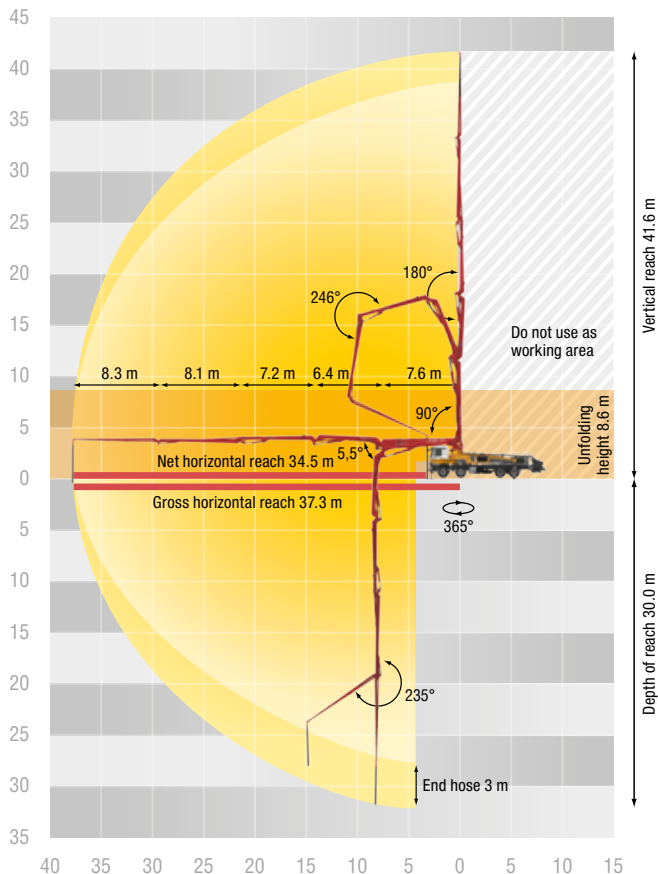


Technical Specifications

Pump	BSF 42-5.10 H
Piston Side	
Output	95 m ³ /h
Delivery Pressure	82 bar
Delivery Cylinder	230 mm
Stroke of Delivery Cylinder	1400 mm
Strokes / Minute	27
Hydraulic Ratio	4.3
Transfer Tube	S Transfer Tube (S 2318LS)
Hopper	RS 909 Approx. 600L
Filling Height	Approx. 1.35 m
Control System	Free Flow Hydraulics (FFH - EL)

Dimensions, weights and engine power depend on truck model.

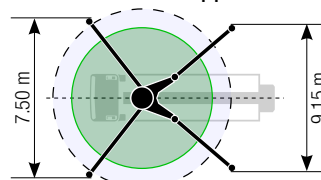
Reach Diagram



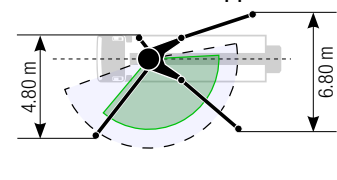
Boom

Reach Height	41.6 m
Horizontal Reach	37.3 m
Reach Depth	max. 30 m
Unfolding Height	8.6 m
Delivery Line	DN 125/5.5
Slewing Range	365°
Number of Arms	5
Folding System	RZ Fold
Hydraulic Control	Compact Boom Control (CBC)
Remote Control	Radio remote control with display
Support Front: Rear:	Telescoping, Diagonally Swinging

Standard – Full support



OSS* – One-side support





Putzmeister
Genuine Service
and Parts

#1 reason customers choose Putzmeister
AFTERSALES SUPPORT

Your Putzmeister Machine is in the best hands with our team. We ensure a high level of service, maintenance and genuine parts; we take care of your machine like no one else. Why? **We know your machine better than anyone else!**



Trained service experts ensure correct diagnosis and service



Genuine Putzmeister spare parts for long wear life and superior performance



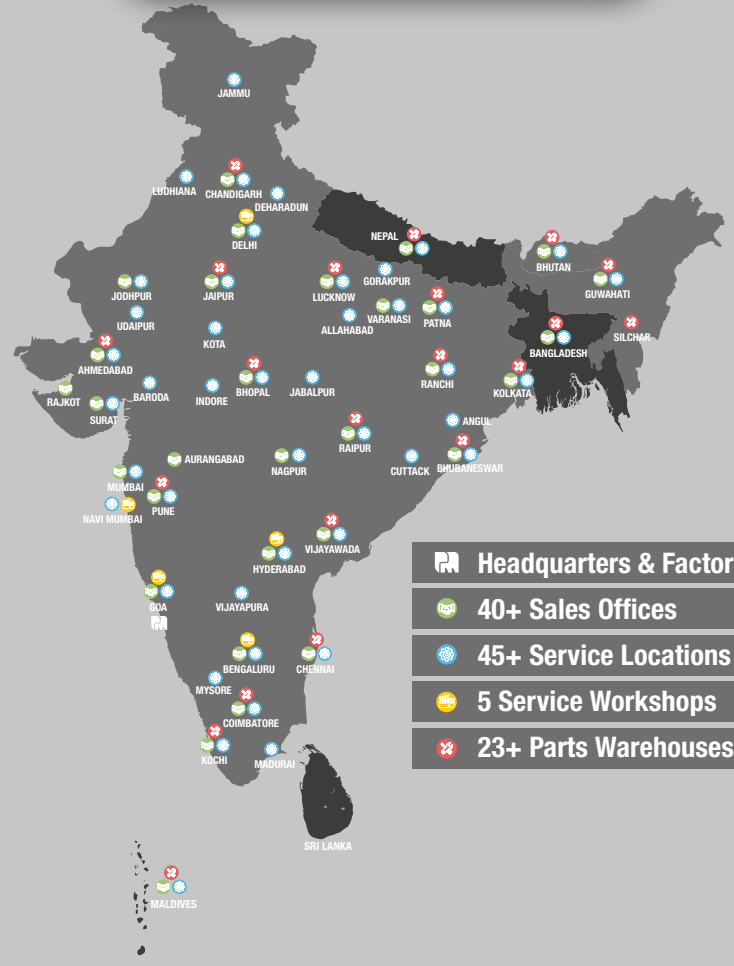
Operations and maintenance solutions for Peace of Mind



Service expert allocated on time for uninterrupted operation



Annual maintenance/ service contracts for extended machine life



-  **Headquarters & Factory**
-  **40+ Sales Offices**
-  **45+ Service Locations**
-  **5 Service Workshops**
-  **23+ Parts Warehouses**

USE GENUINE PUTZMEISTER SERVICE USE GENUINE PUTZMEISTER PARTS

Scan to download the list of
Putzmeister Authorized Spare Parts
Dealers and Warehouses



Scan to check out range of
concrete equipment and to
download our brochures



Putzmeister Concrete Machines Pvt. Ltd.
Plot No. N4, Phase 4, Verna Industrial Estate,
Salcette - Goa 403 722. INDIA
Tel.: +91 (832) 6696 000 · Fax: +91 (832) 6696 300
Whatsapp: +91 91585 34123 · www.putzmeister.com



For all your support needs, contact.india@putzmeister.com

1800 - 267 - 2678

TOLL-FREE NUMBER FOR ENQUIRIES AND SERVICE REQUESTS