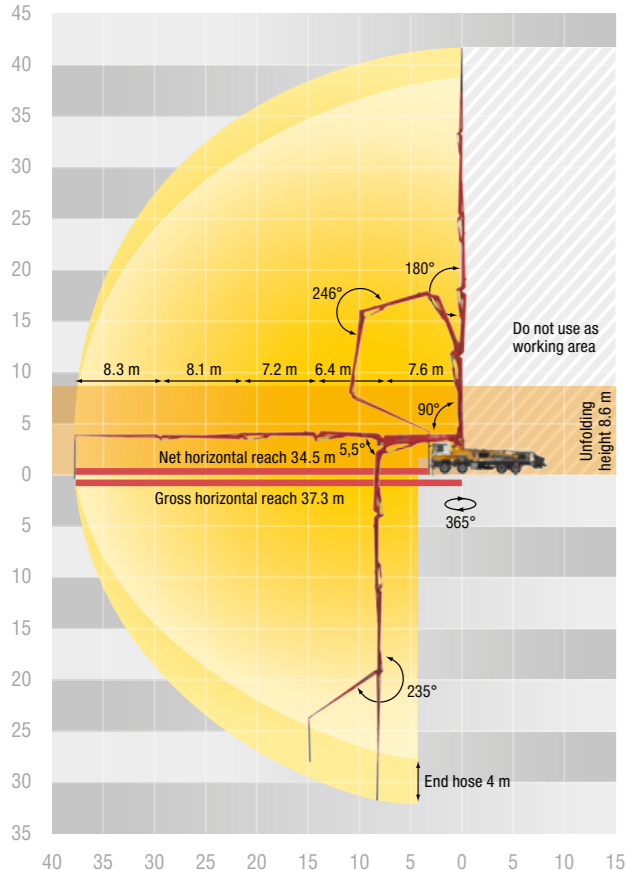


# Technical Specifications

<b>Pump</b>	<b>BSF 42-5.10 H</b>
	<b>Piston Side</b>
<b>Output</b>	95 m³/h
<b>Delivery Pressure</b>	82 bar
<b>Delivery Cylinder</b>	230 mm
<b>Stroke of Delivery Cylinder</b>	1400 mm
<b>Strokes / Minute</b>	27
<b>Hydraulic Ratio</b>	4.3
<b>Transfer Tube</b>	S Transfer Tube (S 2318LS)
<b>Hopper</b>	RS 909 Approx. 600L
<b>Filling Height</b>	Approx. 1.35 m
<b>Control System</b>	Free Flow Hydraulics (FFH - EL)

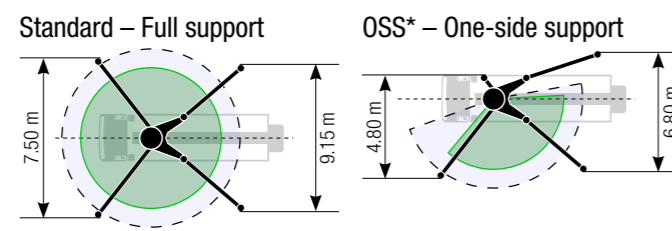
Dimensions, weights and engine power depend on truck model.

## Reach Diagram



## Boom

<b>Reach Height</b>	41.6 m
<b>Horizontal Reach</b>	37.3 m
<b>Reach Depth</b>	max. 31 m
<b>Unfolding Height</b>	8.6 m
<b>Delivery Line</b>	DN 125/5.5
<b>Slewing Range</b>	365°
<b>Number of Arms</b>	5
<b>Folding System</b>	RZ Fold
<b>Hydraulic Control</b>	Compact Boom Control (CBC)
<b>Remote Control</b>	Radio remote control with display
<b>Support Front:</b>	Telescoping, Diagonally
<b>Rear:</b>	Swinging

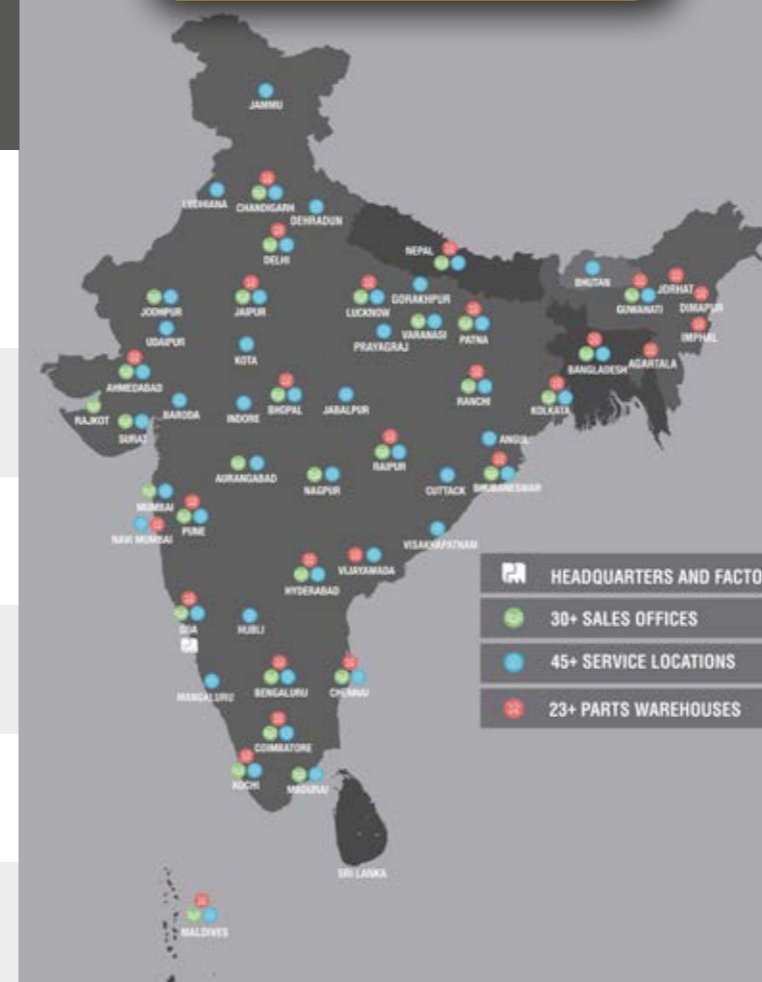


**Putzmeister**  
Genuine Service  
and Parts

## #1 reason customers choose Putzmeister AFTERSALES SUPPORT

Your Putzmeister Machine is in the best hands with our team. We ensure a high level of service, maintenance and genuine parts; we take care of your machine like no one else. Why? **We know your machine better than anyone else!**

- Trained service experts ensure correct diagnosis and service**
- Genuine Putzmeister spare parts for long wear life and superior performance**
- Operations and maintenance solutions for Peace of Mind**
- Service expert allocated on time for uninterrupted operation**
- Annual maintenance/ service contracts for extended machine life**



## USE GENUINE PUTZMEISTER SERVICE USE GENUINE PUTZMEISTER PARTS

Scan to download the list of Putzmeister Authorized Spare Parts Dealers and Warehouses



Scan to check out range of concrete equipment and to download our brochures



**Putzmeister Concrete Machines Pvt. Ltd.**  
Plot No. N4, Phase 4, Verna Industrial Estate,  
Salcette - Goa 403 722. INDIA  
Tel.: +91 (832) 6696 000 · Fax: +91 (832) 6696 300  
Whatsapp: +91 91585 34123 · www.putzmeister.com

**Putzmeister**  
For all your support needs, [contact.india@putzmeister.com](mailto:contact.india@putzmeister.com)

Regional Offices: NORTH: 011 4200 5600, EAST: 033 6614 2525, WEST: 022 2636 0181 / 82, SOUTH: 040 4010 1015  
Service Call Centre: NORTH: 99100 25721, EAST: 84200 59909, WEST: 90821 04420,  
SOUTH (AP, TN): 78939 22727, SOUTH (KA, KL): 90080 65829

Subject to technical modifications and errors.  
© by Putzmeister Concrete Machines Pvt. Ltd. 2023  
All rights reserved. Printed in India CT 4280-91N



# BSF 42-5 Truck-Mounted Concrete Pump

New generation high performance machine

# The New Substructure with Intelligent Technology



The new I frame concept offers improved torsional properties in comparison to the fixed frames. It has the same elasticity as the chassis. Driving thus becomes a pleasure and service life of the vehicle is extended.

Maintenance free components, the comprehensive bolted concept as well as the consistent use of standard component, make the operating and maintenance costs pleasantly usassuming and easy to calculate.

## Cross Outriggers - for a longer life of the chassis

The truck is protected from damage by the transmission of forces to the support legs.

The forces from the boom are transmitted directly to the four support legs. The truck chassis is not used for force transmission and is therefore not loaded with torsion. This ensures not only quieter pumping operation but also a long service life of the whole truck.



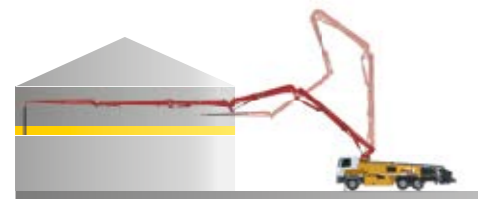
## Radio remote control with display

- \* More user friendly interface
- \* Precise Handling
- \* Accurate pumping & boom control
- \* Well defined controls for smoother operations.



Unique Flexibility and Reach!

**Putzmeister**



RZ-Fold with 5-arm

## Unbeatable manoeuvrability with RZ-Fold system

### Large horizontal, vertical and downward reach – 5 flexible short arms use the working space optimally

The 5 arm boom in the RZ-Fold system has an impressive action radius: 41.6 m vertical reach for all requirement in building construction; 30.7 m reach depth is considerably more than with a comparable 4-arm version. Concreting without dead zones directly from the driver's cab with a forward horizontal reach of up to 34.7 m.

The mobile 5-arm boom provides the machine operator with more manoeuvrability under difficult conditions, e.g. in low buildings, tight inner city areas or in the event of obstacles between the truck and the site of concrete placement.

High-quality wear components ensure machines have a long service life



## The S-Valve for Placing Difficult Concrete

- The S-Valve that is manufactured out of thick-walled special cast steel is designed for difficult, abrasive concrete.
- The automatic wear ring compensates for the uniform wear of parts and therefore prolongs service life.
- The wear ring optimally seals the system. This prevents the bleeding out of concrete fines and effectively reduces the danger of blockages.
- All parts of the S-Valve are easy to change: no need to dismount the hopper for changing wear parts.

## BSF 42-5 Key Benefits

- Improved control of boom, due to reduced boom weight
- One Sided Support
- Optimized for service
- Chrome plated delivery cylinder
- Grab rails on both sides
- Hinged elbow with cleaning port
- Non-skid platform
- Environment-friendly
- Rubber collar at hopper
- Advantages of TRDI
- Remote control with 40 m cable and radio remote
- Improved safety and compliance
- Automatic greasing system
- Standard delivery line boards of 90° and 45° with extended collars for longer service life.
- Support plates for outrigger legs in easy accessible holder.

## Unique Putzmeister Cleaning Lid!

Easy Maintenance!



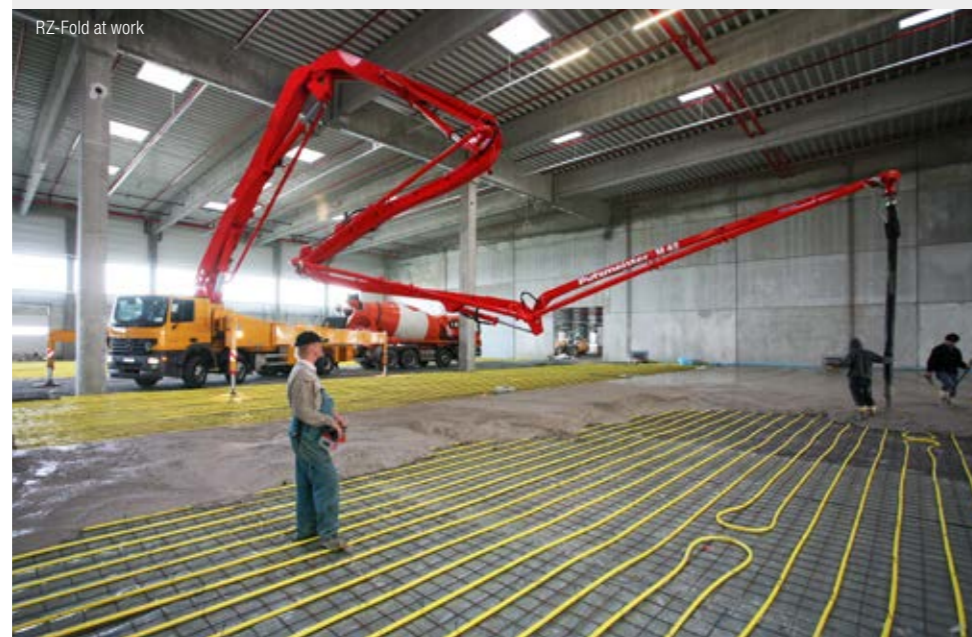
Upto 50% Oil Savings!

Life Long Savings on Every Oil Change!

OTHER BRANDS  
550 Lts



**Putzmeister**  
265 Lts



## OSS and Radio remote features

### Save space-be safe

The cross support developed by Putzmeister which is stable and reliable, saves time and space without compromising on safety.

Construction sites generally have restricted set-up conditions because they are located in urban areas or along busy roads. Therefore, with the optional OSS (One Sided Support), the telescopic support legs can be securely placed in minimal spaces between obstacles and hence reduce the width by 1/3 from the original 7 m. An important advantage of the OSS is that the full use is made of the net reach for the fully supported side.

