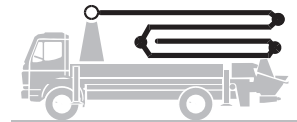


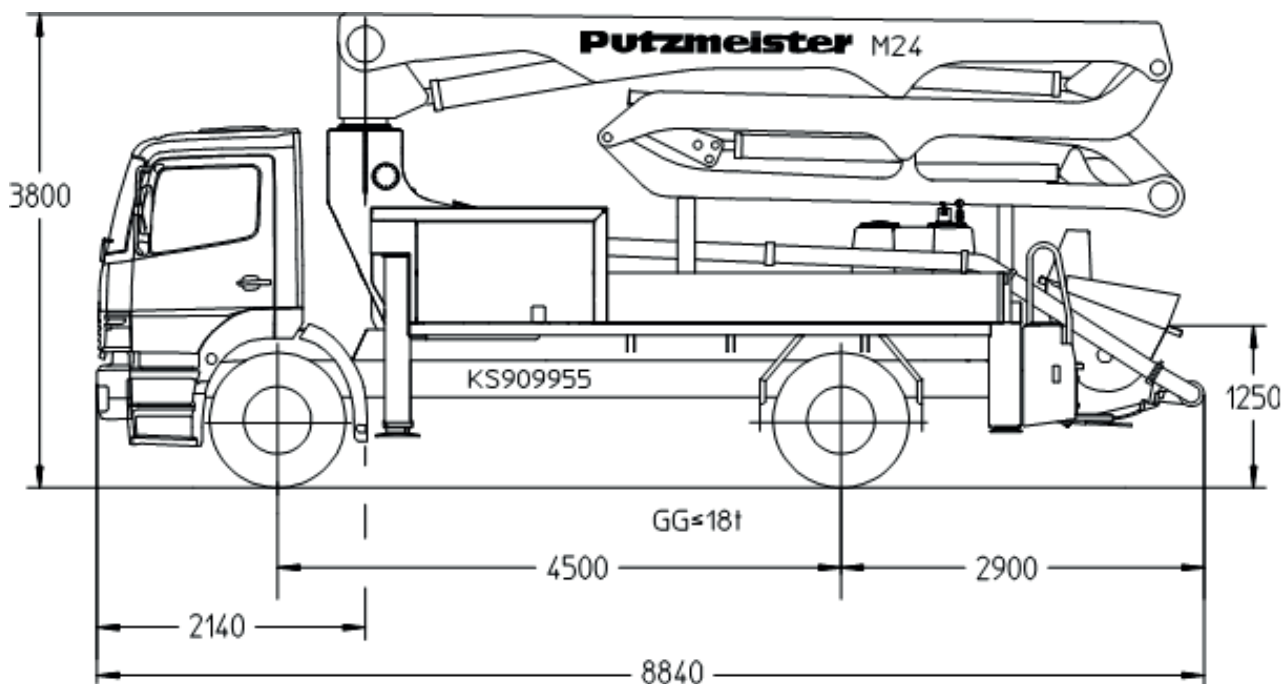
Truck-mounted concrete pump

BSF 24-4.09 H

Output up to 160 m³/h
 Delivery pressure up to 130 bar*



.11 H
.11 H LS
.16 H



Note: Standard version for .09 H and .11 H (LS). Dimensions and weights depend on truck, pump model and equipment.
 Dimensions in mm, MB-Axor 1828 as example.
 * For .14 H and .16 H a 3-axle truck is required, gross weight > 18 t.
 For illustration only.

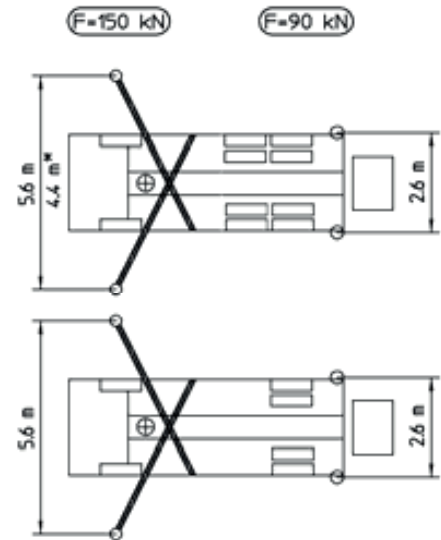
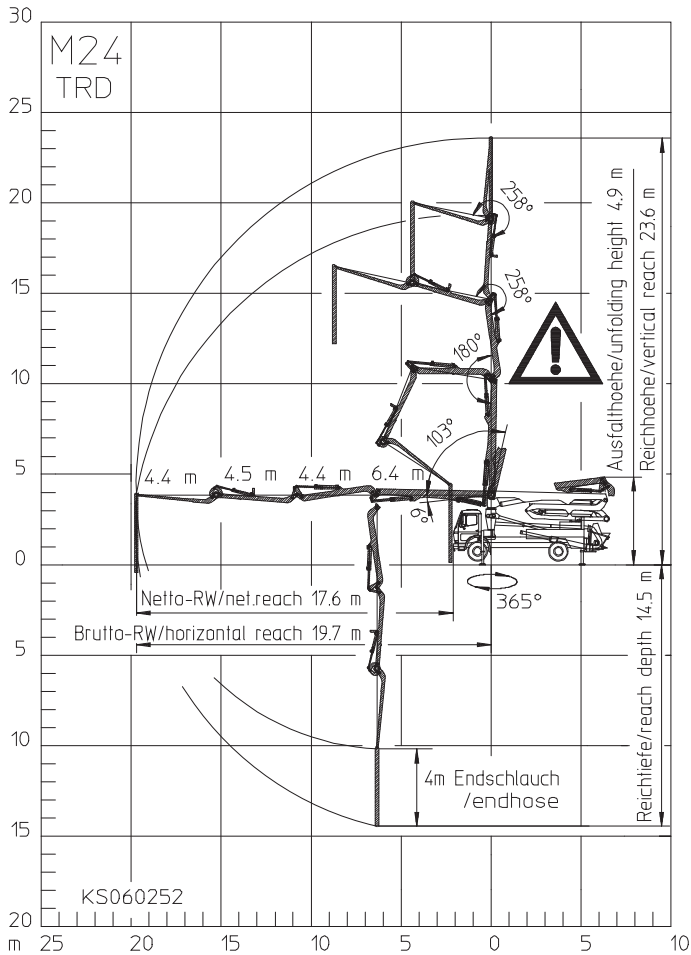
Technical data

Boom M 24-4		
Sections		4
Reach height	m	23.6
Horizontal reach	gross	m 19.7
	net	m 17.6
Reach depth max.	m	14.5
Unfolding height	m	4.9
End hose length	m	4
Folding system		ZR
Delivery line		DN 125

Pump		BSF	.09 H	.11 H	.11 H LS	.16 H
Rod side	Output	m ³ /h	-	-	-	160
	Delivery pressure	bar	-	-	-	85
	Strokes	1/min.	-	-	-	31
Piston side	Output	m ³ /h	90	110	110	108
	Delivery pressure	bar	78	78	85	130
	Strokes	1/min.	26	32	27	21
	Delivery cylinder	Ø mm	230	230	250	230
	Stroke	mm	1400	1400	1400	2100

*) Delivery line boom max. 85 bar.
 All data maximum theoretical.

Reach information diagram, Support



* depends on chassis
Dimensions can differ depending on configuration.



Range in which you must not work with the end hose.

Serial delivery scope

Support plates 4 x
Connection for watertank filling
Connections for hydraulic emergency supply (boom)
Step left/right on hopper or underrun guard
Agitator rotation automatic, dep. on pump direction
Operating position at hopper to drain water pipe
Towing eye
Concrete hopper with agitator
User manual and spare part list (1 x paper, 1 x CD-ROM)
Tool set incl. standard equipment
CAN-Bus System
End hose 4 m DN125 5.5"
Ergonic 2.0
Ergonic Pump System inclusive Ergonic Outout Contro (EOC)
Hydraulic hose for replacement in hose pack
Chassis horn via remote control on hopper
Combined lubrication: central lubrication hopper
Radio remote control with display
Delivery piston "standard"
Delivery cylinder chrome-plated
Cardan shaft maintenance-free

Hopper grid welded
Hinged elbow with cleaning port
Painting: 3 colored, Putzmeister Standard
Light for illumination pump and water box LED
Alarm signal: boom not in boom cradle
Boom pedestal TRD
Platform non-skid
Agitator safety switch off automatically (RSA), RFID controlled
Wash-out port lid with locked slide pin
Cleaning hose 10 m incl. bracket and nozzle
Agitator radio remote / on site controlled
S-valve transfer switchover fast/slow
Side panel right/left foldable
Splash guard fixed
Flushing water pump 160 l/min 25 bar
Spectacle wear plate DURO 22
Full support system
Water supply, hopper
Water tank 880 / 610 l, depends on core pump
Wheel chocks 2 x, with halter

Equipment Standard Line (included in basic machine)

Deck delivery line in standard quality (1-layer) PM40
Compressed air connection rear side
Delivery line (1-layer)
Rubber collar on concrete hopper
Holder for hammer and trowel
Hand rail left and right side (not EEA)
Lighting of control points LED
Lighting modul control box LED
Lighting hopper LED
Delivery note-box, plastic
Container for sponge balls
Soiling indicator hydraulic oil filter

See quotation for exact serial delivery scope.
Comprehensive range of options available on request.