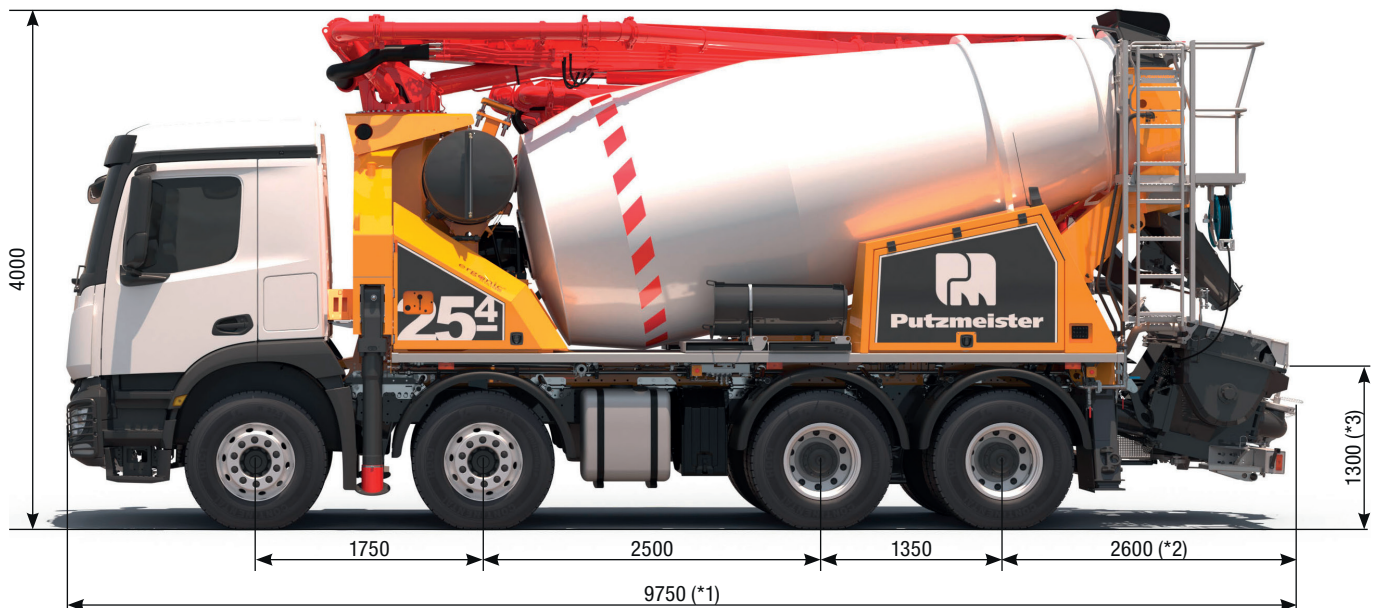


PUMI®

25-4.77 S / .67 CS / .67 Q

Truck-mounted concrete pump with mixer



| | | *1 | *2 | *3 |
|------------------------------------|----|------|------|------|
| Different dimensions for pump type | S | 9750 | 2600 | 1300 |
| | CS | 9460 | 2310 | 1370 |
| | Q | 9400 | 2250 | 1350 |

Note: Standard version. Subject to technical modifications and errors.

Dimensions in mm, for example MB-Arocs and PUMI S. Dimensions depending on the vehicle and pump type (see adjacent table) . Pictures contain optional equipments.

Technical data

| Boom TMM 25-4 | | | |
|------------------|-------|---|--------------|
| Number of arms | | | 4 |
| Reach height | m | | 24.5 |
| Horizontal reach | gross | m | 20.0 |
| | net | m | 17.3 |
| Reach depth max. | m | | 13.6 |
| Unfolding height | m | | 5.5 |
| End hose length | m | | 3 |
| Folding system | | | Z fold (Z) |
| Delivery line | | | DN 125 – 5.5 |

| Truck mixer 7 cbm | | |
|-------------------|----------------|--------|
| Nominal capacity | m ³ | 7 |
| Filling ratio | % | 60 |
| Drum speed | U/min | 1 – 14 |
| Water tank | l | 630 |

| System S | | TMP 1007 S | |
|-----------------------------|-------------------|------------|--|
| Delivery cylinder | Ø mm | 230 | |
| Stroke | mm | 1000 | |
| Standard: Drive piston side | | | |
| Output | m ³ /h | 70 | |
| Delivery pressure | bar | 75 | |
| Strokes | 1/min. | 28 | |
| Optional: Drive rod side | | | |
| Output | m ³ /h | 92 | |
| Delivery pressure | bar | 51 | |
| Strokes | 1/min. | 37 | |

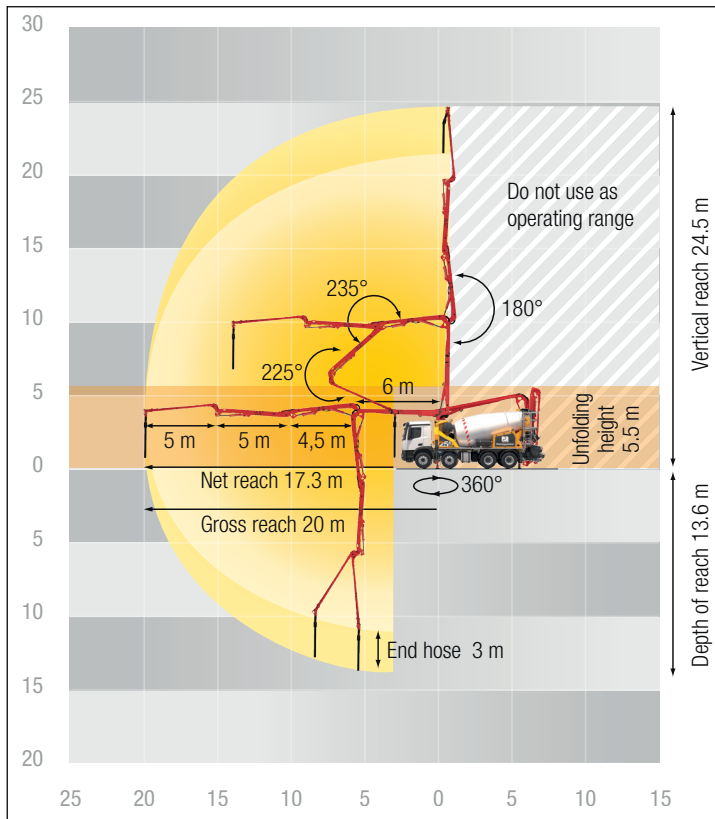
| System CS transfer tube TMP 60 CS | | |
|-----------------------------------|-------------------|-----|
| Output | m ³ /h | 56 |
| Delivery pressure | bar | 57 |
| Delivery cylinder | Ø mm | 230 |
| Stroke | mm | 700 |

| System rotor pump TMP 60 Q | | |
|----------------------------|-------------------|-----|
| Output | m ³ /h | 58 |
| Delivery pressure | bar | 25 |
| Pump hose | Ø mm | 125 |

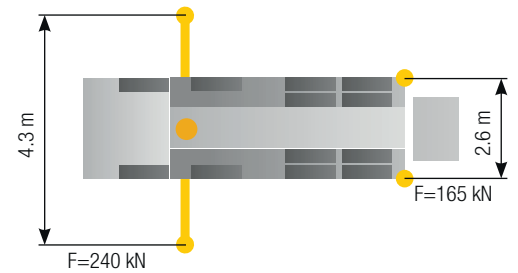
Maximum outputs of 92 m³/h and maximum concrete pressures of 75 bar may be achieved, depending on the equipment of the machine.

It is not possible to achieve maximum outputs and maximum concrete pressures simultaneously. All data maximum theoretical.

Reach information diagram



Support



Delivery scope Standard Line

| | | |
|---|---|---|
| Agitator active while driving on jobsite | EMC (Ergonic Mixer Control) | Second manhole opening with additional mixer drum adjustment |
| Agitator rotation automatic, dep. on pump direction | EOC 2.0 (Ergonic Output Control) | Setup frame, screwed |
| Agitator safety switch off automatically (RSA), RFID controlled | EPS (Ergonic Pump System) | Stowage space, lockable |
| Agitator, controllable via remote control or local | ESC (Ergonic Setup System) | Support cradle switch RFID controlled |
| Alarm unit: boom not in boom cradle | ESC full support system | Support plates (4x), in 2 magazines |
| CAN-Bus System | End hose 3m DN125 | Tool set incl. standard equipment |
| Cardan shaft, maintenance-free | Hinged elbow with cleaning port (PUMI S only) | Towing eye |
| Central lubrication hopper, electrically (PUMI S + CS only) | Hopper cover, rubber | User manual / spare part list certified (1x Docu box, 1x CD-ROM) |
| Central lubrication point, manually (PUMI Q only) | Hopper grid | Wash-out port lid with locked slide pin (PUMI S + CS only) |
| Chute adjustment el.-hydraulic | Hydraulic hose for replacement in hose pack | Water supply for small quantities on hopper (1/2") |
| Chute slewable, steel | License plate lighting, LED | Water supply mixer drum, controllable via remote control or local |
| Cleaning hose 8m+2m incl. bracket and nozzle | Mixer discharge automatically, level indicator controlled | Water tank 630 l, pressure tank |
| Concrete hopper with agitator | Mixer drum with 4 end spiral metal sheets | Wear plates for filling and discharge hopper and slewable chute |
| Connection for water tank filling, both-sided | Paintwork Putzmeister Standard | |
| Connections for hydraulic emergency supply (boom) | Platform for cleaning with drop guard | |
| Delivery cylinder, chrome-plated (PUMI S + CS only) | Pressure Connection with cleaning port (PUMI CS only) | |
| Delivery piston "Longlife" | Radio remote control with display | |
| Diagnose interface | Second drip ring on mixer drum | |

See quotation for exact serial delivery scope.
Comprehensive range of options available on request.