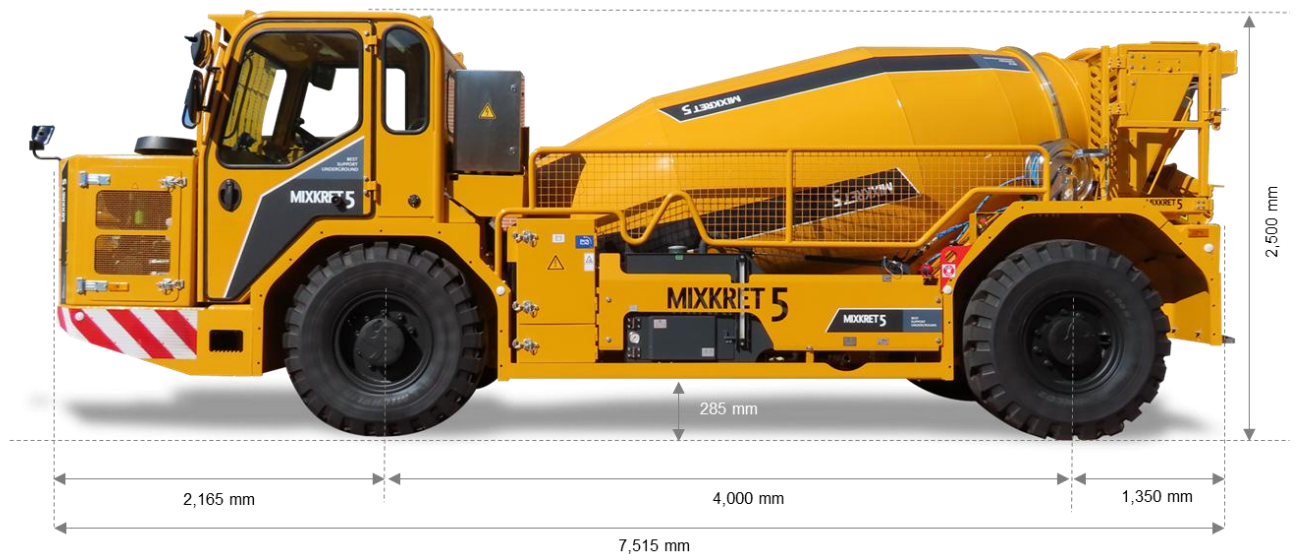
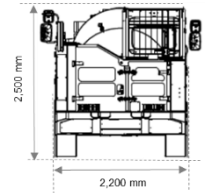


Low-profile concrete mixer for mining

Mixkret 5

Concrete mixing and transport capacity: 5 m³
Power: 168 kW (225 HP) at 2.200 rpm



Note: This is a merely informative, non-binding document. Maximum theoretical values listed. Specifications are subject to change without prior notice. Photos and drawings are for illustrative purposes only. For available options, please consult the factory.

Standard equipment

Concrete drum for mixing, transporting and discharging		
Maximum concrete capacity	m ³	5
Adjustable turning speed in both directions	rpm	0 - 18
Discharge height	mm	1,160 – 1,369
Speed control during traslation		
Anti-spillage rear hatch		Hydraulic opening and closing
Power Pack connection Mixkret-Mixkret		
Flowmeter for water pump		

Remote control		
Cable	m	6

Diesel engine		
EU-Stage IIIA, Canmet certified	kW (HP)	168 (225)
EU-Stage V / EPA-Tier 4f	kW (HP)	150 (201)

Putzmeister off-road vehicle, 4-wheel drive		
Weight (without/with load)	kg	11,500/ 23,500
Maximum climbing capacity at full load (longitudinal/ trasversal)	%	30 / 10
Transmission		Hydrostatic progressive system with continuous variation (ICVD), no gears to change

Electronic speed control system		To travel along down slopes
Maximum speed	km/h	20
Driving		4 WD
Steering		Hydraulic four-wheel steering (4WS), crab-mode
Service brakes		On both axles, multi-disc in oil bath, hydraulic with independent circuits
Parking brakes (negative)		On both axles, internal SAHR discs, hydraulic operation
Parking brake release system in case of emergency		Hydraulic operation with manual valve
Driving lights (x9 LED)	W	35
LED beacon		
Electric equipment (x2 batteries)	V / Ah	12 / 100
Oil tank	l	238
Diesel tank	l	265
Fuel shut-off valve		Manual
Cabin		FOPS/ROPS certified with frontal protection grid Frontal glass with wiper and rear glass

		Control panel and rear camera screen
Driver seat		Mecanic suspension with operator-presence detection system
Rear camera		Night vision
Mining wheels		Michelin XMine D2 12.00 R20
Centralized greasing system		Automatic

High-pressure water pump for cleaning		
With hose widening system and gun		
Max. pressure	bar	200
Flow	l/min	30
Hose	m	15
Water tank	l	200

Low-pressure water pump		
With drum's conexión from the water tank or external outlet		
Max. pressure	bar	6.6
Flow	l/min	273
Hose's diameter	mm	25

Optional equipment

Cabin		
Door without glass		
Door with glass and complete cabin glazing		Includes HVAC
Alternative driver seat		Neumatic suspension (PRIMO-L)
Higher cabin height with air suspension seat		
Wheels		
Mining wheels		With foam filled (Michelin XMine D2 12.00 R20)
Mining spare wheel		Depends on configuration
Welded support for spare wheel		
Fire suppression system		
ANSUL		Manual
ANSUL		Mix
DAFO		Mix
For electric panel		
Additive system		
Additive pump	l/h	600 - 1000
Additive tank	l	120
For optimizing the charge/discharge		
Protection of the rolling ring		
Drain chute drip cap		
Extension of the discharge chute		
Discharge hopper		
Double helix drum for unloading on a sloped surface		
For greater safety		
Locked battery circuit breaker		
Automatic braking system when open the door		
Additional kit with front emergency bottoms		
Diesel engine shutdown and movement through emergency bottoms		
Anticorrosion painting		
Extra diesel tank 85 l		
High efficiency filtration system for hydraulic oil		
Tramming direction lights*		
*Check available options or describe your request		

Turning radius

