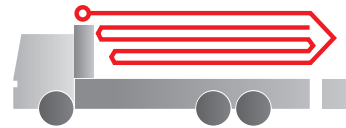


# Truck-mounted concrete pump

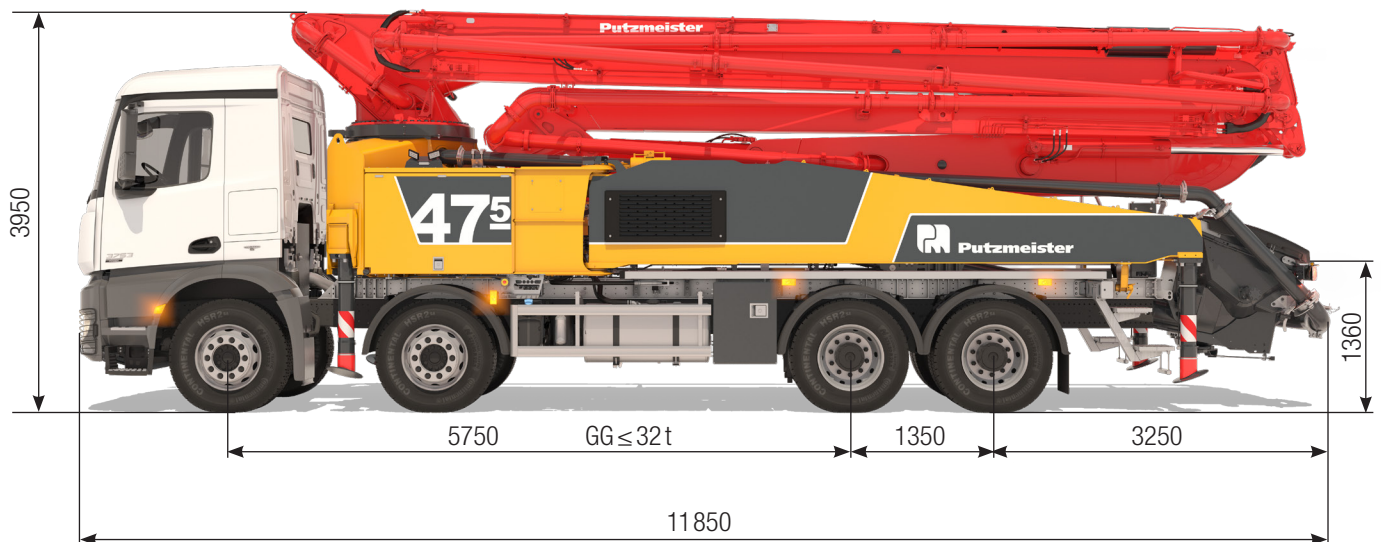
# BSF 47-5.16 H

Output up to 190 m<sup>3</sup>/h  
 Delivery pressure up to 130 bar\*



**.16 H LS**  
**.17 i LS**  
**.19 i LS**

**ergonomic<sup>®</sup>**  
*inside 3*



Note: Standard version. Dimensions and weights depend on truck, pump model and equipment.  
 Dimensions in mm, MB-Arocs 4143 as example.  
 For illustration only.

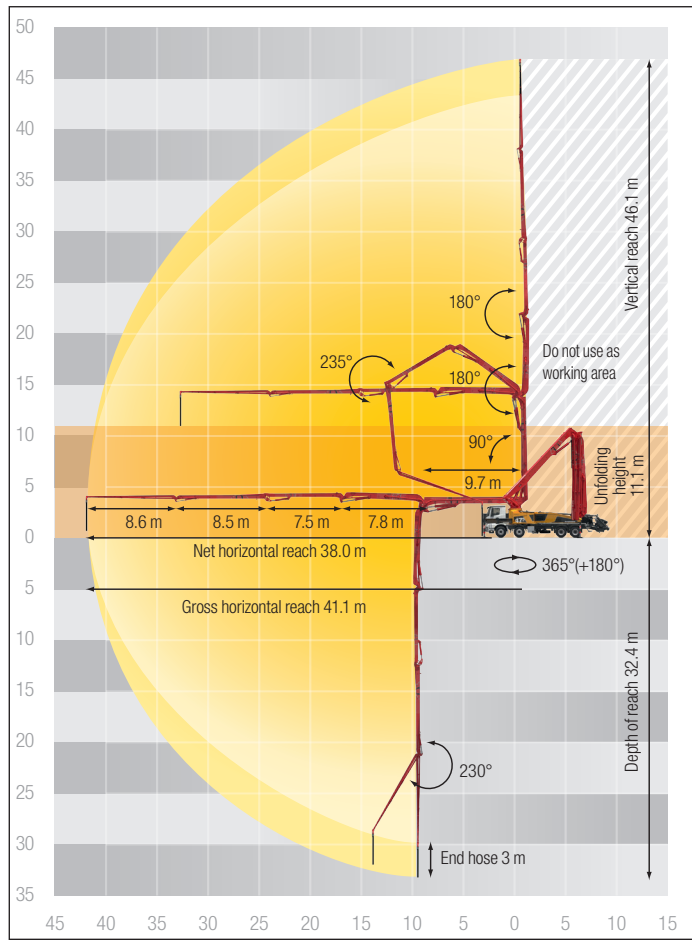
## Technical data

Boom M47		
Sections		5
Reach height	m	46.1
Horizontal reach	gross	m 41.1
	net	m 38.0
Reach depth max.	m	32.4
Unfolding height	m	11.1
End hose length	m	3
Folding system		RZ
Delivery line		DN 125

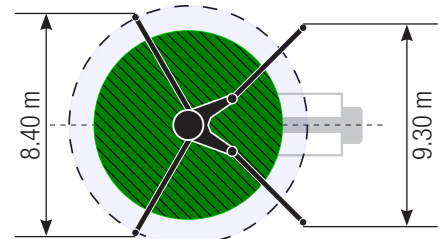
Pump		BSF	.16 H	.16 H LS	.17 i LS	.19 i LS
Rod side	Output	m <sup>3</sup> /h	160	-	-	-
	Delivery pressure	bar	85	-	-	-
	Strokes	1/min.	31	-	-	-
Piston side	Output	m <sup>3</sup> /h	108	160	170	190
	Delivery pressure	bar	130	85	85	85
	Strokes	1/min.	21	26	27	30
	Delivery cylinder	Ø mm	230	250	250	250
	Stroke	mm	2100	2100	2100	2100

\*) Delivery line boom max. 85 bar.  
 All data maximum theoretical.

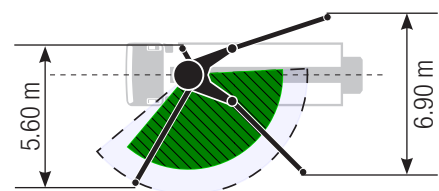
# BSF 47-5 Reach information diagram, support diagram



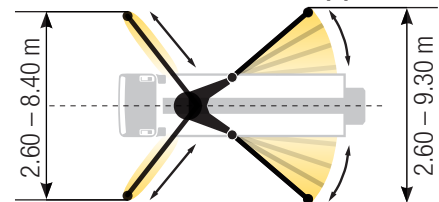
## Standard – Full support



## OSS\* – One-side support



## iSC\*\* – Full-flexible support



Dimensions can differ depending on configuration.  
 Support width based on center of support leg.

\* non EEA, no CE marking

\*\* EEA, CE marking

## Delivery scope Standard Line

### Support

- Full support system
- Support plates (4x), in 2 magazines

### Control systems

- Agitator, controllable via remote control or local
- EOC 2.0 (Ergonic Output Control)
- Ergonic 3 control system
- Ergonic Graphic Display 9.7" incl. Ergonic diagnosis interface
- Radio remote control with display

### Hopper

- Agitator rotation automatic, dep. on pump direction
- Agitator safety switch off (RFID)
- Central hopper lubrication, electric
- Delivery cylinder, chrome-plated
- Hinged elbow with cleaning port
- Rubber collar on concrete hopper
- Spectacle wear plate DURO 22

- Steps left and right, zinc-plated
- S-valve transfer switchover fast/slow
- Wash-out port lid with locked slide pin

### Cleaning

- Cleaning hose 8 m + 2 m incl. bracket and nozzle
- Compressed air connection, rear side
- Connection for water tank filling, both-sided
- Container for sponge balls
- Operating position at hopper to drain water pipe
- Water outlet on hopper, for small quantities (1/2")
- Water pump, 160 l/min 25 bar
- Water tank 700 l

### Delivery line

- Deck delivery line in boom delivery line quality
- Delivery line PROLINE 1000 (1-layer)
- End hose 3 m DN125

### Safety

- Connections for hydraulic emergency supply (boom)
- Guardrail right side
- Mushroom button for horn, yellow
- Towing eye

### Lighting

- Control points lighting, LED
- Hopper lighting, LED
- Light for illumination pump and water box, LED
- Lighting of control box, LED

### Miscellaneous

- Delivery note box plastic
- Hydraulic hose for replacement in hose pack
- Operating instruction and spare parts manual (1x paper, 1x CD-ROM)
- Paintwork Putzmeister Standard
- Tool kit