

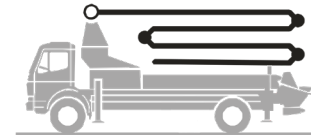
Truck-mounted concrete pump

BSF 27-4.12 H

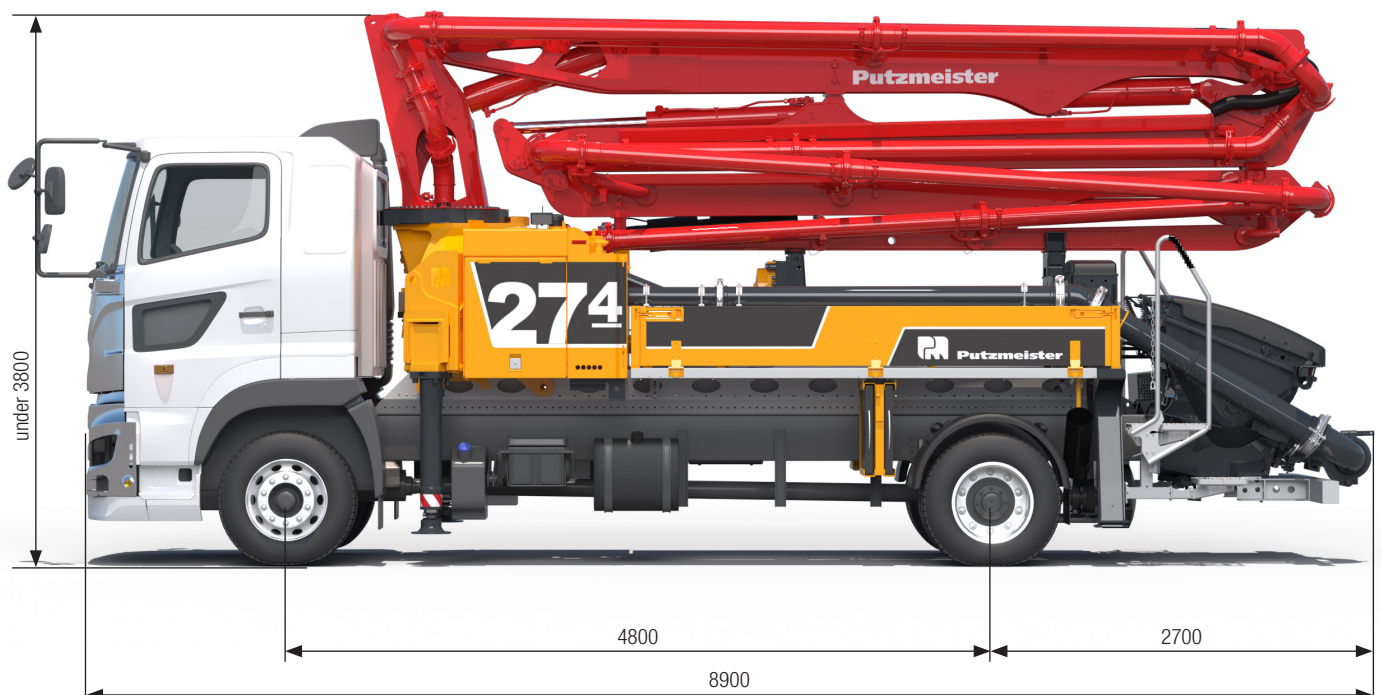
Japan Edition



Output up to 120 m³/h · Delivery pressure up to 100 bar*



ergonomic[®]
inside **3**



Note: Standard version. Dimensions and weights depend on truck pump model and equipment.
Dimensions in mm. Hino as example.
For illustration only.

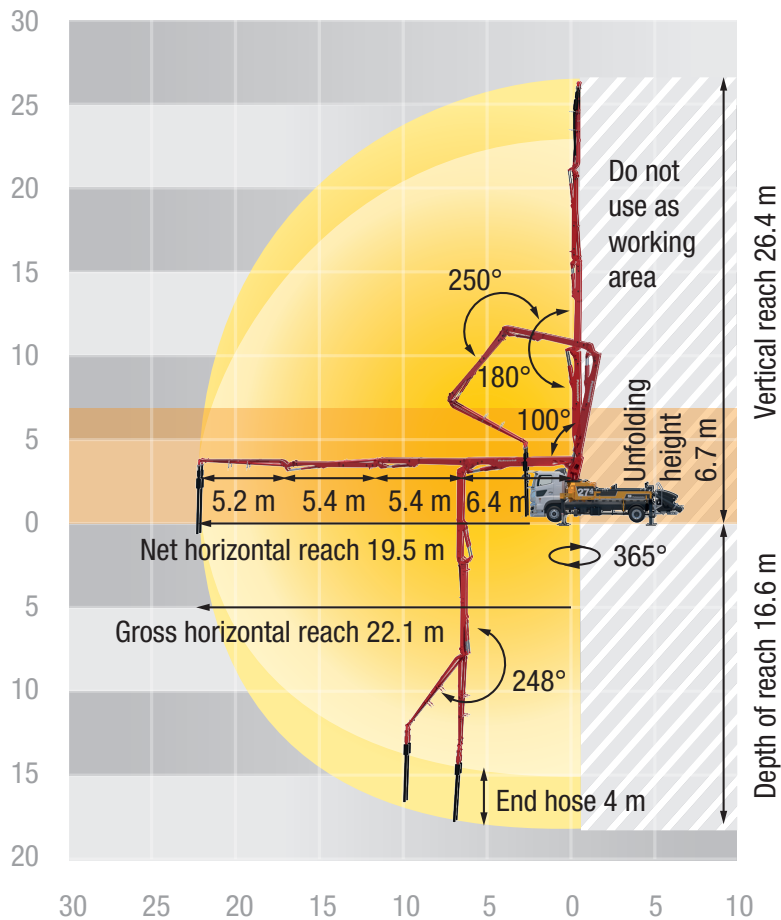
Technical data

Boom M 27-4			
Sections			4
Reach height	m		26.4
Horizontal reach	gross	m	22.1
	net	m	19.5
Reach depth max.	m		16.6
Unfolding height	m		6.7
End hose length	m		4
Folding system			Z
Delivery line			DN 125

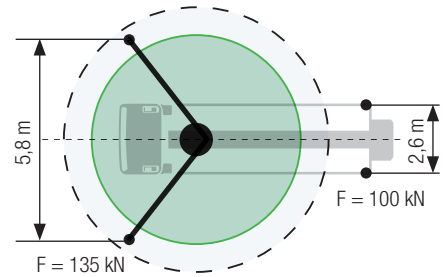
Pump		BSF	.12 H
Rod side	Output	m ³ /h	120
	Delivery pressure	bar	67
	Strokes	1/min.	46
Piston side	Output	m ³ /h	81
	Delivery pressure	bar	100
	Strokes	1/min.	31
	Delivery cylinder	Ø mm	200
	Stroke	mm	1400

*) Delivery line boom max. 85 bar.
All data maximum theoretical.

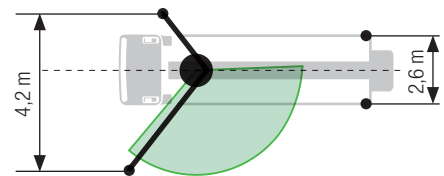
Reach information diagram, Support



Standard – Full support



OSS* – One-side support



Dimensions can differ depending on configuration.
Support width based on center of support leg.
Diameter of swivel plate 270 mm.
The specified values are reference forces.

* non EEA, no CE marking

Delivery scope standard equipment

Support	Cleaning	Standard for Japan
Full support system	Connection for water tank filling, both-sided	Additional push button for horn, mounted left side hopper
Support plates (4x), in 2 magazines	Water outlet on hopper, for small quantities (1/2")	Compressor 455 l/min, 12 bar incl. wash out adapter/catch basket
Swivel support plates	Water pump, 160 l/min 25 bar	Delivery hose 1.5 m
Miscellaneous	Water tank 700 l	Delivery line (2-layer)
Operating instruction and spare parts manual (1x paper, 1x CD-ROM)	Safety	Delivery Piston „Longlife“
Paintwork Putzmeister standard	Connections for hydraulic emergency supply (boom)	Distributor gear
Side panel right/left foldable	Guard rail on pedestal	End hose with squeezing valve „drop stop“ mounted
Tool kit	Hand rail right side	Hard metal wear parts kit
Delivery line	Mushroom button for horn, yellow	Lighting in hinged hopper cover LED
Deck delivery line in boom delivery line quality	Towing eye	OSS one side support (assistance device)
Core pump / Hopper	Control systems	Pump control with level indicator, incl. signal lights
Agitator rotation automatic, dep. on pump direction	EOC 2.0 (Ergonic Output Control)	Rear underrun protection
Agitator safety switch off (RFID)	Ergonic 3	SBU with pressure connection and gate valve
Central hopper lubrication, electric	Ergonic Graphic Display 9.7" incl. Ergonic diagnosis interface	Side marker lamps, LED
Steps left and right, zinc-plated	Radio remote control with display	Splash guard foldable
Wash-out port lid with locked slide pin		Underrun protection, lateral
		User manual and spare part list in Japanese
		Vibrator, controllable via remote control or local
		Water (tank) box drainage via C-hose connection close to rear steps left
		Working light at boom top LED, removeable

See quotation for exact serial delivery scope. Comprehensive range of options available on request.