



Putzmeister



Stationary Placing Boom

MX 32-4 Multi

Faster to assemble, easy to relocate

Honed to the Optimum Design

The new MX 32-4 Multi stationary boom from Putzmeister combines old strengths with new innovations. The result provides you with increased flexibility and user-friendliness and reduced operating costs. One example is the new hinge design, the boom can be assembled even faster and is easy to relocate. It can be lifted by the crane without any problems and assembled at any location in no time.

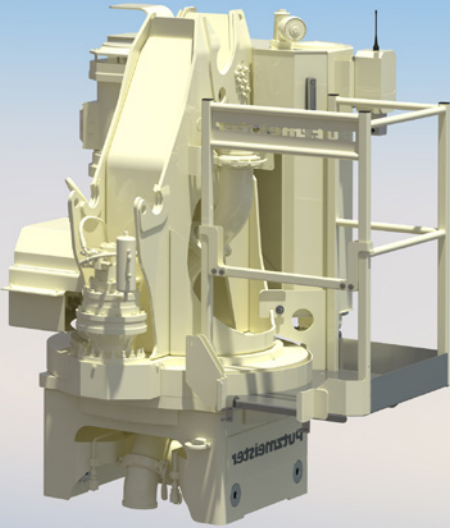
The maximised vertical reach or depth of reach provides even more room to work in, especially thanks to the -10° negative angle of inclination of the first arm. Even for typical applications of our stationary booms, such as building dams, liquid gas tanks (LNG), bridges and in a wide range of high-rise construction projects, this often enables you to gain crucial meters.

Inspired hinge technology - mount, insert, pour

We rely on newly designed, consistently implemented hinge technology. This quick release system ensures that the MX 32-4 Multi can be assembled quickly and extremely easily. The placing boom can be removed from the boom pedestal even more easily and assembled or dismantled as a unit. This offers you more space to work in on the construction site and provides considerable time savings during assembly. Firstly, the placing boom can be transported to the boom pedestal using a crane without any problems and mounted. Secondly, it can be secured with only a few simple movements and is then immediately fully operational.



The new compact and efficient Boom Pedestal



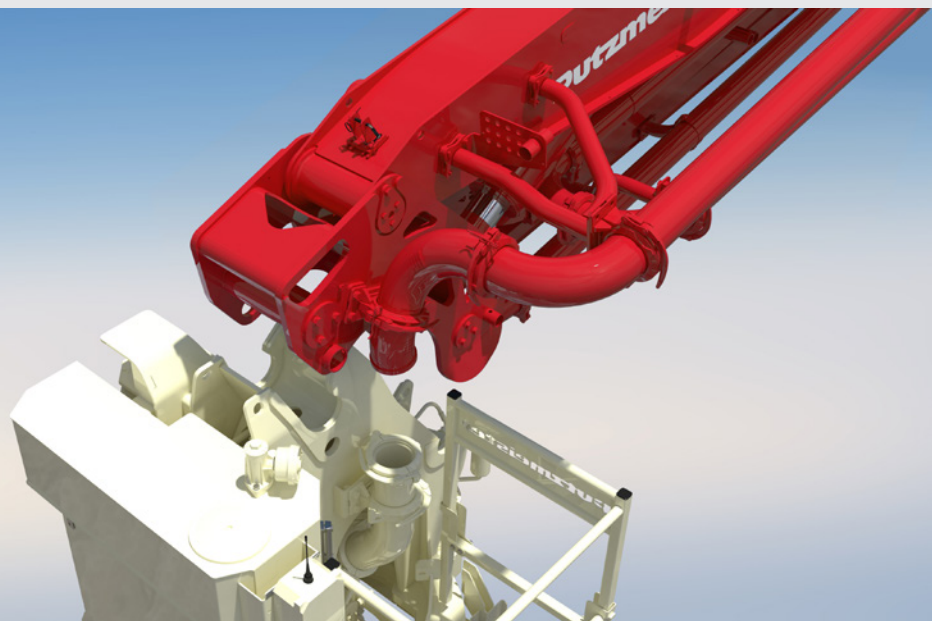
Consistently compact - everything revolves around the new boom pedestal

Our engineers have not only completely optimised the placing boom, but also the boom pedestal of the MX 32-4 Multi. It has a powerful planetary gearing which stands out to its compact design, among other features. All the components of the slewing head - even the electric control cabinet and the hydraulic fluid reservoir - rotate and are always in the machine operator's range of vision. This means that fixed obstacles in the working area on the platform cannot become hazardous. The drive output is also remarkable, especially in terms of efficiency and environmental friendliness. A 60% reduction in oil volume speaks for itself.

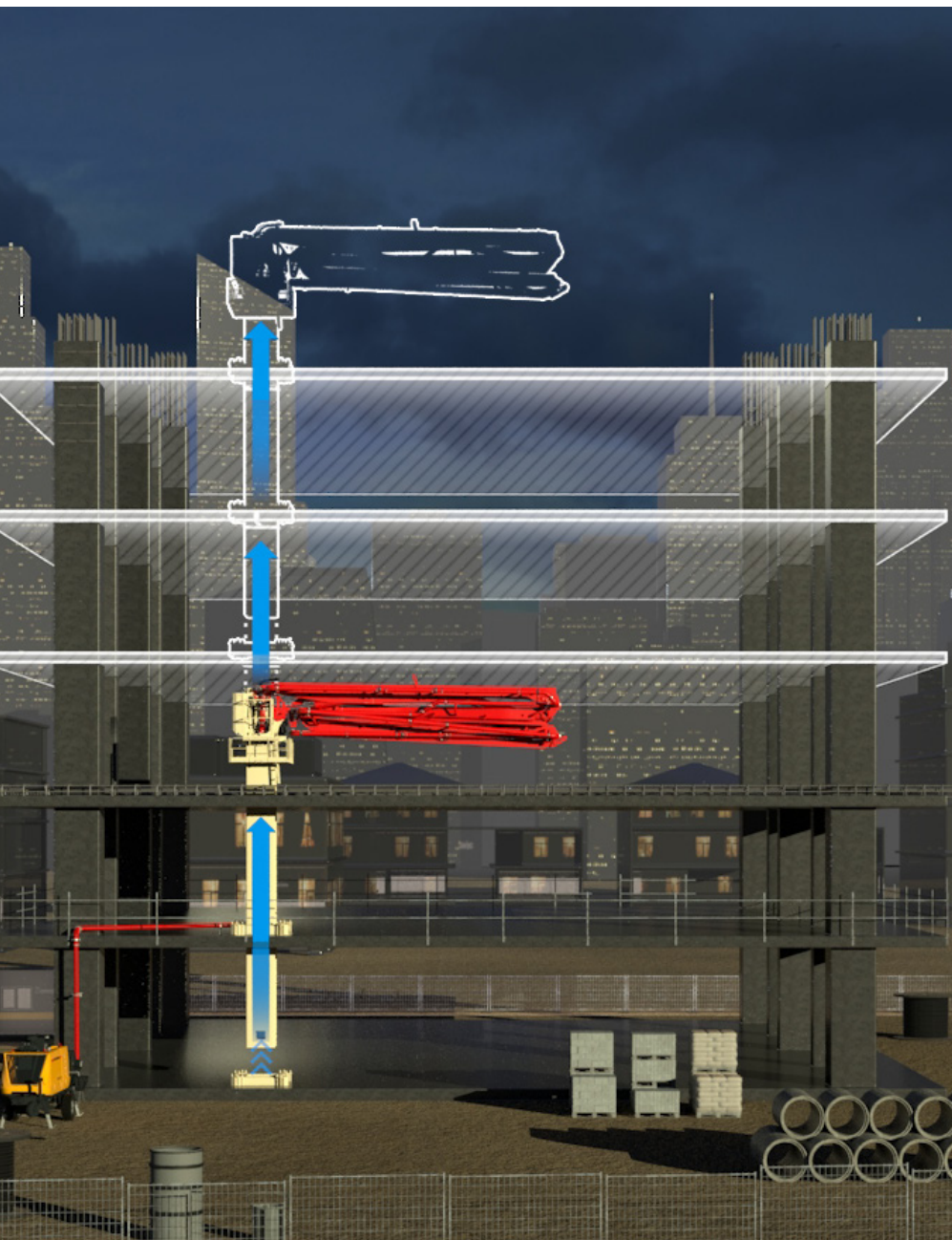


Secured workplace - the platform with brains

Here, everything has its place - especially the machine operator. The large working platform provides sufficient room for service work and for assembling the slewing head and the placing boom. Good accessibility to all components enables you to work safely, comfortably and efficiently. In addition, the platform is designed so that the placing boom can rotate by 360°, even with a negative inclination angle of -10°.



Self Climbing



In the initial phase, the free standing boom, mounted on a tubular column or lattice tower, is used to concrete the base plate and the first floor.

Following this initial phase, the climbing boom uses the integrated lifting equipment to move up through the floors and shafts to the height of the floor still to be constructed.

On large construction sites, the displaceable boom can be moved from one tubular column to another using the quick disconnect system.

The Key Benefits at a Glance

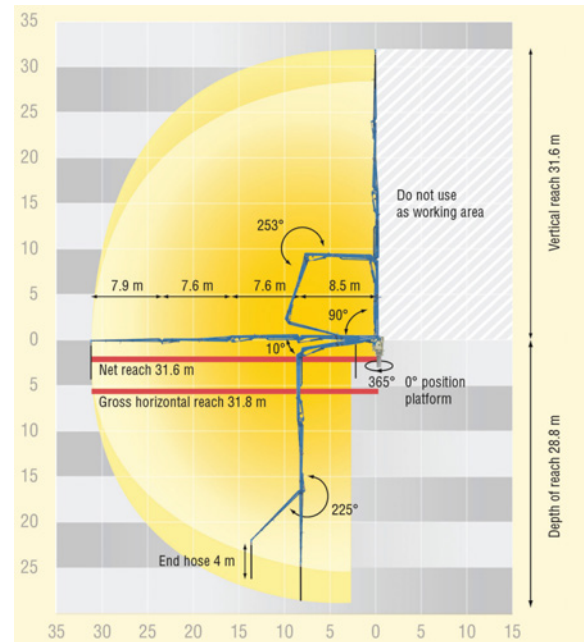
- The new quick release system with hinge technology enables a **quick and simple assembly** of the placing boom
- **Increased horizontal reach/depth** of reach, especially due to the -10° inclination angle of the first arm
- **Flexible Z folding** boom opens up in a large angular range and can reach everywhere within the range
- **More efficient drive** with planetary gearing
- **Secure operation of the boom** thanks to the compact slewing head without stationary parts
- The new working platform provides **good accessibility and plenty of space for assembly.**
- **Environmental friendly** because of reduced oil volume
- Suitable for the **RS 850 / RS 751 tubular column system**
- The use of low-maintenance standard components leads to **lower service cost**
- **Free standing height** of 19.5m

Technical Data

Boom

System	Tubular column (RS)
Delivery Line	SK 125/5.5"
Arms	4
Fold System	Z
Reach	
Horizontal	31.8 m
Vertical	31.6 m
Depth	28.8 m
End hose length	4 m
Weight	
Boom Assembly	4860 kg
Heaviest single sub assembly	3608 kg
Free Standing Height	19.5 m

Reach Diagram



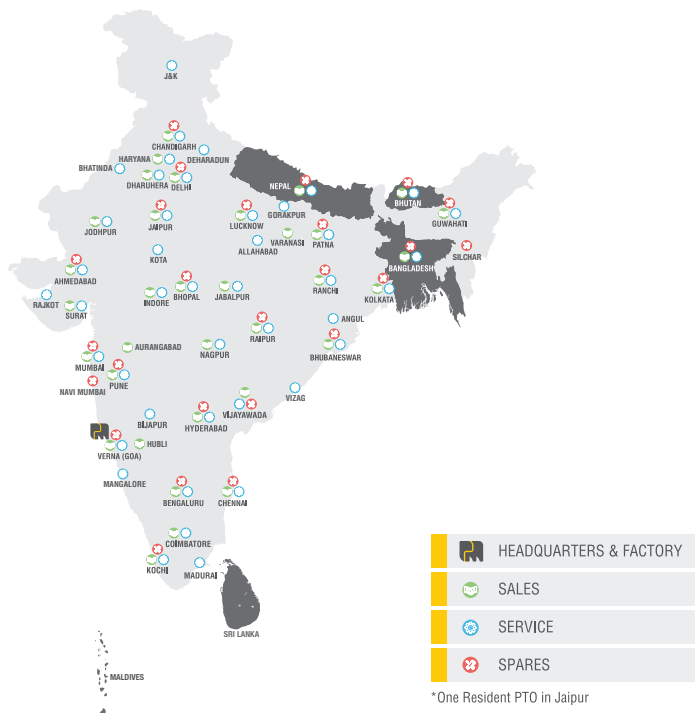
Putzmeister Concrete Solutions

#PMKnows

Putzmeister is a world leading solution provider for pumping, mixing and placing concrete, mortar and industrial solids. For over 60 years Putzmeister Concrete Solutions have been utilized by construction, infrastructure, mining, energy and environment sectors in a wide range of environments and application conditions all over the world. Whatever the construction challenge, Putzmeister has the experience and know-how to provide you with the right equipment, application support and guidance, service, training and spare parts. When you invest in Putzmeister, you don't just get concrete equipment – you get an integrated solution to help you make the most out of your investment and improve your profitability.

#PMCares

After Sales & Parts Service - India
Operation & SAARC Countries



Putzmeister Concrete Equipment Range



BATCHING PLANT
30 / 60 / 120 m³/hr



TRUCK MIXER
6, 7, 8 and 10 m³



STATIONARY PUMP
20 – 100 m³/hr



MOBILE LINE PUMP
40 – 70 m³/hr



TRUCK MOUNTED PUMP
Horizontal Reach: 31.4 – 37.6 m
Vertical Reach: 35.6 – 41.6 m



TELEBELT
Horizontal Reach: 31.8 – 61 m
Vertical Reach: 16.78 – 34.70 m



GYPSUM PLASTERING
2000 - 3000 sq.ft / day
Hor: 30 m or Ver: 15 m



SAND-CEMENT PLASTERING/GROUTING
2500 - 3500 sq.ft / day
Hor: 25-70 m or Ver: 20-50 m



SHOTCRETE EQUIPMENT
4 – 30 m³/hr
Horizontal Reach: 7 - 15 m
Vertical Reach: 7.5 - 17 m

Putzmeister Concrete Machines Pvt. Ltd.

Plot No. N4, Phase 4, Verna Industrial Estate,
Salcette - Goa 403 722. INDIA

Tel.: +91 (832) 6696 000

Fax: +91 (832) 6696 300

Whatsapp: +91 91585 34123

www.putzmeister.com



For all your support needs, contact.india@putzmeister.com

Regional Offices: NORTH: 011 4200 5600, EAST: 033 6614 2525, WEST: 022 2636 0181 / 82, SOUTH: 040 4010 1015

Service Call Centre: NORTH: 99100 25721, EAST: 84200 59909, WEST: 73877 00081,
SOUTH (AP, TN): 78939 22727, SOUTH (KAR, KERALA): 90080 65829