



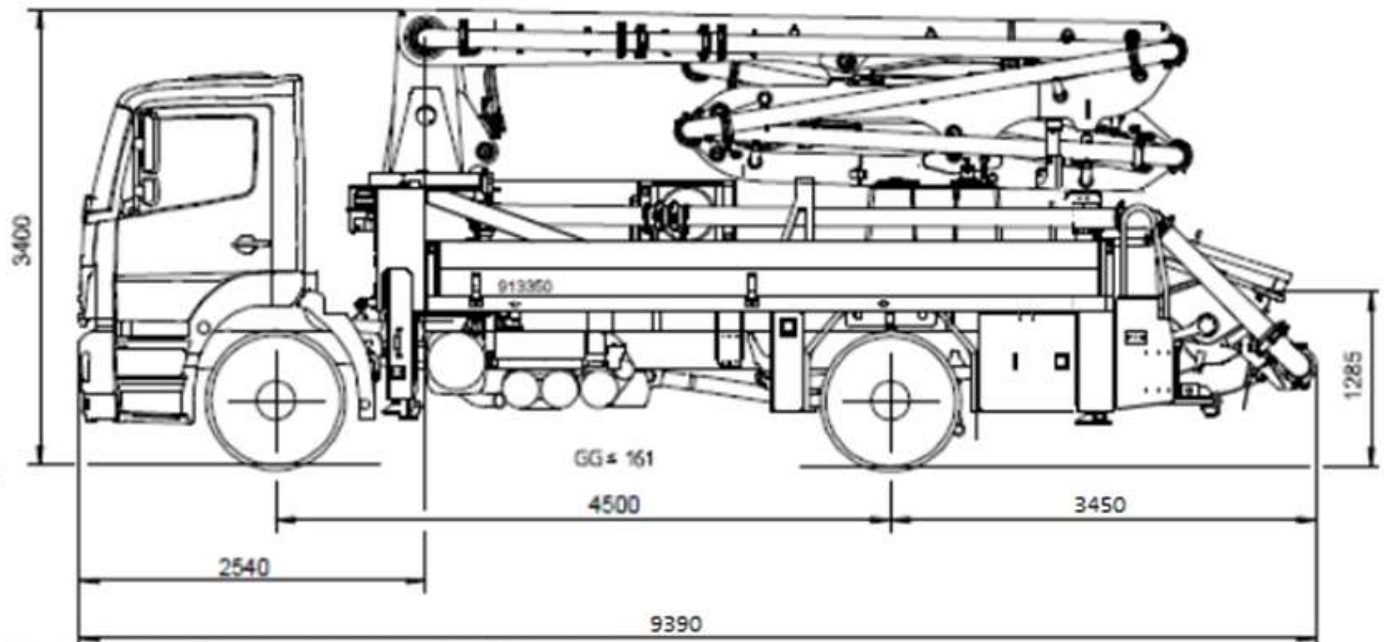
Putzmeister

Truck-mounted Concrete pump

BSF 20-4.12 H

Output up to 111 m³/h

Delivery pressure up to 85 bar



All data maximum theoretical.

Technical data for concrete pump

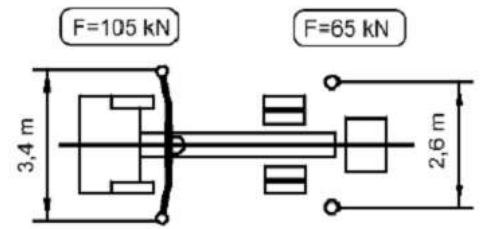
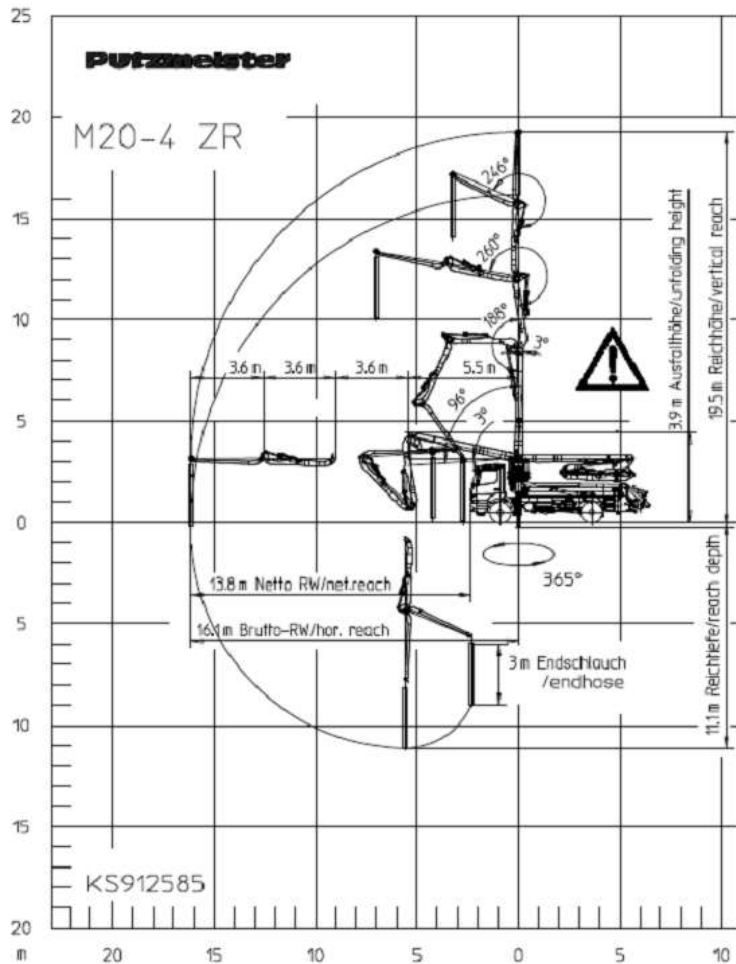
Model	BSF 20.12H
Output	111 m ³ /h
Delivery pressure	85 bar
Delivery cyl. fl	230 mm
Stroke of delivery cyl.	2100 mm
Strokes volume of delivery cyl.	
Strokes / minute	21
Hydraulic ratio	4.01
Transfer tube	S transfer tube (S 2318LS)
Hopper	RS 909 Approx. 600L
Filling height	
Control system	Free flow hydraulics (FFH - EL)

- Dimensions, weights and engine power depend on truck model.

Technical data for boom

Model	Boom M20-4
Reach height	19.5 m
Horizontal reach	16.1 m
Reach depth max.	13.8 m
Unfolding height	3.9 m
End hose length	3 m
Delivery line	DN 125/ max. 85bar
Slewing circle	365°
Number of arms	4
Folding system	ZR fold
Hydraulic control	Module boom control (MBC)
Remote control	Cable remote control
Support	Front : Rear :
	Telescoping Swinging

Reach information diagram, Support



Dimensions can differ depending on configuration.



Range in which you must not work with the end hose.

Scope of supply

Agitator safety cutout (RSA) in RFID with self-start protection

Concrete hopper RS 909 with agitator

Delivery cylinder chrome plated

End hose 3,0 m DN 125

Ergonic Graphic Display (EGD) with machine-failure-management

Ergonic Pump System (EPS) incl. Ergonic Output Control (EOC)

Flushing water pump 160 l/min 17-25 bar

Guard rail right side / grab left side

Hinged elbow with cleaning port

Horn via mushroom button at hopper

Operating manual (2xPaper), spare part list

Platform non-skid

pump on/off dependent on speed

Rear steps

Remote control with 25m cable, without display

Rubber collar at hopper

Splash guard hinged

S-transfer tube switchover normal/fast

Support plates (4 x) in magazine (2 x) open

Tool set incl. standard equipment

Towing eye

Water tank 500 L

Working light for lightening of hopper

See quotation for exact serial delivery scope.
Comprehensive range of options available on request .