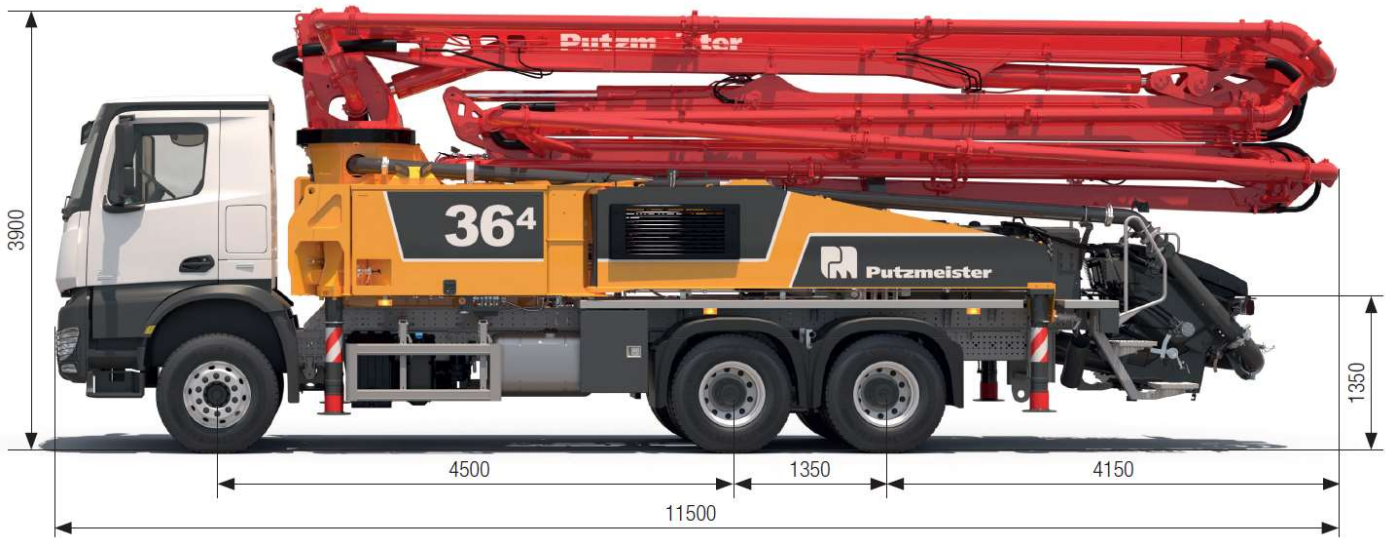


Truck-Mounted Concrete Pump

BSF 36-4

Output up to 95 m³/h
Delivery pressure up to 82 bar



Note: All data maximum theoretical.
Dimensions and weights depend on truck, pump model and equipment
Illustrations show special equipment.

Technical data for Concrete Pump

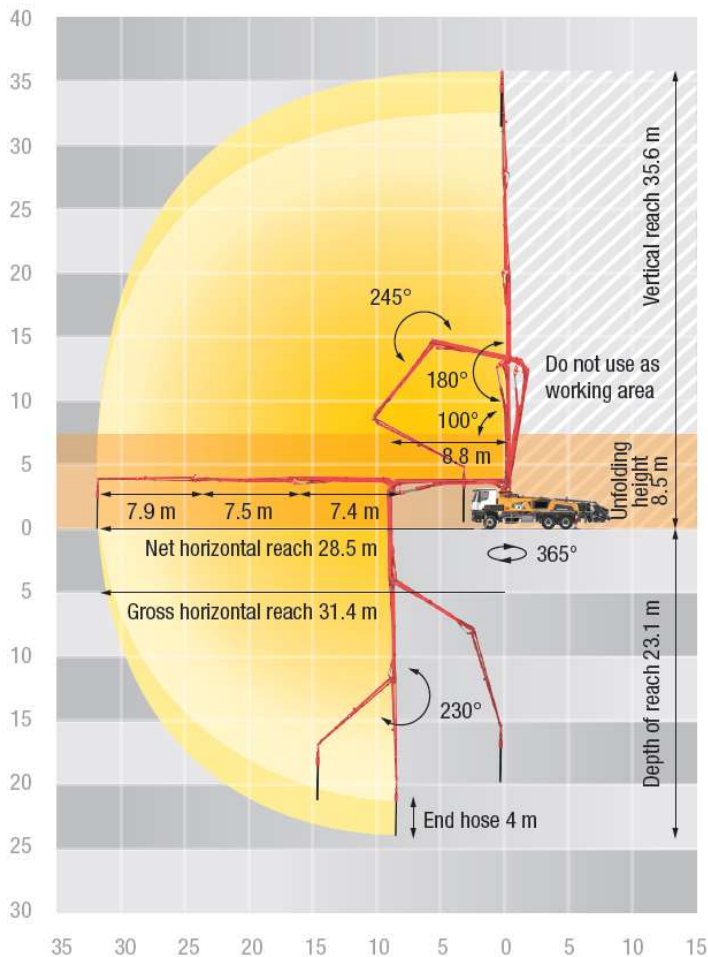
Model	BSF 36.10H	BSF 36.08H
Output	95 m ³ /h	80 m ³ /h
Delivery pressure	82 bar	70 bar
Delivery cylinder	230 mm	200 mm
Stroke of delivery cyl.	1400 mm	1400 mm
Strokes / minute	27	30
Hydraulic ratio	4.3	4.9
Transfer tube	S transfer tube (S 2318LS)	S transfer tube (S 2018LS)
Hopper	RS 909 Approx. 600L	RS 905 A Approx. 600L
Filling height	Approx. 1.35 m	Approx. 1.35 m
Control system	Free flow hydraulics (FFH - EL)	Free flow hydraulics (FFH - EL)

- All data maximum theoretical.

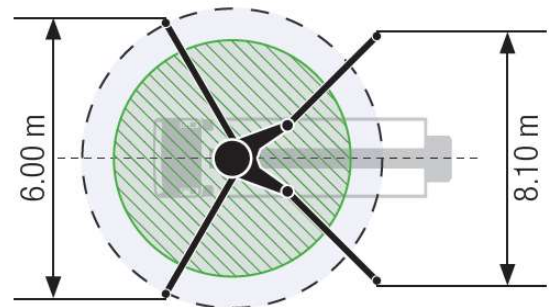
Technical data for Boom

Model	Boom M36-4
Reach height	35.6 m
Horizontal reach	31.4 m
Reach depth max.	23.1 m
Unfolding height	8.5 m
Delivery line	DN 125/ max. 85bar
Slewing circle	365°
Number of arms	4
Folding system	Z fold
Hydraulic control	Module boom control (MBC)
Remote control	Cable remote control
Support	Front : Rear :
	Telescoping, diagonally Swinging

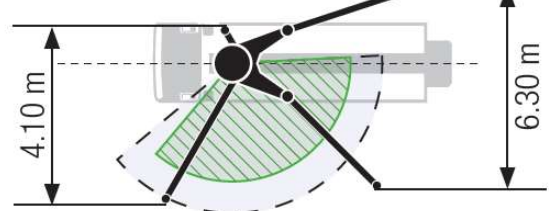
BSF 36-4 Reach information diagram, Support



Standard



OSS



Support width based on center of support leg

Scope of supply

Agitator safety cutout (RSA) in RFID with self-start protection

Concrete hopper with agitator

Delivery cylinder chrome plated

End hose 4,0 m DN 125

Ergonic Graphic Display (EGD) with machine-failure-management

Ergonic Pump System (EPS) incl. Ergonic Output Control (EOC)

Flushing water pump 160 l/min 17-25 bar

Grab Rail right/left side

Hinged elbow with cleaning port

Horn via mushroom button at hopper

Operating manual (2xPaper), spare part list

Platform non-skid

Pump on/off dependent on speed

Rear Foldable steps

Remote control with 40m cable, without display

Rubber collar at hopper

Splash guard fixed

S-transfer tube switchover normal/fast

Support Plates in holder

Tool set incl. standard equipment

Towing eye

Water tank 500 L

Working lights @ Hopper & Boom tip

Central lubrication hopper, electrically

Optional for BSF 36.10H

Radio remote control proportional with display

One Sided Support - OSS

See quotation for exact serial delivery scope.
Comprehensive range of options available on request.