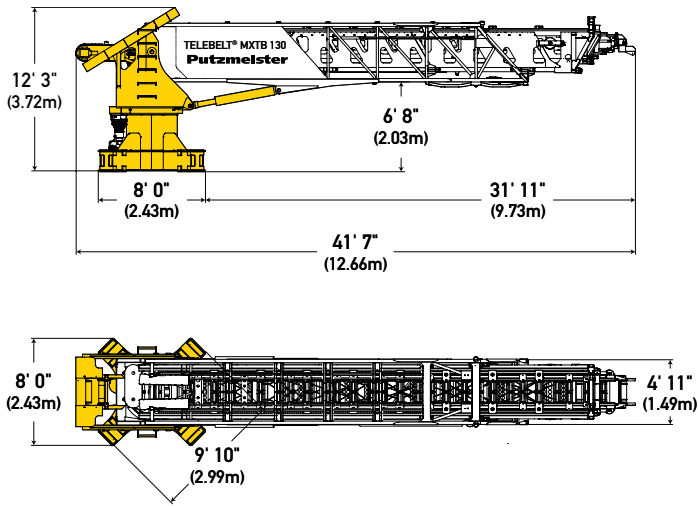




TELEBELT® MXTB 130 & MXTB 600 | PLACING CONVEYOR



MXTB 130 & MXTB 600



TELEBELT MXTB 130 & MXTB 600 SPECIFICATIONS

Conveyors	MXTB 130 5-arm		MXTB 600 4-arm	
Conveyor horizontal reach –				
Maximum at 0°	126' 6"	(38.56m)	102' 0"	(31.09m)
Maximum at 29°	110' 9"	(33.74m)	89' 3"	(27.20m)
Conveyor belt width	18"	(457mm)	24"	(610mm)
Trunk/end hose length	15' 0"	(4.57m)	15' 0"	(4.57m)
Discharge height from level –				
Maximum at 29°	68' 3"	(20.81m)	55' 0"	(16.78m)
Maximum at -15°	-25' 10"	(-7.86m)	-20' 9"	(-6.34m)
Observed capacity at 0°	6 yd ³ /min	(4.60m ³ /min)	10 yd ³ /min	(7.65m ³ /min)
Main conveyor				
Observed capacity at 20°	3.80 yd ³ /min	(2.90m ³ /min)	6.30 yd ³ /min	(4.81m ³ /min)
Main conveyor				
Rotation – hydraulic	360°		360°	

TELEBELT PLACING CONVEYOR

The innovative Putzmeister Telebelt® placing conveyor line was specially designed for large, civil projects and projects that require mass placement of large aggregates. This includes concrete, pervious concrete, roller compacted concrete (RCC), gravel, sand, wood, bark and bagged materials.

These units provide the flexibility needed as the final stage of an overland conveyor system, which conveys concrete from the batch plant or surge hoppers.

The placing conveyor lattice tower can be mounted using either freestanding or ballasted base configurations. The MXTB 130 and 600 do not detach from a truck- or trailer-mounted Telebelt unit and are ordered separately.

Lattice Tower

Section height –				
Option 1	9' 11"	(3.00m)	9' 11"	(3.00m)
Option 2	18' 8"	(5.70m)	18' 8"	(5.70m)
Section weight –				
Option 1	5,577 lbs	(2,530kg)	5,577 lbs	(2,530kg)
Option 2	7,330 lbs	(3,325kg)	7,330 lbs	(3,325kg)
Section width –				
Option 1	6' 7" x 6' 7"	(2m x 2m)	6' 7" x 6' 7"	(2m x 2m)
Option 2	6' 7" x 6' 7"	(2m x 2m)	6' 7" x 6' 7"	(2m x 2m)

Power Pack

Model	Deutz		Deutz	
EU stage/EPA	3A/Tier 3		3A/Tier 3	
Cylinder	6		6	
Fuel	Diesel		Diesel	
Displacement	1.60 gal	(6.06L)	1.60 gal	(6.06L)
Power	208 HP	(155kW)	208 HP	(155kW)

Weights*

Boom	16,800 lbs	(7,620kg)	16,800 lbs	(7,620kg)
Pedestal	13,000 lbs	(5,897kg)	13,000 lbs	(5,897kg)
Total	29,800 lbs	(13,517kg)	29,800 lbs	(13,517kg)

Maximum theoretical values listed.

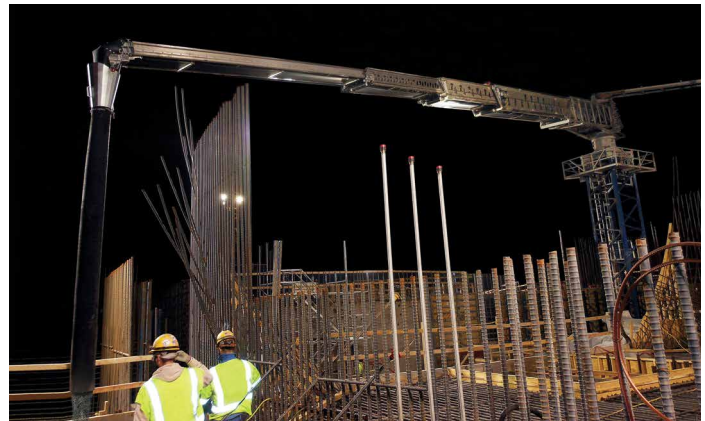
* Weights are approximate.

TELEBELT CONVEYOR ADVANTAGES

- Same, reliable boom as offered on our truck- and semi-trailer-mounted Telebelts
- 360-degree rotation
- 29-degrees up elevation
- 15-degrees down elevation

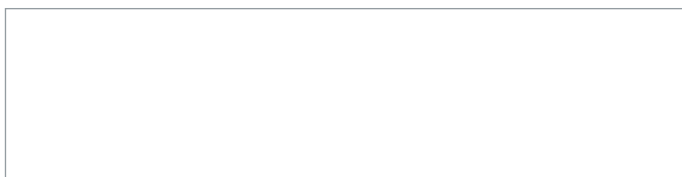
PUTZMEISTER LATTICE TOWER

- Conveyor mounts to our 6' 7" x 6' 7" (2m x 2m) pin-connect lattice tower
- Mounting options are ballasted, foundation anchors, or base plates
- Can freestand up to 80' (24m)
- Tower climbs in 9' 11" (3m) or 18' 8" (5.70m) increments
- Runs off a deisel driven hydraulic power pack
- Operated by radio remote control, also has 130' 0" (40m) cable remote control
- Features modular boom control (MBC)



Photos and drawings are for illustrative purposes only.

Authorized Distributor



Putzmeister America, Inc. Phone (262) 886-3200
 1733 90th Street Toll-free (800) 884-7210
 Sturtevant, WI 53177 USA Fax (262) 884-6338

PutzmeisterAmerica.com

telebelt@putzam.com

TB 4392 US



© Putzmeister America, Inc. 2013

Printed in the USA (1.51305)