



**Putzmeister**



# Truck-mounted concrete pumps M39 | M39 Multi

With MX quick-release system for use on tubular columns



The 2-in-1 system –  
versatile, durable, cost-saving



### The M39 – a genuine all-rounder!

The M39 has a versatile, removable MX placing boom with quick-release system. Putzmeister also offers two high-performance pumps for different primary applications. Ergonic® 2.0 precisely matches the two components to one another.

The M39 was developed to save time and money and built to last, even under the most extreme conditions.

The result?  
**Better economy, lower costs,  
greater flexibility.**



### Putzmeister promise

The name Putzmeister stands for machines that allow you to be extremely productive and more than just competitive. To that end, we provide you with exceptionally innovative technologies as well as maximum quality.

#### Premium service and genuine parts

You can count on Putzmeister. Because with our genuine parts and accessories, you can expect a constant performance and durability even under the most

challenging conditions. And also because our trained technicians are fully committed to providing you with assistance around the globe and around the clock, whenever you need it. Every Putzmeister employee is aware of the fact that your machine has an important job to do.

#### Your Putzmeister Team



# One placing boom, a host of potential applications

## 39 m, 4 arm, multi-release point – for a broad range of uses

The M39 Multi offers all the benefits of an MX boom and a truck-mounted concrete pump in one:

### Time-saving – no matter whether stationary or flexible

The innovative joint technology with the MX quick-release system ensures that the placing boom can be used even in stationary operations. At the multi-release point, the arm

package can be quickly and simply loosened from the boom frame, and then be mounted as a compact unit on tubular columns or lattice columns (adapter required).

### Z-folding mechanism for best slip characteristics

4 arms with Z-folding mechanism mean a very low unfolding height and hence optimum slip characteristics when it comes to

concreting ceilings, hall floors, foundations or walls for instance. The operator gets a very direct feedback while boom movements. The boom quickly and simply finds the correct working position with the Z-folding mechanism. The optimized kinematics maximize the horizontal and spatial operating range, no “dead space” occurs.

## Fewer operations, longer service life

Simple and safe operation due to the combined lubrication system, the machine operator doesn't have to climb on the machine. This is because the M39\* automatically lubricates the 1st placing boom cylinder and the 4-point bearing. Not only is this quicker and more cost-effective, it also extends the service life of highly-stressed components.

\* not available with the Multi

**Robust and maintenance-free components**  
+ **Electric combined lubrication**  
+ **High wear resistance**  

---

**= Maximum durability**



**ergonic<sup>®</sup>**  
inside

## Simple and safe operation

Even when things get tight, the Ergonic® 2.0 boom control ensures smooth operations. The fast response characteristics, the ingenious routing of the delivery lines and the sturdy steel structure result in precise movements.

### Even more convenience with EBC (Ergonic® Boom Control)

The fully-electronic controller with integrated vibration damping permits constant guidance of the end hose. The boom can be moved even more gently using the joystick in one-handed operation. Restricting the workspace or the chance of locking specific arm positions increases the operational reliability.

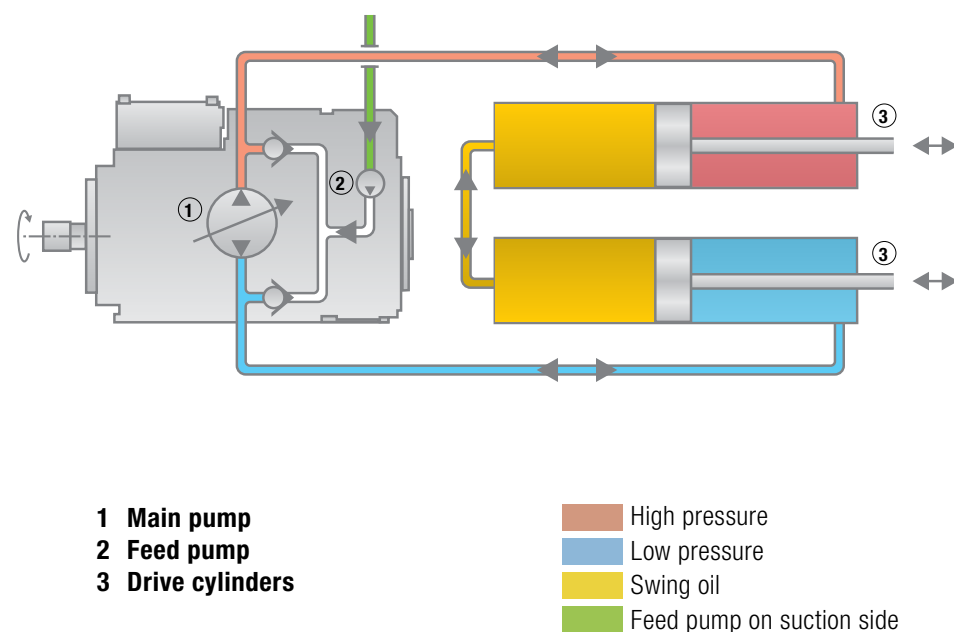
## The benefits of boom and controller at a glance

- **Vertical reach 39 m**
- **Steady, flexible 4-arm placing boom with Z-folding mechanism** with low unfolding height and optimum slip properties
- **Direct response characteristics of the boom control**
- **Standard 90° and 45° elbows** with extended collars for longer service life
- **MX quick-release points** for simple and quick mounting – versatile in stationary and flexible use on tubular columns or lattice towers
- **Ergonic® Boom Control (EBC)** for vibration damping, one-handed control and restricted workspace (optional)
- **Maximum service life for no outlay** – central grease lubrication and electric combi-lubrication for 1st placing boom cylinder and 4-point bearing
- **Safety** due to working light on the boom tip, good and safe access to mounting and operating points, integrated safety platform
- **No dead space, more flexibility**
- **Efficient operations** thanks to ergonomic and intuitive operation of the Ergonic® 2.0 controller
- **FFST display** – well-informed at all times for full control

# High performance in all areas

## Free-flow hydraulics – performance-optimised pumping

Thanks to their coordinated geometry, Putzmeister concrete pumps are designed for all common types of concrete. Among others this is owed to the closed loop free-flow hydraulics system. This drive transmits more power and saves resources, because the oil arrives at the cylinder with minimal leakage.



## Control center for maximum efficiency

If our concrete pumps are the heart of the machine, Ergonic® 2.0 is its brain. The microprocessor-supported control systems regulate the functions of the concrete pumps and the boom.

**ergonic<sup>®</sup> inside**

- EPS – Ergonic® Pump System
- EOC – Ergonic® Output Control
- EBC – Ergonic® Boom Control
- EGD-RC – Ergonic® Graphic
- Ergonic® FFS
- Display (Radio) Remote Control

## TRDI also scores with force deflection

If the machine is correctly supported, acting forces are completely deflected across the support legs, thereby reducing wear on the vehicle.

### Supports on/off camber

The telescopic support legs can be placed between obstacles in the tightest spaces. Optionally, four defined positions at the front and almost fully flexible support options for the long swivel legs at the rear offer a host of potential applications in restricted installation conditions, particularly due to the trapezoidal shape.



## High payload reserves, a lot of storage space

The M39 fulfills the DOT weight directives and, at the same time, offers a high payload reserve – ideal for job sites with an increased demand for functional liquids and attachments. The extended swivel legs and wide platform with anti-slip surface offer ample storage space.

## The pedestal - robust, rigid and dependable

Additional details in the design and construction make the sub-structure especially robust: The clamping length of the front telescopic legs and the compact, one-piece boom frame. The I-frame gives you the advantage to easily retrofit options without welding.

## Designed for economy

Maintenance-free components, the comprehensive bolting concept and numerous standard components keep your operating and maintenance costs pleasantly predictable.



## Narrow support with OSS

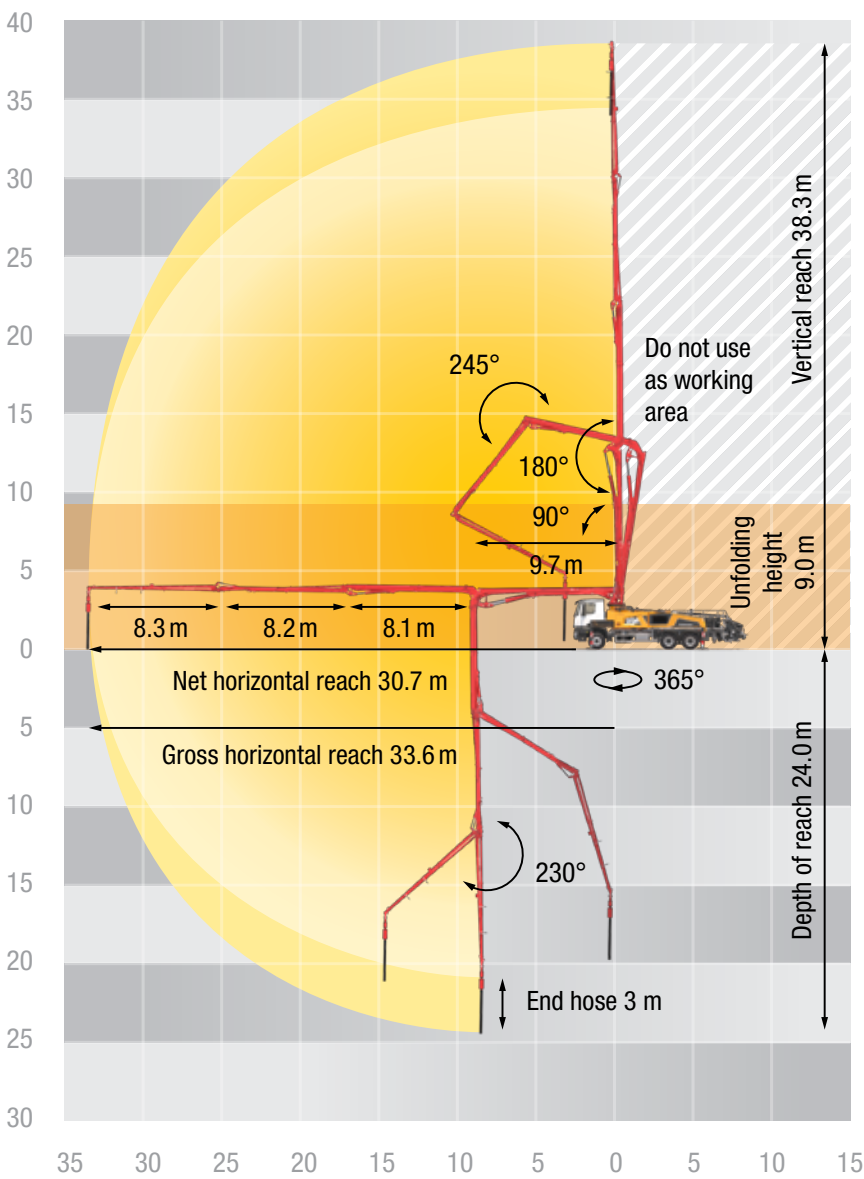
The narrow support OSS\* (One Side Support) reduces the low support width even further. A significant side effect: The net reach of the fully supported side is completely utilised.

\* OSS – assistance system for one-sided narrow support, optional.



Technical data  
M39

High-performance pumps  
for your primary applications



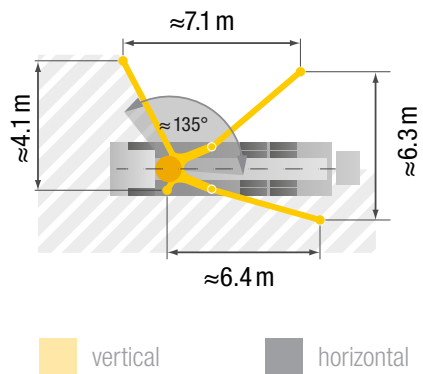
Placing boom

Folding type	4-arm, Z-folding
Vertical reach	38.3 m
Horiz. reach	33.6 m gross
Depth of reach	24.0 m
Unfolding height	9 m
End hose length	4 m
Delivery lines	DN 125, max. 85 bar
Slewing circle	365°

General

Support width	front / rear
Standard	6.0 m / 8.1 m
ESC	4.1 m / 5.6 m
OSS	4.1 m / 6.3 m
Overall length	12.5 m
Height	3.9 m

OSS



Select the power

**The 13 HPD with 130 bar / 94 m³ –** first choice when the M39 pumps at great heights in continuous operation. Extremely low wearing and is characterised by its power, robustness and durability.

**The 16 H with 85 bar / 160 m³ –** proves resilience at boom heights achieved when the arm package remains on the vehicle. Extremely powerful and efficient operation here.



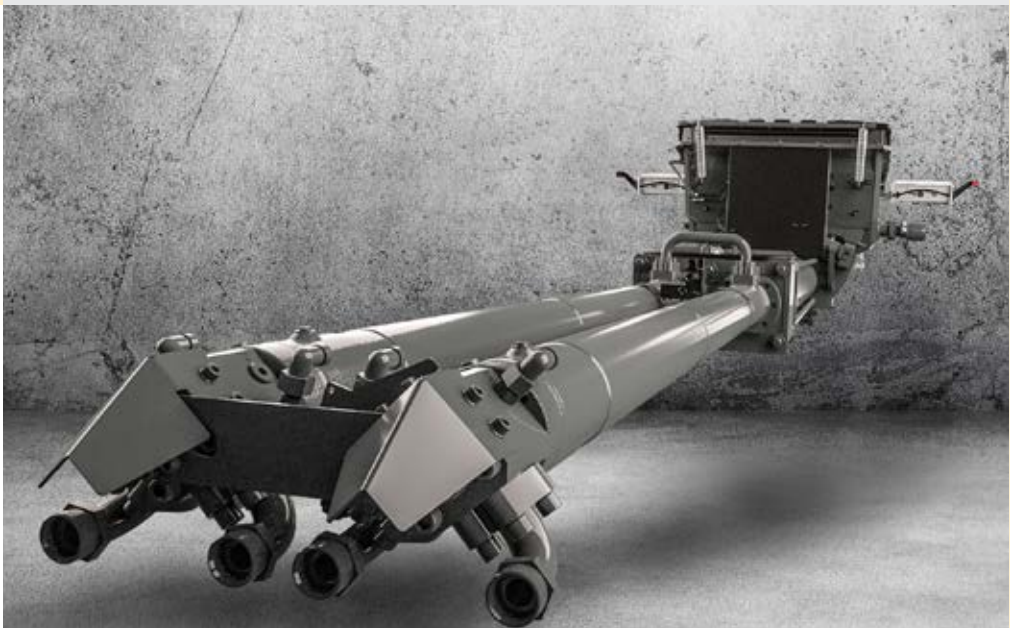
Pumps

Type	Output m³/h	Pressure bar	Stroke mm	Cylinder Ø mm	Strokes /min
13 HPD	94*	130	2 100	230	18
16 H	160*	85	2 100	230	31

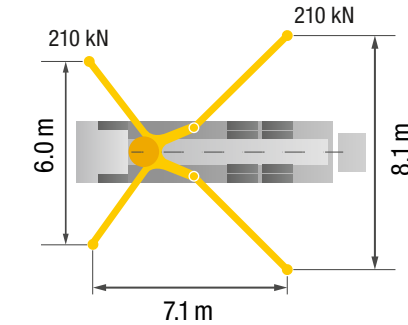
All data are theoretical maximum values.  
\* rod side/piston side. Max. delivery rates and max. delivery pressures cannot be achieved at the same time.

The benefits of the pumps  
at a glance

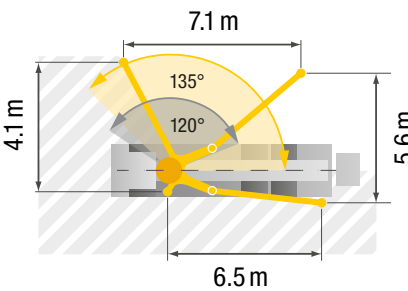
- **Two pumps to choose from:** The standard BSA and the new 13 HPD for extreme pumping
- **Pump geometry** optimally adapted to all common types of concrete
- **Service-friendly control system** with free-flow hydraulics for high quality
- **Wear-free S-valve** for long service life
- **Hopper with agitator safety shutdown** via radio frequency identification (RFID)
- **Automatic agitation** – rotational direction same as pump direction
- **Smooth, optimized pumping with EPS and EOC**, protects pump and vehicle
- **Convenient operation with Ergonic® 2.0**, the latest concept for control hardware and software from Putzmeister
- **Minimum operating costs** thanks to maintenance-free components, avoiding special components
- **Simple replacement of components through bolted concept** e. g. support cylinder
- **Optimised accessibility** to the individual components



Standard



ESC





# Build on Putzmeister – in service, parts, training

## Everything that sets service apart

Swift assistance, meaningful advice and a reliable supply of genuine Putzmeister accessories and parts – in over 120 countries worldwide. This is what we at Putzmeister understand as first-class service.

### Ideally placed to support you

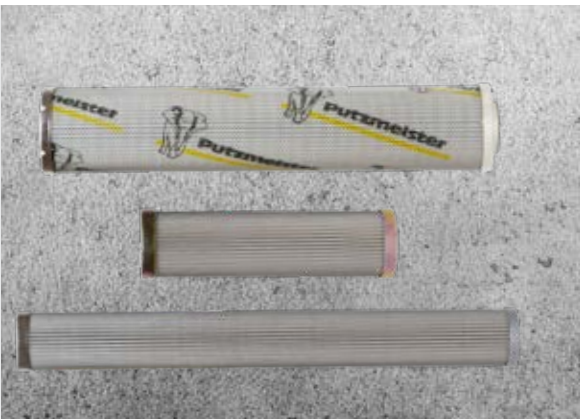
We provide continuous training for our service technicians, provide a close-knit information network and the latest equipment and consistently strive to meet our customers' needs.

Thanks to state-of-the-art technology, our employees have all the relevant technical information about your machine at their fingertips, should the need arise. Allowing us to provide you with the best possible support for emergencies, repairs or preventive maintenance.



### Genuine parts for maximum availability

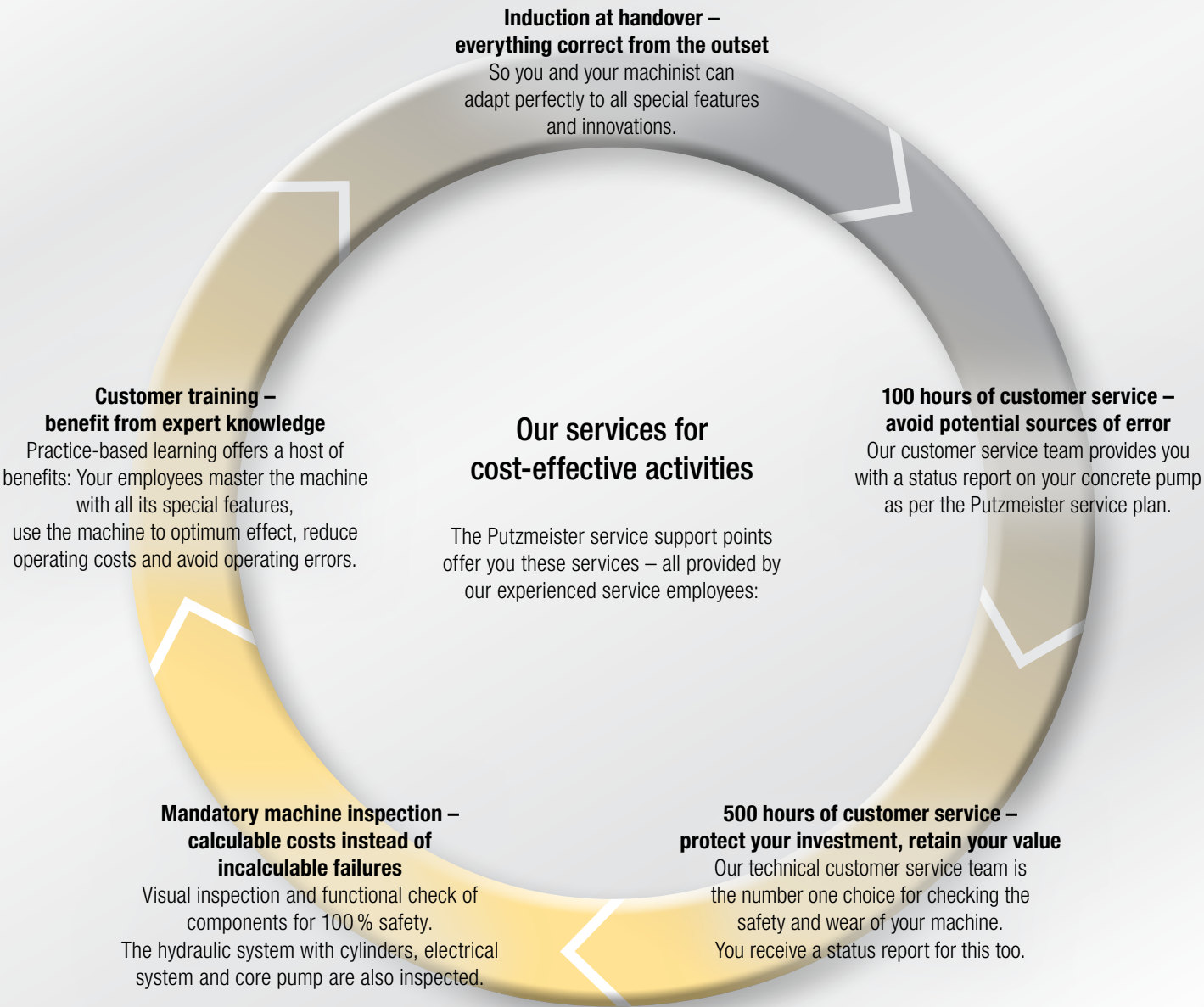
It goes without saying that we use only genuine Putzmeister parts in our workshops. This is the only way to guarantee consistent quality, checked for interoperability. And you can be absolutely sure that your machine meets the tough requirements with maximum performance and availability.



### Excellent in quality and customer proximity

In case of need, you have two options: Either the service team visits you or you take your machine to one of our service workshops. The latest tools, software analysis solutions and genuine parts ensure that your machine is operable again immediately.

All Putzmeister workshops and the workshops of our international Putzmeister partners meet our high quality standard. Especially when it comes to manufacturer's inspections and acceptance procedures in accordance with specifications.



## Our range of training courses and seminars

### For concrete pump machinists

- Training and development seminars Concrete pumps
- Training and development seminars PUMI® with piston and rotor pumps
- Regional/company seminars (in your region or on your premises)

### For concrete pumps mechanics

- Training and development seminars Concrete pumps

### For concrete pump machinists and mechanics

- Practical days in Aichtal
- Training: Handover and induction, on-the-job training

### For workshop managers and foremen

- Overview of current developments in Putzmeister concrete pumps
- Qualification at the customer workshops for requisite maintenance work

Further information can be found at: [www.pm-akademie.de](http://www.pm-akademie.de)



# The M39 at a glance

## The benefits to you at a glance

- **Versatile 2-in-1 system**  
with removable MX placing boom
- **Time-saving** thanks to MX quick-release system for flexible use on the BSF, stationary on tubular columns or lattice towers
- **Service life for no outlay**  
due to central grease lubrication and electric combi-lubrication
- **Two pumps to choose from:**  
The standard BSA and the new 13 HPD for extreme pumping
- **Powerful pumping and gentle boom movements**  
owed to Ergonic® 2.0.
- **Safety** with working spotlight
- **Weight requirement adaptable,**  
incl. high payload reserves
- **Robust and stable** thanks to reinforced substructure, compact boom stand, etc.
- **Maintenance and service-friendly**  
thanks to ideal accessibility and logical bolting concept



### Putzmeister Concrete Pumps GmbH

Max-Eyth-Straße 10 · 72631 Aichtal / Germany  
P.O. Box 2152 · 72629 Aichtal / Germany  
Tel. +49 (7127) 599-0 · Fax +49 (7127) 599-520  
pmw@pmw.de · www.putzmeister.com

