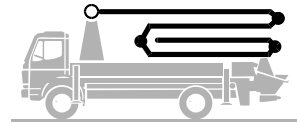


Truck-mounted concrete pump

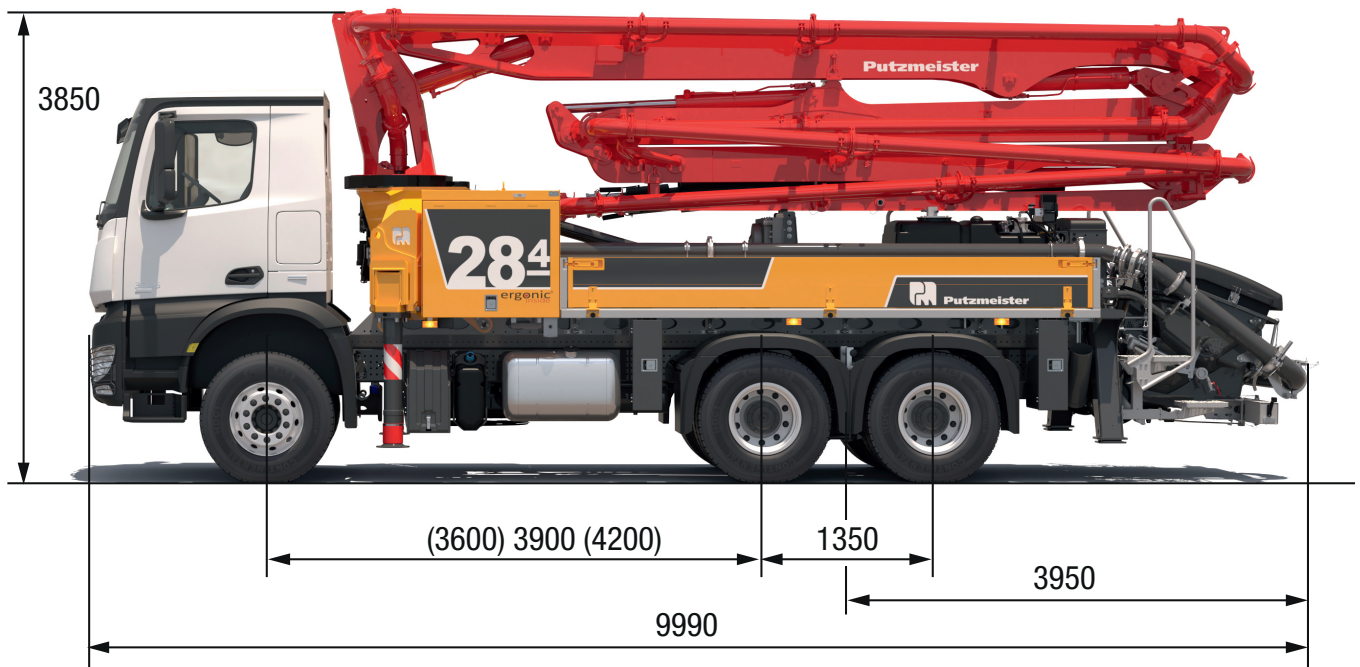
BSF 28-4.11 H

Output up to 160 m³/h
Delivery pressure up to 130 bar



.16 H
.15 i LS

ergonic[®]
inside **3**



Note: Standard version. Dimensions and weights depend on truck, pump model and equipment.
Dimensions in mm. Example based on Mercedes Benz Arocs 2636 with a 15 i LS core pump.
For illustration only.

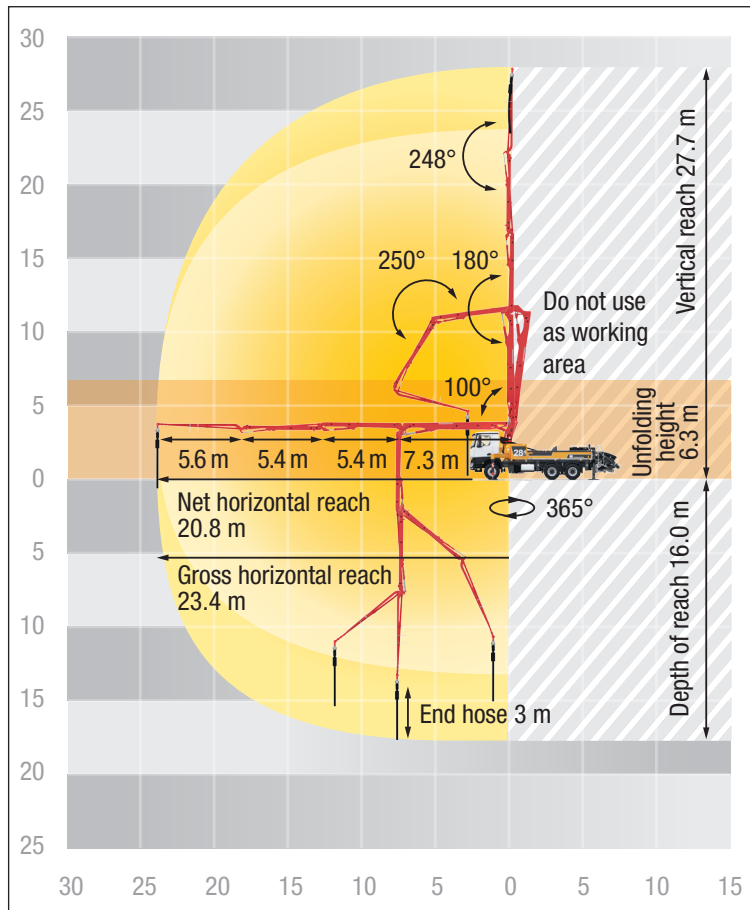
Technical data

Boom M 28-4		
Sections		4
Reach height	m	27.7
Horizontal reach	gross	m 23.4
	net	m 20.8
Reach depth max.	m	16.0
Unfolding height	m	6.3
End hose length	m	3
Folding system		Z
Delivery line		DN 125

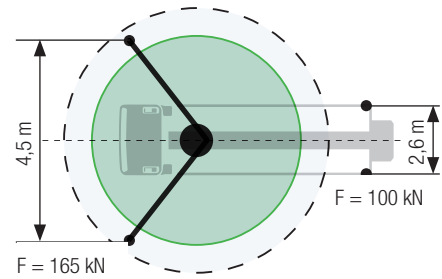
Pump		BSF	.11 H	.16 H	.15 i LS
Rod side	Output	m ³ /h	-	160	-
	Delivery pressure	bar	-	85	-
	Strokes	1/min.	-	31	-
Piston side	Output	m ³ /h	110	108	150
	Delivery pressure	bar	78	130	85
	Strokes	1/min.	32	21	24
	Delivery cylinder	Ø mm	230	230	250
	Stroke	mm	1400	2100	2100

Delivery line boom max. 85 bar. All data maximum theoretical.

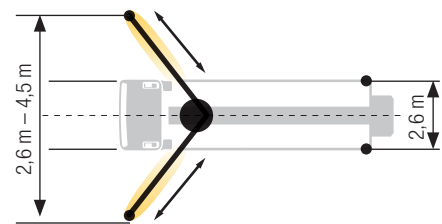
BSF 28-4 Reach information diagram, support



Standard – Full support



iSC – Full-flexible support



Dimensions can differ depending on configuration.
Support width based on center of support leg.
The specified values are reference forces.

Delivery scope standard equipment

<p>Support</p> <ul style="list-style-type: none"> Full support system Support plates (4x), in 2 magazines Swivel support plates 	<p>Cleaning</p> <ul style="list-style-type: none"> Cleaning hose 8 m+2 m incl. bracket and nozzle Connection for water tank filling, both-sided Water outlet on hopper, for small quantities (1/2") Water pump, 160 l/min 25 bar Water tank 700 l 	<p>Lighting</p> <ul style="list-style-type: none"> Control box lighting, LED Control points lighting, LED Hopper lighting, LED Light for illumination pump and water box, LED
<p>Control systems</p> <ul style="list-style-type: none"> EOC 2.0 (Ergonic Output Control) Ergonic 3 Ergonic Graphic Display 9,7" incl. Ergonic diagnosis interface Radio remote control with display 	<p>Delivery line</p> <ul style="list-style-type: none"> Deck delivery line in boom delivery line quality Delivery line (1-layer) End hose 3 m DN125 	<p>Miscellaneous</p> <ul style="list-style-type: none"> Container for sponge balls Delivery note box, plastic Operating instruction and spare parts manual (1x paper, 1x CD-ROM) Paintwork Putzmeister standard Side panel right/left foldable Tool kit
<p>Core pump / Hopper</p> <ul style="list-style-type: none"> Agitator rotation automatic, dep. on pump direction Agitator safety switch off (RFID) Central hopper lubrication, electric Hinged elbow with cleaning port Spectacle wear plate DURO 22 Splash guard fixed Steps left and right, zinc-plated Wash-out port lid with locked slide pin 	<p>Safety</p> <ul style="list-style-type: none"> Connections for hydraulic emergency supply (boom) Guard rail on pedestal Hand rail right side Mushroom button for horn, yellow Towing eye 	

See quotation for exact serial delivery scope.
Comprehensive range of options available on request.