

47Z Truck-Mounted Boom Pump

Technical specifications

A new standard of innovation and excellence

Precise engineering. Superior performance.

Everything about the new 47Z was designed with the end-user in mind. From increased maneuverability and ease of use, to a brand-new, state-of-the-art remote control system, the redesigned 47Z-Meter redefines innovative engineering. Weighing less than 32 tons, the 47Z is one of the lightest in its class and provides an incredible payload reserve. The flexibility of the 5-arm boom and 4-axle chassis makes setting up the jobsite a breeze. The new machines are also setting new standards in cost-effectiveness, dramatically reducing operating costs throughout the entire life cycle.



Free flow hydraulics in a closed loop system

- Changes in material pressure in the delivery line are reduced to ensure smooth pumping and a consistent concrete flow.
- The intelligent design minimizes wear-inducing pressure peaks, increases service life, and makes our pumps extremely powerful.
- Rapid change-over of the stroke means higher outputs, a smoother flow of concrete, and less boom bounce.
- There is greater pump output due to the efficient use of all available energy.

Other benefits at a glance

Boom

- 5-section Multi-Z boom design with 151' 3" (46.10 m) vertical reach
- Equipped with 5" (125 mm) pipe on all boom sections for efficient concrete delivery

Pedestal

- Fully integrated pedestal design absorbs all forces
- Rotation bearing and access openings simplify turret pipe changes
- Low weight offers high payload capacity
- Two spacious decks for convenient pipe and hose storage

Pump

- Engineered for all common concrete types
- Free flow hydraulic system for smooth, controllable pumping
- Fully adjustable volume control for very slow pumping with full concrete pressure and boom speed
- Low hopper height allows easy discharge from a mixer truck

Outriggers

- Quick setup on restrictive job sites
- One-sided support (OSS) outrigger system featuring a 135° working range

Putzmeister

PRO-VANTAGE®
WARRANTY PLAN

The PRO-VANTAGE® Warranty Plan extends the coverage on all Putzmeister BSF boom pumps for a total of 36 months or 6,600 hours at no extra charge. Domestic only.

Features & options

Reduced operating costs

The Putzmeister 47Z-Meter Truck-Mounted Concrete Boom Pump offers a variety of features to reduce overall operational costs, including efficient free-flow hydraulics and an Ergonomic operational system, standardized and maintenance-free parts, and a reduced amount of functional fluids. The 47Z also uses fewer specialty components and offers a longer wear of boom pipeline, further reducing costs.

One-Sided Support (OSS) System

For enhanced job site versatility, Putzmeister's unique OSS system allows the operator to reduce the outrigger extension on one side of the unit to create a smaller overall machine footprint. Utilizing a series of sensors, OSS enables the unit to maintain a defined and safe 135° working envelope on space restrictive sites that demand a larger boom.



RS 909 Hopper features

- Hinged splash guard
- Automatic lubrication
- Hopper work light
- Hard-faced S-Valve
- Gradual 9" to 7" (230mm to 180 mm) reduction
- Thick-walled valve construction
- Fast and easy clean out
- 406 psi (28 bar) hydraulic water pump
- Wash out kit and hose
- 40 gallon (145 L) pedestal water tank, 153 gallon (580 L) outrigger water tank

RS 909 Hopper

Putzmeister's robust, yet lightweight EZ Clean Out RS 909 hopper is engineered for performance and durability, and is ideal for high pressure applications and harsh mixes. Offering 19.4 ft³ (550 L) capacity, the hopper uses one remixer paddle motor and grate-mounted vibrator. An innovative RFID safety switch in the hopper disables the machine when the grate is opened.

Standard features

Concrete Pump Unit

- Free flow hydraulics
- Multi-piece piston cups
- S-Valve - 2318 hard-faced (9" to 7")
- RS 909 clean out hopper w/ solid polyurethane fold down back splash
- Hardox remixer paddles
- Hopper vibrator
- Hopper agitator safety shutdown via Radio Frequency Identification (RFID)
- Hard-chromed material cylinders
- Proximity switches w/ indicator
- Hydraulic outriggers - front & rear
- Snap-locks for outriggers & bubble level indicators
- 406 psi (28 bar) high pressure water pump
- 185 gal (700L) composite water tank
- Auto-lube grease system - hopper / pedestal
- Centralized lube locations
- Gauge Port Central (GPC)
- Loading decks for pipe & accessories
- Modular bolt-on flatpack
- Large side-mounted aluminum toolboxes
- Swing out step (left side)
- Operator Supervision Warning System (OSWS)
- 5" delivery line on boom & deck pipe
- Proline 3000 Putzmeister Pipe Technology (PPT) w/ 10 ft (3m) delivery hose w/ coupling
- Electric oil cooler
- Wash out kit & hose
- Light kit package at boom, pedestal, & hopper
- One-Sided Support (OSS) Outriggers
- 4 outrigger pads w/ 2 side compartments
- Wireless & cable remote

Unit Control System

- Ergonic 3.0 w/ Ergonic Output Control (EOC)
- Standard world pattern
- Radio remote w/ Ergonic Graphic Display Remote Control (EGD-RC) w/ full proportionality & 20m cable back-up option
- Ergonic Graphic Display in control cabinet
- Cable remote w/ full proportionality
- Remote on/off of concrete pump & remote engine off

Miscellaneous

- Ship-away kit w/ basic maintenance tools
- Operational & safety manuals
- High quality paint finish

iSA - intelligent Setup Assistance

Our most supportive system ever – iSA (intelligent Setup Assistant)

Putzmeister is revolutionizing concrete pump set-up assistance with the new iSA (intelligent Setup Assistant). The successor to the proven OSS system offers a significant improvement with machine reach and flexibility, and is kept simple by allowing the operator to turn iSA on and off with a single switch.

MAXIMUM VERSITILITY, REACH, AND ASSISTANCE

intelligent Setup Assistant

More flexibility than ever before

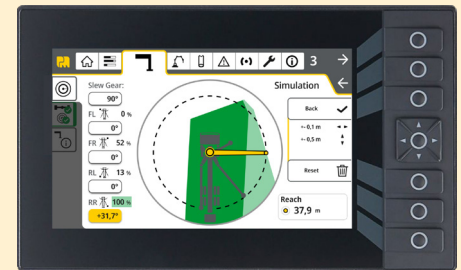
- **Maximum versatility** Optimum support options for the most difficult site conditions.
- **Maximum reach** The reliable reach prediction allows machine operators to utilize the robust structure of Putzmeister machines to their fullest potential.
- **Maximum assistance** Automatic stopping of the boom when the operator reaches the reach limit will keep the machine in stable conditions.

COMING WINTER 2024

The new FLEX base structure

The combination of iSA and the optimized steel geometry enables a new level of flexibility. With the Putzmeister FLEX base structures, supporting and setting up the machines is easier and more flexible than ever before – and incredibly straightforward for machine operators.

Clearly structured figures in real time, intuitive operation, and a radio remote control make setting up on site quick and easy.



Other Available Options

Auto Lube System - Boom & Pedestal

High pressure washer (2000 psi / 138 bar)

Hopper step (right hand side) hinged

Oil tank heater

Partial Flow Filter / Dehydrator

Squeeze valve air line installation

Squeeze valve installation w/ PM EQV part

Wash-out hose reel kit

Water tank heater

iLS pump – highlights

The Putzmeister iLS pump generation is setting standards across the board

The heart of every truck-mounted concrete pump is the pump itself. The iLS pump generation delivers significantly improved data across the board and is the logical advancement of the tried and proven HLS generation.

Special features

- Fuel savings of up to 25%
- 3% increased efficiency with leak prevention
- 10% better suction resulting from the elimination of constrictions in the concrete flow
- Optimized drive unit
- Optimized conveying unit – ideal for the heaviest concretes
- Reduced wear for long service life
- Optimized accessibility for maintenance and service
- Automatic stroke correction without pump interruption
- Field-tested and robust
- Reduced noise

Hopper

The hopper has a user-friendly and low-maintenance ergonomic design. It is RFID protected, the grill is welded, and the hopper cover can be locked in 4 positions.

Lubrication system

The grease cycles have been adapted to better protect all concrete bearings from wear.

Concrete cylinder

Eliminating the constriction before the S transfer tube has resulted in calmer pump behavior and improved efficiency. On longer sections, the reduction from 250 mm to 180 mm occurs only in the S transfer tube.

Drive cylinder

Hydraulic circuits further relieved through automatic stroke compensation and the elimination of pressure peaks in the end bearings.

Seals

Designed for maximum reliability for outstanding system performance.

S transfer tube swivel bearing

The hopper wall thickness and bearing surface have been doubled for maximum reliability.

S transfer tube

The hardened valve operates smoothly and guarantees extreme durability.

LONGER SERVICE LIFE
LOW MAINTENANCE
OPTIMIZED EFFICIENCY
OPTIMIZED ACCESSIBILITY
EASY CLEANING
BEST PERFORMANCE!

Ergonic® 3 – highlights

The new Ergonic® 3 – clear, fast, and safe

- **Continuous operating concept** for all Putzmeister products with the same functions and displays – whether on the radio remote control or the Ergonic Graphic Display (EGD).
- **Intuitive work and quick reactions** thanks to a clear menu structure and intuitively arranged functions.
- **Full overview** of machine status on the radio remote control and EGD (incl. valves, sensors, and LEDs on fuses).
- **Detailed fault management:** Faults are easy to detect and rectify – even without a Putzmeister technician.
- **Multi-level emergency operation** keeps the machine running even in the toughest conditions.

**AS EASY TO OPERATE
AND MORE INTUITIVE
THAN EVER BEFORE**

ERGONIC® 3



Pumping made smart

If our concrete pumps are the heart of Putzmeister machines, then the Ergonic system is the brain.

As a switching center, the microprocessor-supported control systems regulate the functions of concrete pumps and placing booms.

Always by your side – Ergonic® 3 inside

EPS Ergonic Pump System

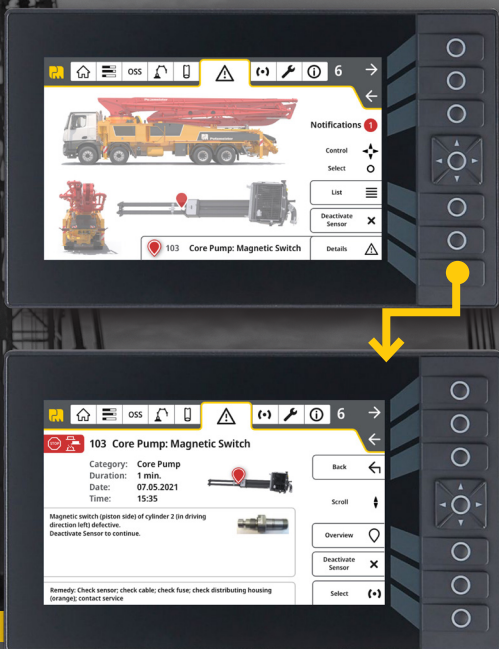
Takes control of the concrete pump for optimized pumping.

EOC Ergonic Output Control

Regulates the optimum motor speed for smooth operation with fuel efficiency and low wear.

Ready for the future

- **A future-oriented solution** with interfaces for future expansions and easy software updates.
- **Service-friendly concept** with services that can be accessed and implemented efficiently.
- **Clearly guided fault management** on the radio remote control and display.



The best of two worlds

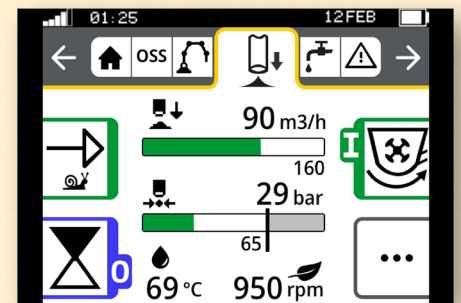
Ergonic[®] 3 is the logical evolution of Ergonic[®] 1 and Ergonic[®] 2.

Proven features are maintained, others developed further, and new and future-oriented functions are integrated.

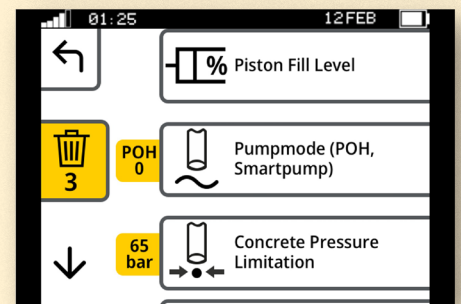
- Experienced Putzmeister customers quickly become familiar with operation, making the switch incredibly easy.
- New customers will need little training or instructions since operation is so intuitive.
- Once learned, a wide variety of machine models can be operated.

Keeping an overview in every situation

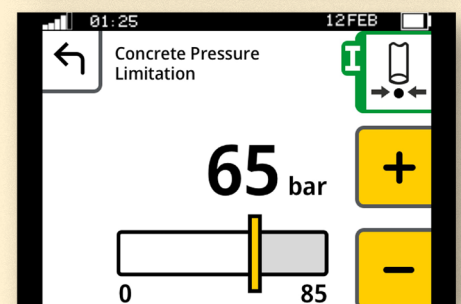
- The static menu bar guides users through the available functions.
- Neatly and intuitively arranged functions.
- Simple menu structure with a maximum of two submenu levels.
- Main menu with all standard functions and additional details in submenus.



Main menu



Submenu level 1



Submenu level 2

SIMPLE OPERATION

Easy and intuitive, for all machine operators.

RELIABLE OPERATION

With a comprehensive fault management.

DETAILED FAULT MANAGEMENT

Comprehensive fault messages with suggested solutions.

You can rely on Putzmeister – service, parts, and training

Everything that sets service apart

Putzmeister provides first class service with swift assistance, meaningful advice, and a reliable supply of genuine Putzmeister parts and accessories in over 120 countries.

Ideally placed to support you

We continuously train our service technicians, provide a close-knit information network, and the latest equipment to consistently strive to meet our customers' needs.

Our employees have all the relevant technical information about your machine at their fingertips, allowing us to provide you with the best possible support for emergencies, repairs, or preventive maintenance.



Our services for cost-effective work

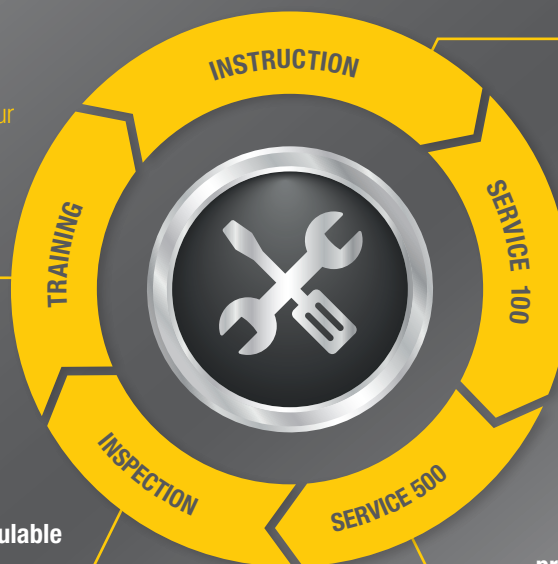
The Putzmeister service support points offer you these services - all provided by our experienced service staff:

Customer training – benefit from expert knowledge

Practice-oriented learning offers many benefits: Master the machine and all of its special features, use the machine to optimum effect, reduce operating costs, and avoid operating errors.

Mandatory machine inspection – calculable costs instead of incalculable failures

Visual inspection and functional check of components for 100% safety. The hydraulic system with cylinders, electrical system, and core pump are also inspected.



Introduction at handover – everything correct from the get-go

You and your team can adapt perfectly to all features and innovations.

100 hours of customer service – avoid potential sources of error

Receive a status report on your concrete pump per the Putzmeister service plan.

500 hours of customer service – protect your investment, retain your value

Our technical customer service team is the number one choice for checking the safety and wear of your machine.

Putzmeister Academy - Service Schools

We want to make sure you get the most from your Putzmeister equipment. To maximize the use and profitability of your investment, take advantage of the regular training seminars at our Wisconsin headquarters.



Service Schools cover maintenance, operation, and inspection of boom pumps, Telebelts, and Thom-Katts. They include hands-on training, problem-solving exercises, hands-on presentations, and safety training.

Genuine parts for maximum availability

We use only genuine Putzmeister parts in our workshops to guarantee consistent quality. You can be sure that your machine meets the tough requirements with maximum performance and availability.

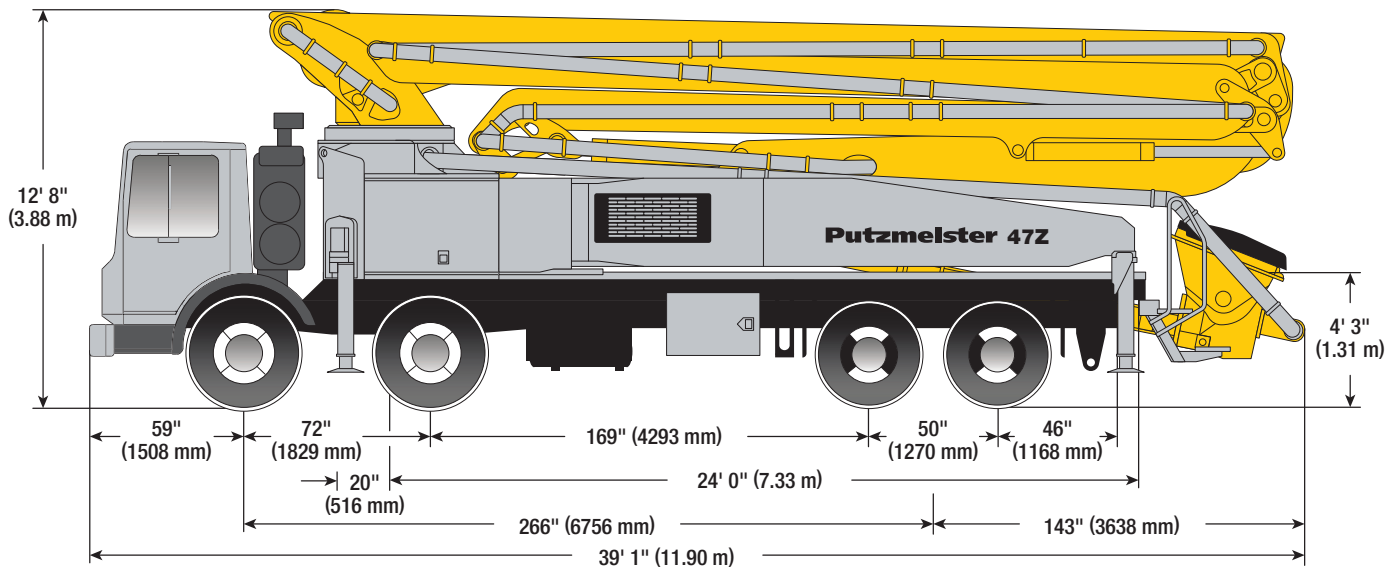
- Immediate availability worldwide through our extensive dealer network
- Longest possible service life and maximum reliability
- Minimal maintenance and repair work thanks to high-quality materials and tested quality
- Quick and easy replacement with precise fitting and no variations in quality
- Safety for your customers, your personnel, and your investment

Product and training information — whenever, wherever

We consistently provide the most up-to-date product and training information through our YouTube channel. From the comfort of your own home to on the jobsite, you have access to hundreds of videos that showcase the latest and greatest Putzmeister products, how-to videos, demonstrations, and much more.



47Z-Meter Truck-Mounted Specifications

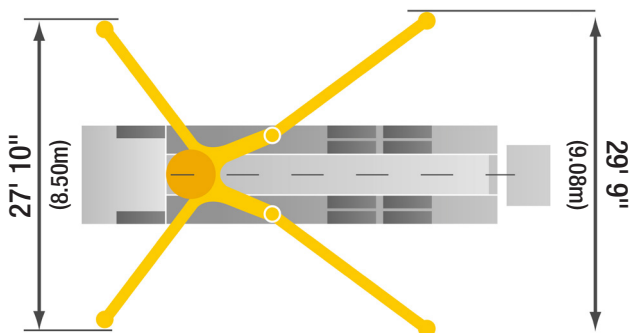


Machine Dimensions	Imperial	Metric
Length	39' 1"	11.90 m
Width	8' 2"	2.50 m
Height	12' 8"	3.87 m
Outrigger spread L - R — front	27' 11"	8.50 m
hydraulically extended out & down		
Outrigger spread L - R — rear	29' 9"	9.08 m
hydraulically swing out & extend down		
Wheelbase	266"	6,756 mm

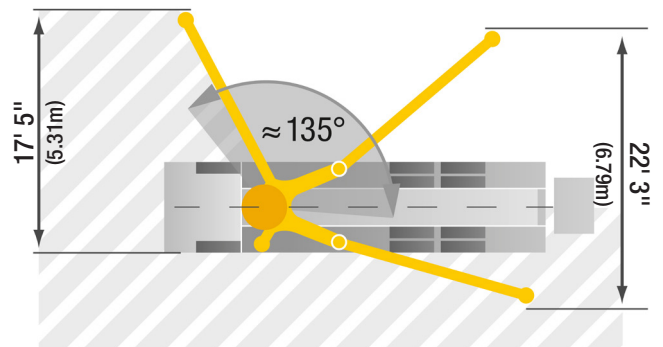
Weight	Imperial	Metric
Front axle weight	32,831 lbs	14,892 kg
Rear axle weight	37,289 lbs	16,914 kg
Approximate total weight	70,120 lbs	31,806 kg

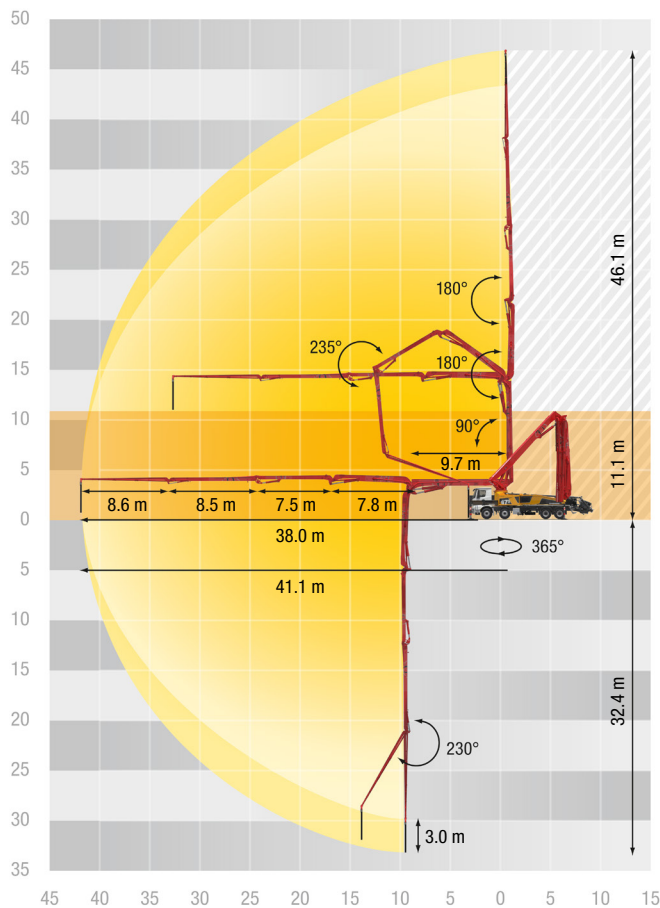
Based on Model MACK MRU 613 with .16H pump cell. Dimensions will vary with different truck makes, models, and specifications. Weights are approximate and include pump, boom, truck, driver and full fuel tank. Varies with options selected.

Standard



OSS





Boom Multi-Z Design	Imperial	Metric
Height & Reach		
Vertical reach	151' 3"	46.10 m
Horizontal reach	134' 11"	41.10 m
Reach from front of truck*	124' 8"	38.00 m
Reach depth	106' 4"	32.40 m
Unfolding height	36' 5"	11.10 m

5-Section Boom

1st section articulation	90°	
2nd section articulation	180°	
3rd section articulation	180°	
4th section articulation	235°	
5th section articulation	230°	
1st section length	31' 10"	9.70 m
2nd section length	25' 7"	7.80 m
3rd section length	24' 7"	7.49 m
4th section length	27' 11"	8.50 m
5th section length	28' 3"	8.60 m

General Specifications	Imperial	Metric
Pipeline Size (ID) metric ends	5"	125 mm
Rotation	365°	
End hose — length	10' 0"	3.00 m
End hose — diameter	5"	125 mm

Pump	47Z.16 H		47Z.17 ILS	
	Imperial	Metric	Imperial	Metric
Output — rod side	210 yd ³ /hr	160 m ³ /hr	—	—
— piston side	141 yd ³ /hr	108 m ³ /hr	222 yd ³ /hr	170 m ³ /hr
Pressure — rod side	1,233 psi	85 bar	—	—
— piston side	1,885 psi •	130 bar •	1,233 psi	85 bar
Material cylinder diameter	9"	230 mm	10"	250 mm
Stroke length	83"	2,100 mm	83"	2,100 mm
Maximum strokes per minute				
— rod side		31		—
— piston side		21		27
Volume control		0-Full		0-Full
Vibrator		Standard		Standard
Hard-chromed material cylinders		Standard		Standard
Hydraulic system		Free Flow		Free Flow
Hydraulic system pressure	5,075 psi	350 bar	5,075 psi	350 bar
Differential cylinder diameter	5.5"	140 mm	4.5"	115 mm
Rod diameter	3.1"	80 mm	3.1"	80 mm
Maximum size aggregate	2.5"	63 mm	2.5"	63 mm
Water tank — pedestal	211 gal	800 L	211 gal	800 L

Maximum theoretical values listed. * Applies to units mounted on PMA stock truck — MACK MRU 613 • Standard delivery line system rated at max line pressure of 1,233 psi (85 bar)

Here for you every step of the way

Our Putzmeister Promise

We build machines that increase your production and give you a competitive edge – and these machines are continuously developed. Innovative technologies and durable quality need to adapt to your ever-changing daily challenges. Our products stand for optimum output with low fuel consumption, wear, and costs.

Our customers will always have a thinking, intelligent partner in all their undertakings; a partner that will deliver to their exact requirements regardless of the complexity of the task or the remoteness of the scale. With knowledge and understanding backed by experience, we approach every task with renewed enthusiasm – be it a small scale construction or a mass assignment, tight deadlines, or unique concreting and manufacturing needs.

Your Putzmeister Team



Authorized Distributor © Putzmeister America, Inc. 2023. CT 4654-2 US. Photos and drawings are for illustrative purposes only.



Putzmeister

Putzmeister America, Inc.
1733 90th Street
Sturtevant, WI 53177 USA
Putzmeister.com

Phone (262) 886-3200
Toll-free (800) 884-7210
Fax (262) 884-6338
pmr@putzmeister.com